

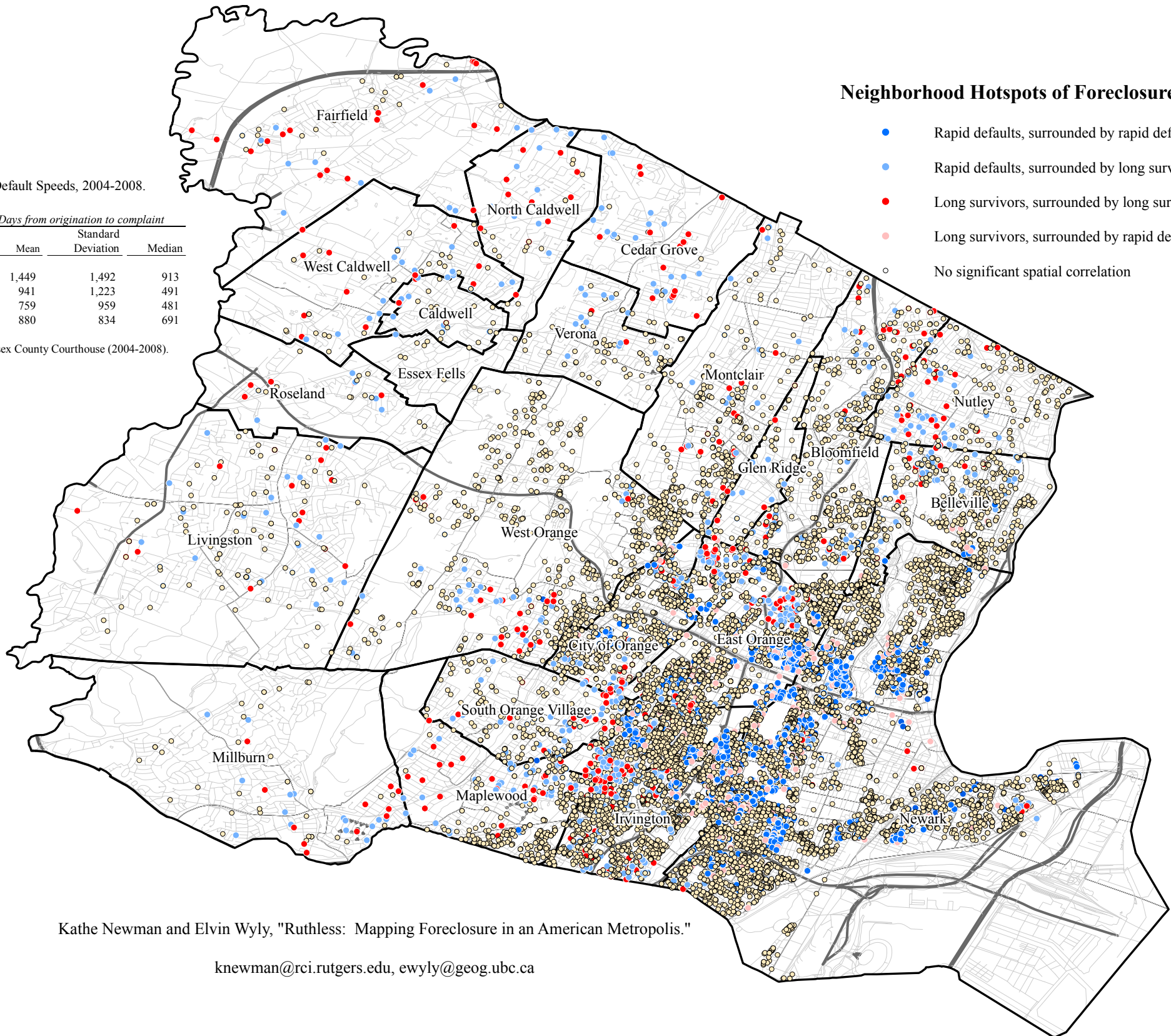
Neighborhood Hotspots of Foreclosure Speeds

Table 1. Default Speeds, 2004-2008.

	Number	<i>Days from origination to complaint</i>		
		Mean	Standard Deviation	Median
2004	2,173	1,449	1,492	913
2006	2,807	941	1,223	491
2007	4,362	759	959	481
2008	5,689	880	834	691

Data Source: Essex County Courthouse (2004-2008).

- Rapid defaults, surrounded by rapid defaults
- Rapid defaults, surrounded by long survivors
- Long survivors, surrounded by long survivors
- Long survivors, surrounded by rapid defaults
- No significant spatial correlation



Kathe Newman and Elvin Wyly, "Ruthless: Mapping Foreclosure in an American Metropolis."

knewman@rci.rutgers.edu, ewyly@geog.ubc.ca