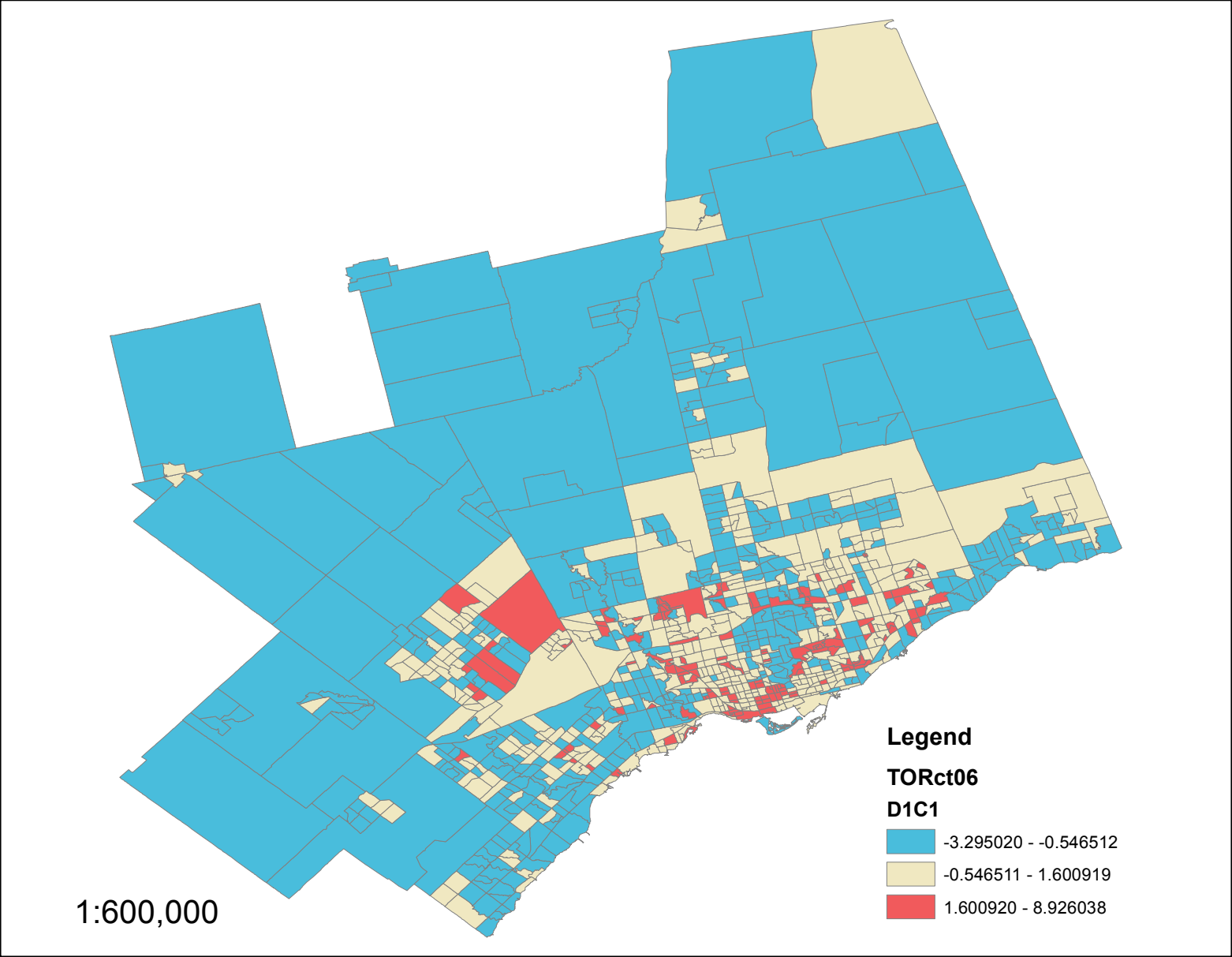
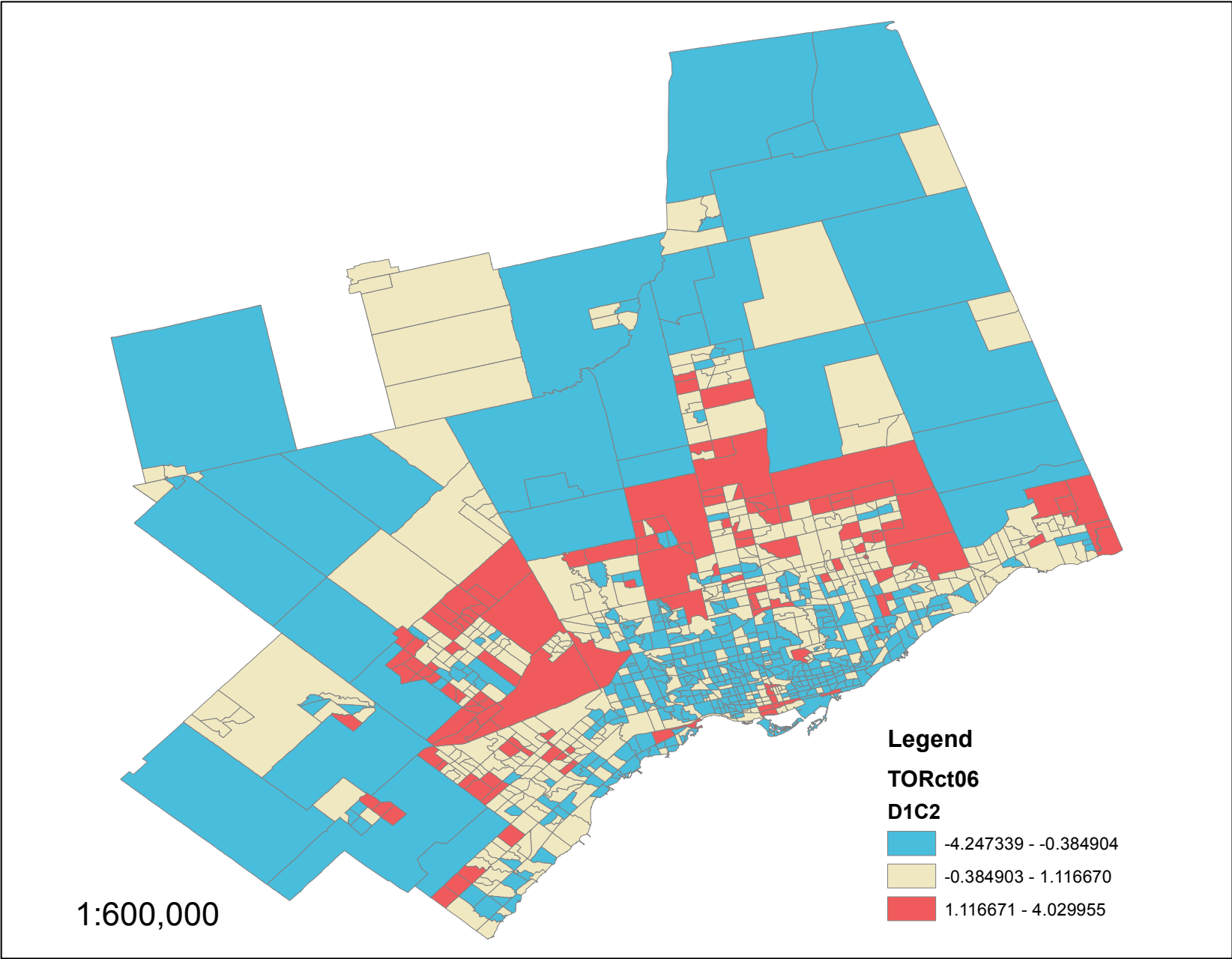


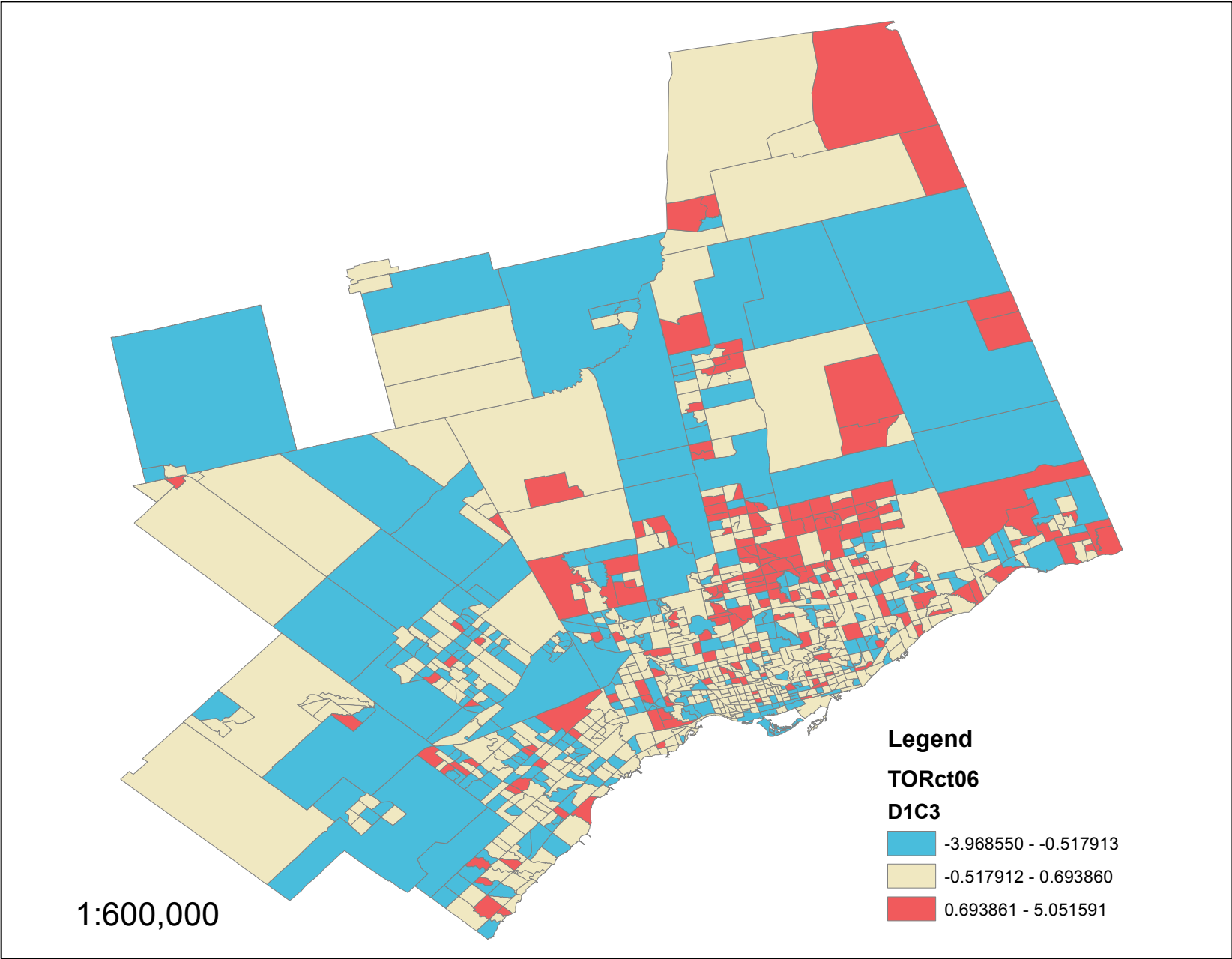
**D1C1: Many persons per bedroom (crowding), few owners, yet the relatively few owners are paying a large percentage of their income towards homeownership costs. In need of major repair. Core housing need (mostly renters). Highly mobile.**



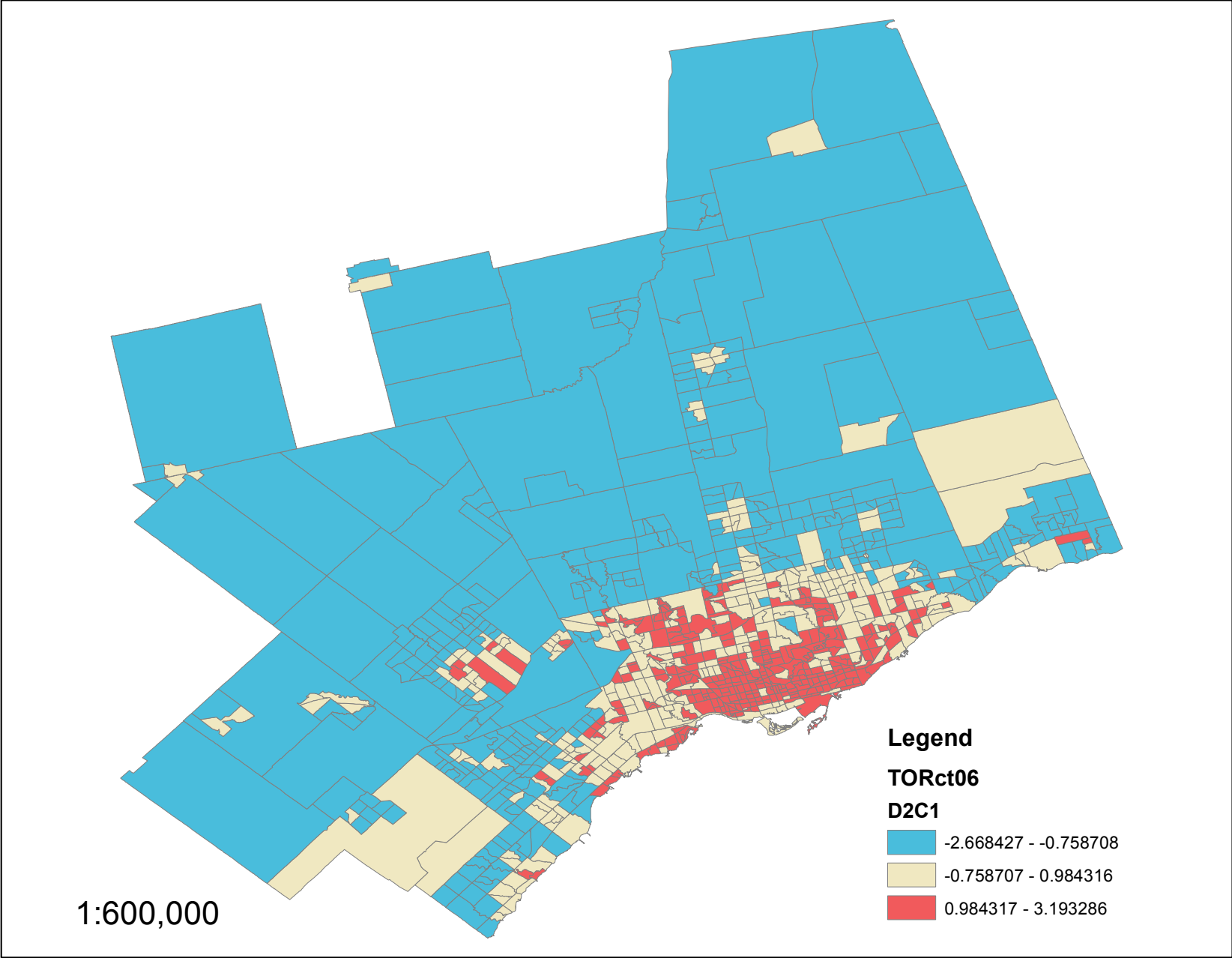
D1C2: Tenants paying more than 30% of their income on housing costs. No maintenance needed.



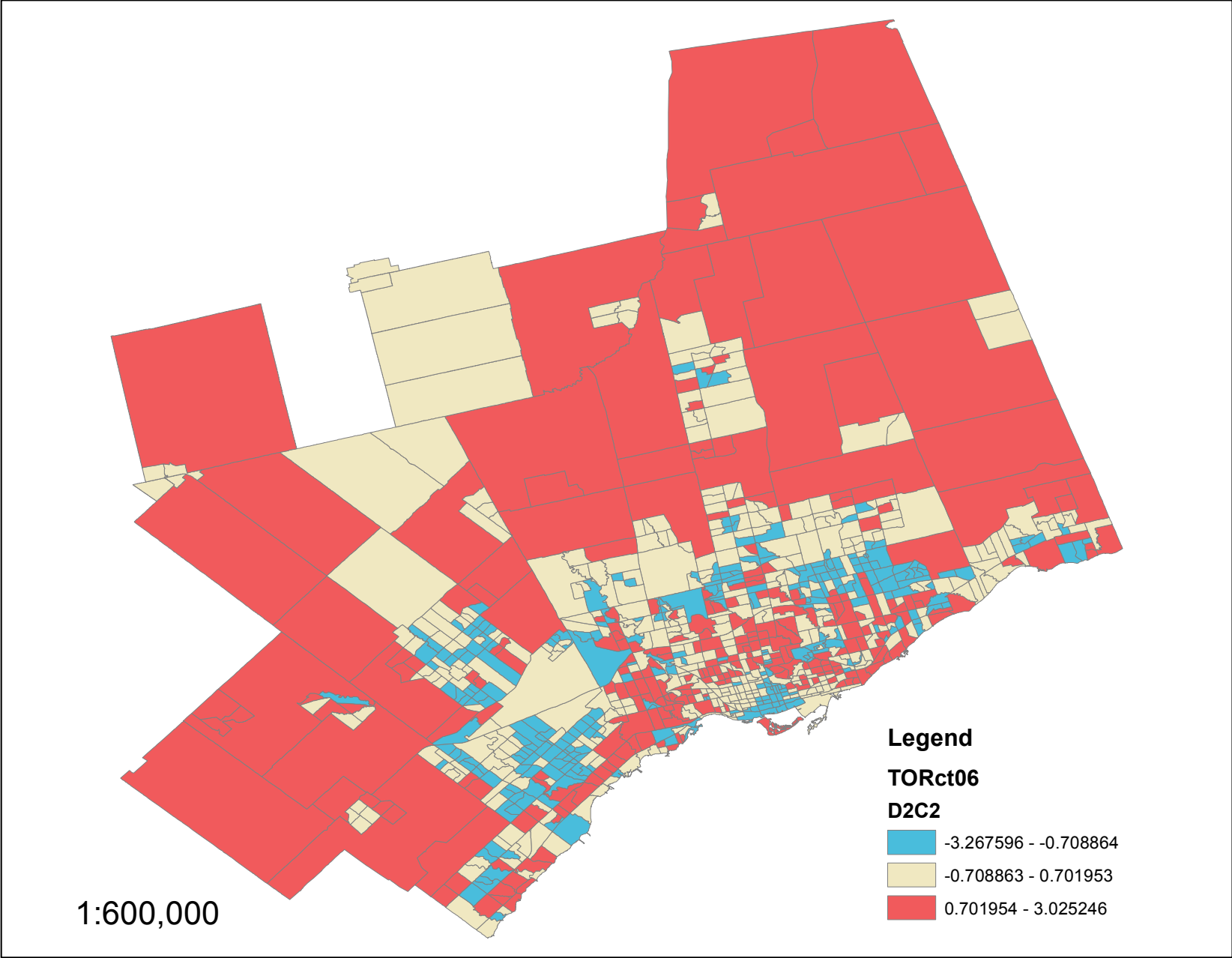
D1C3: Homeowners, paying more than 30% of income on housing, highly mobile.



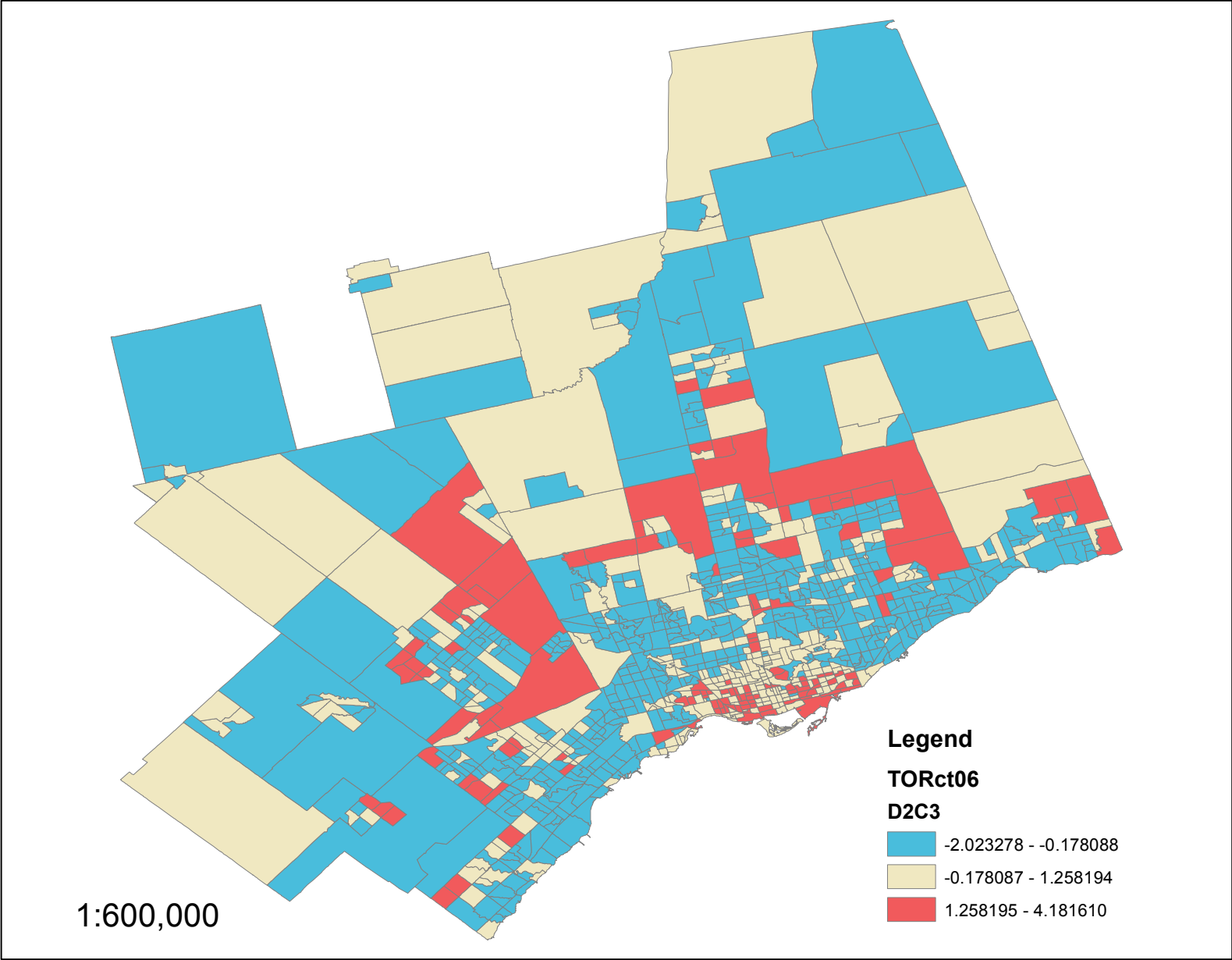
D2C1: Older housing stock, not built between 1971 and 2000. Apartment buildings, few single detached houses.



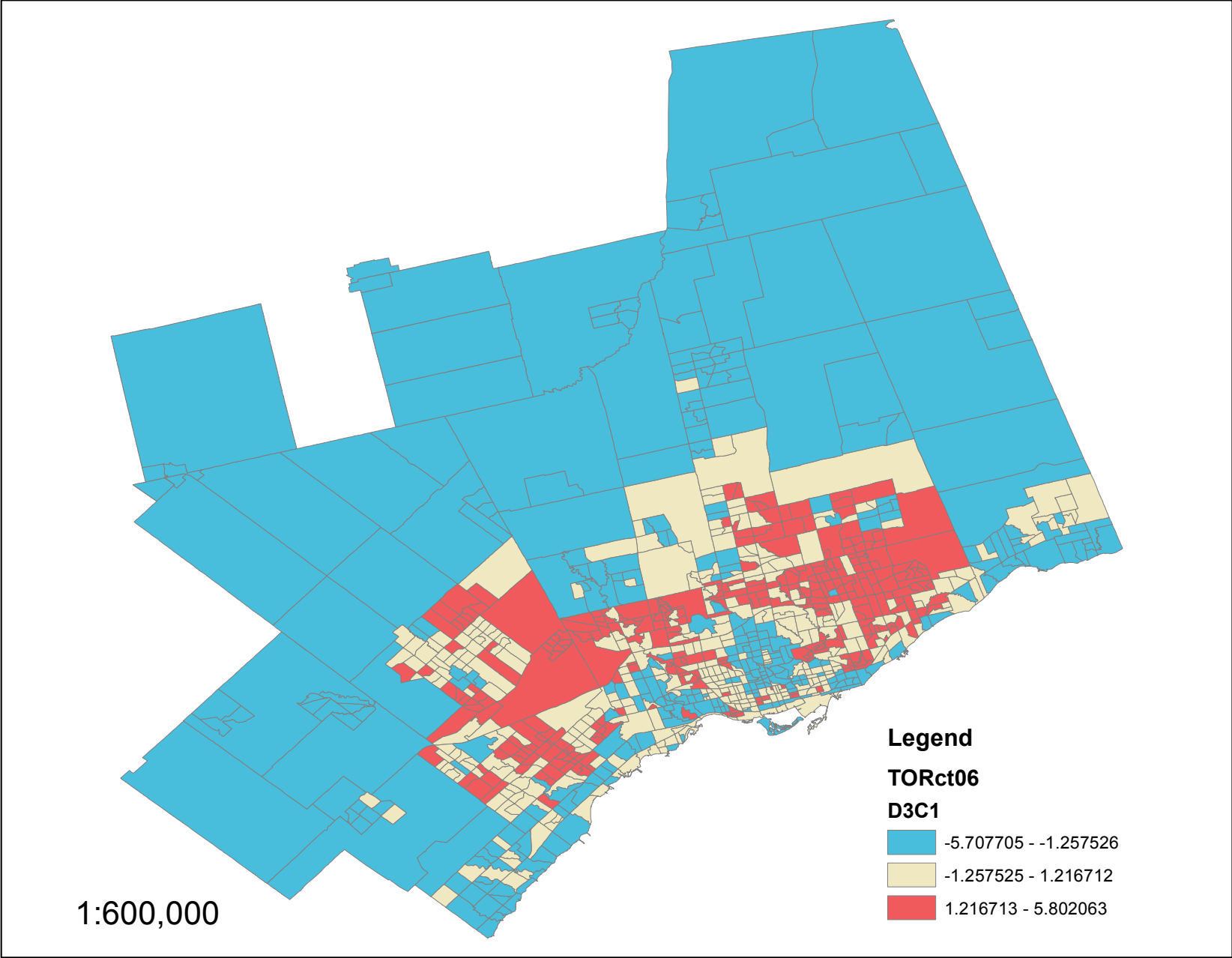
D2C2: Older housing stock, not built between 1971 and 2000. Single detached houses, few apartment buildings.



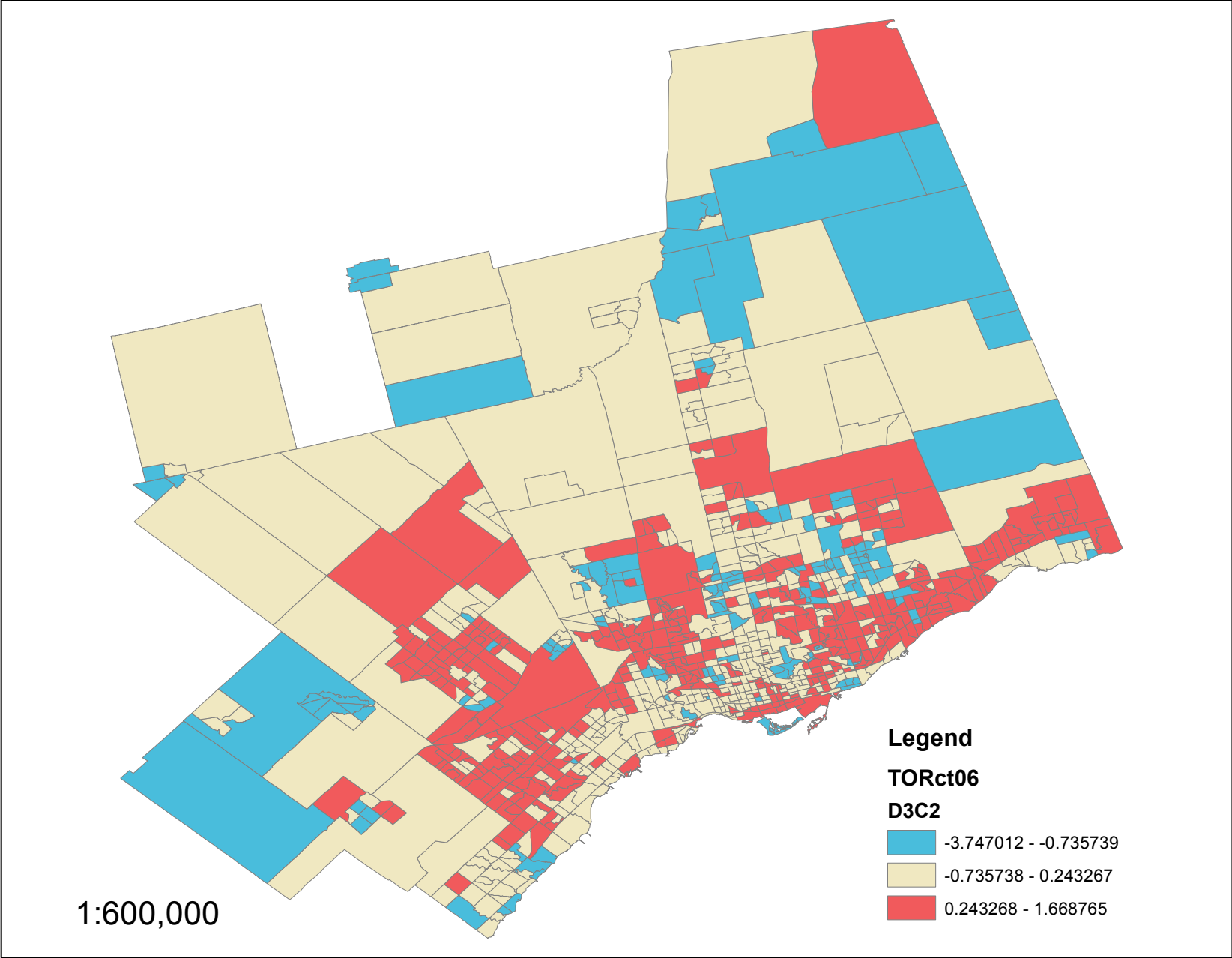
**D2C3: New housing stock, built largely from 2001 to 2006. Little or no existing housing stock from before 1946. Likely suburban tract development.**



D3C1: Many immigrant households, visible minorities speaking a primary language other than French or English at home.

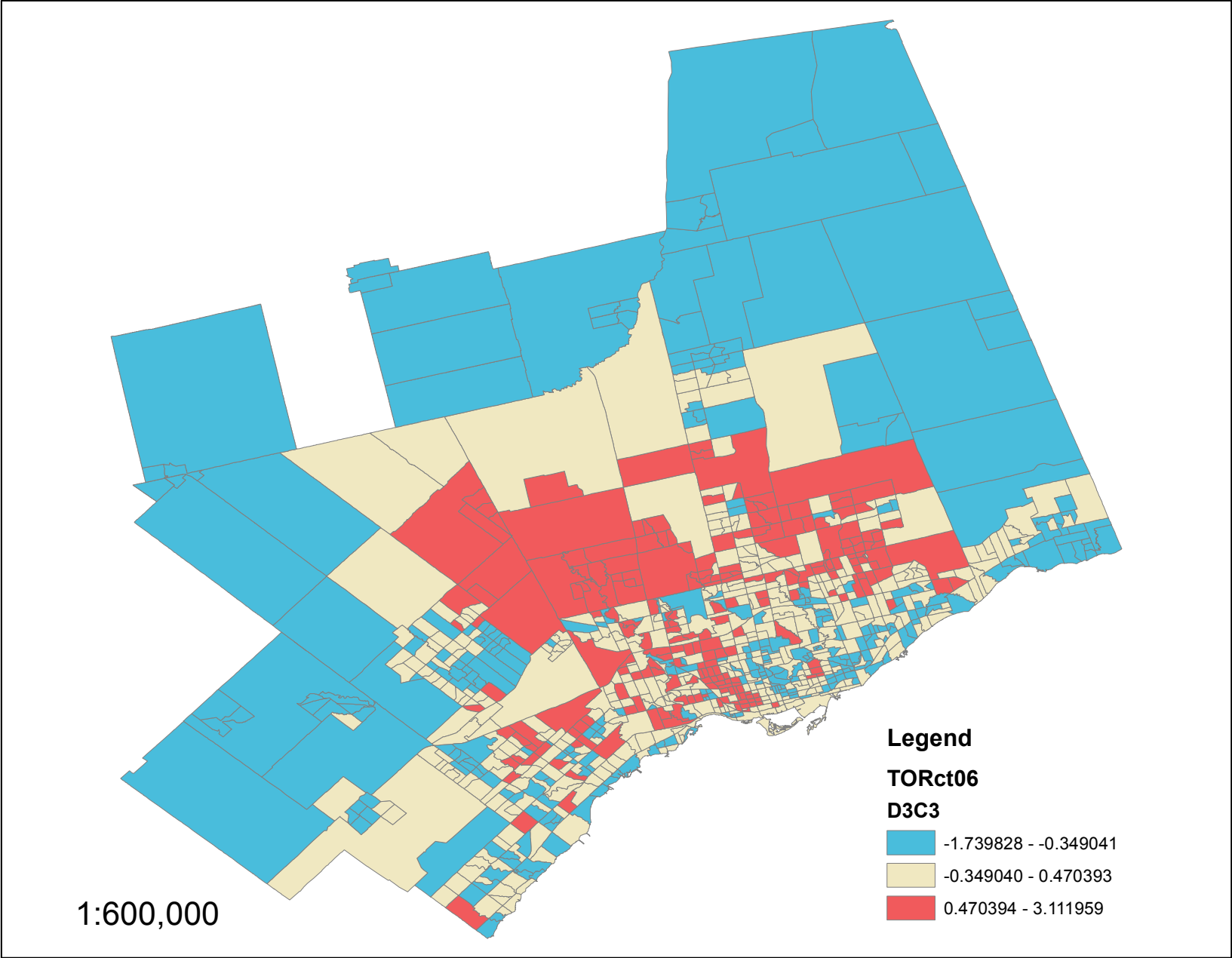


D3C2: Area of high ethnic diversity.

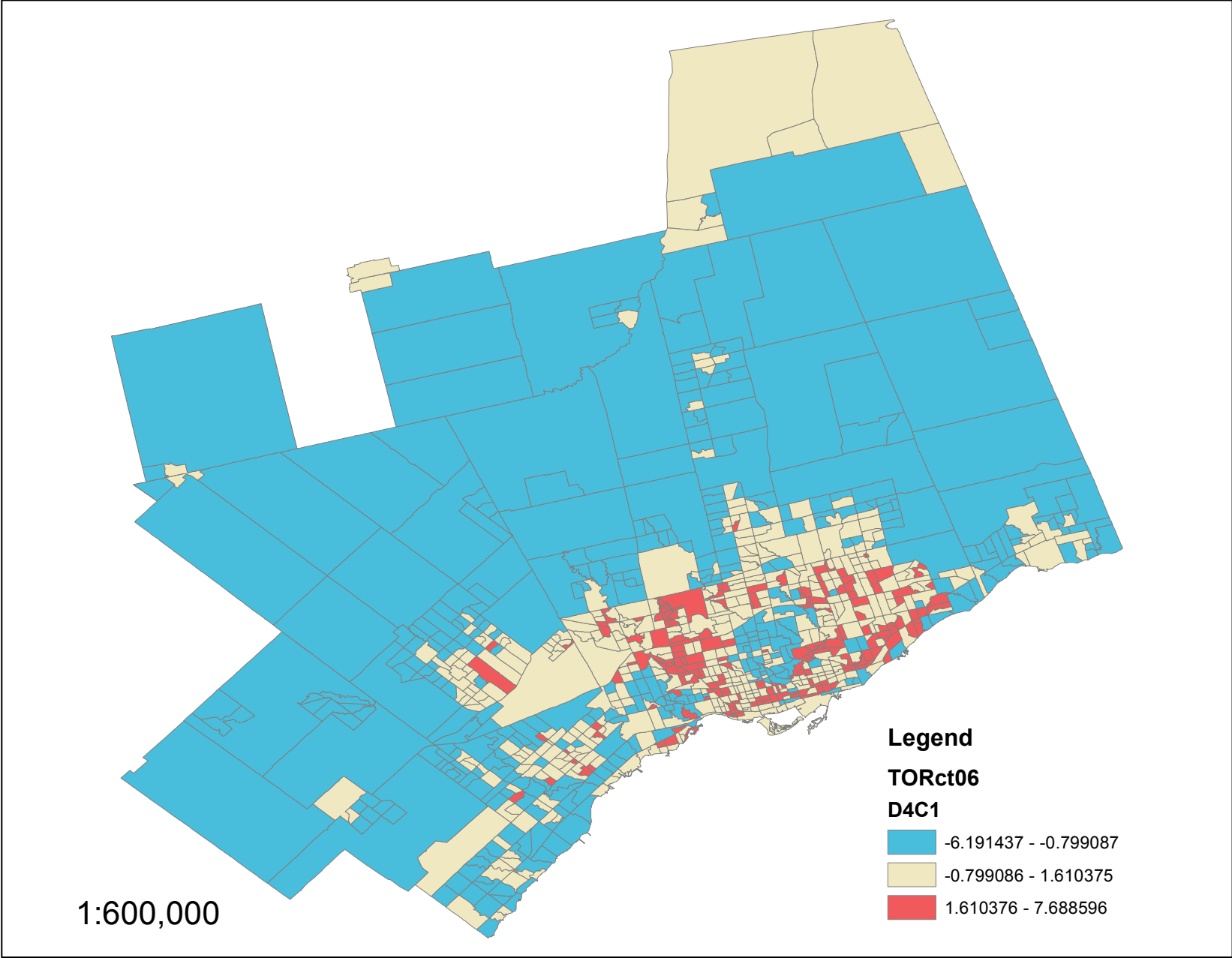




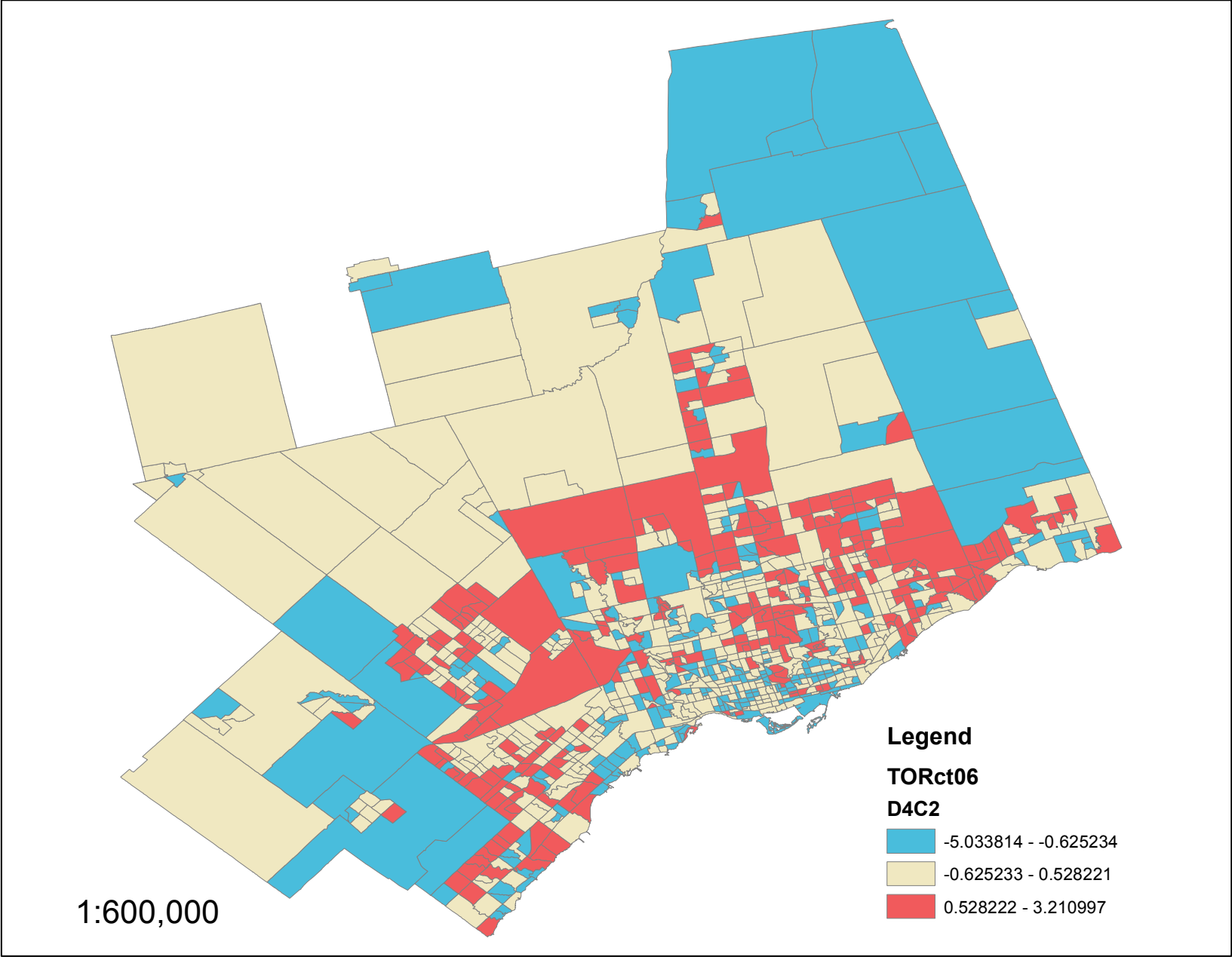
D3C3: Second generation Canadians, speaking a primary language other than French or English at home.



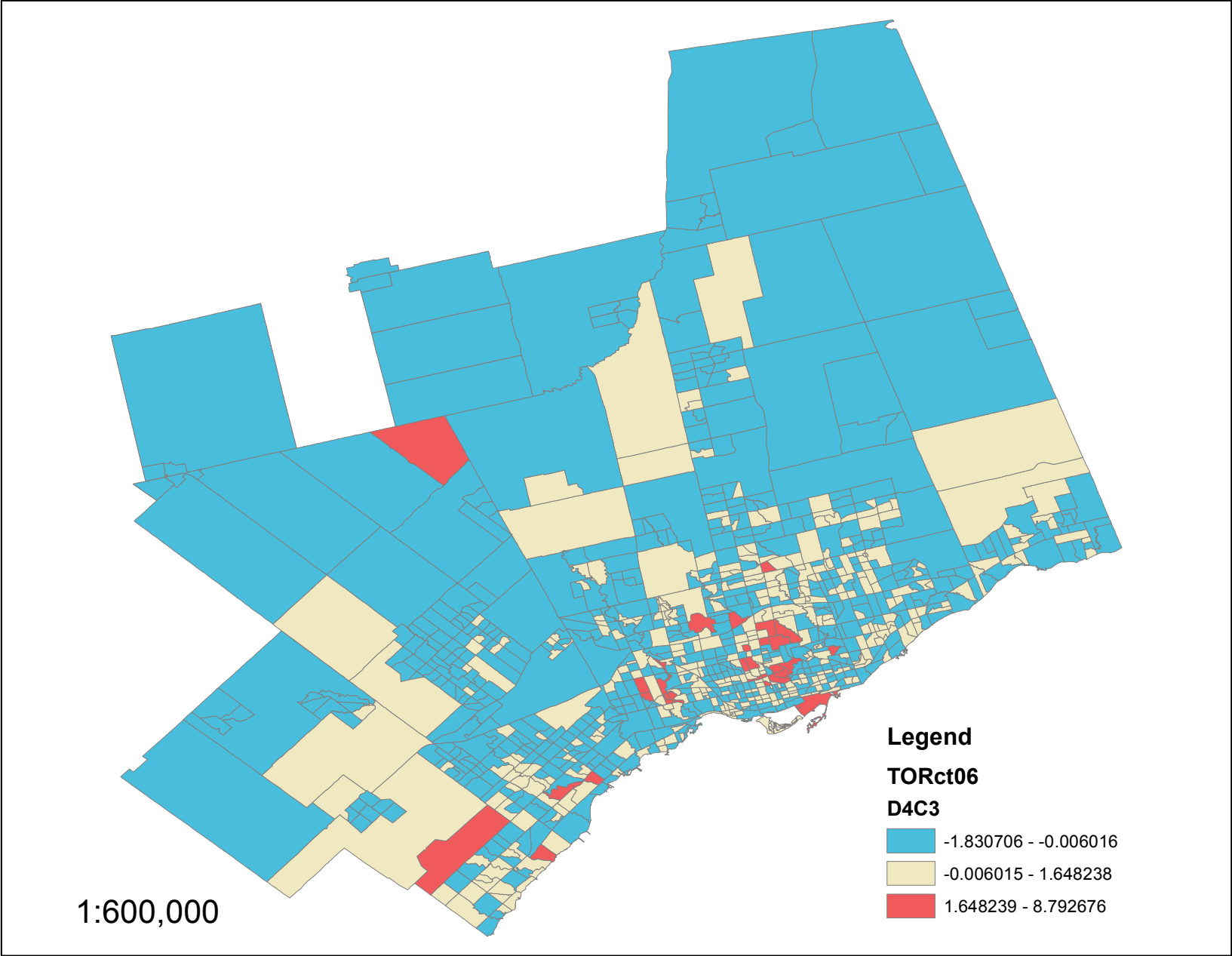
D4C1: High unemployment, low income economic and lone-parent families, high level of census tract inequality.



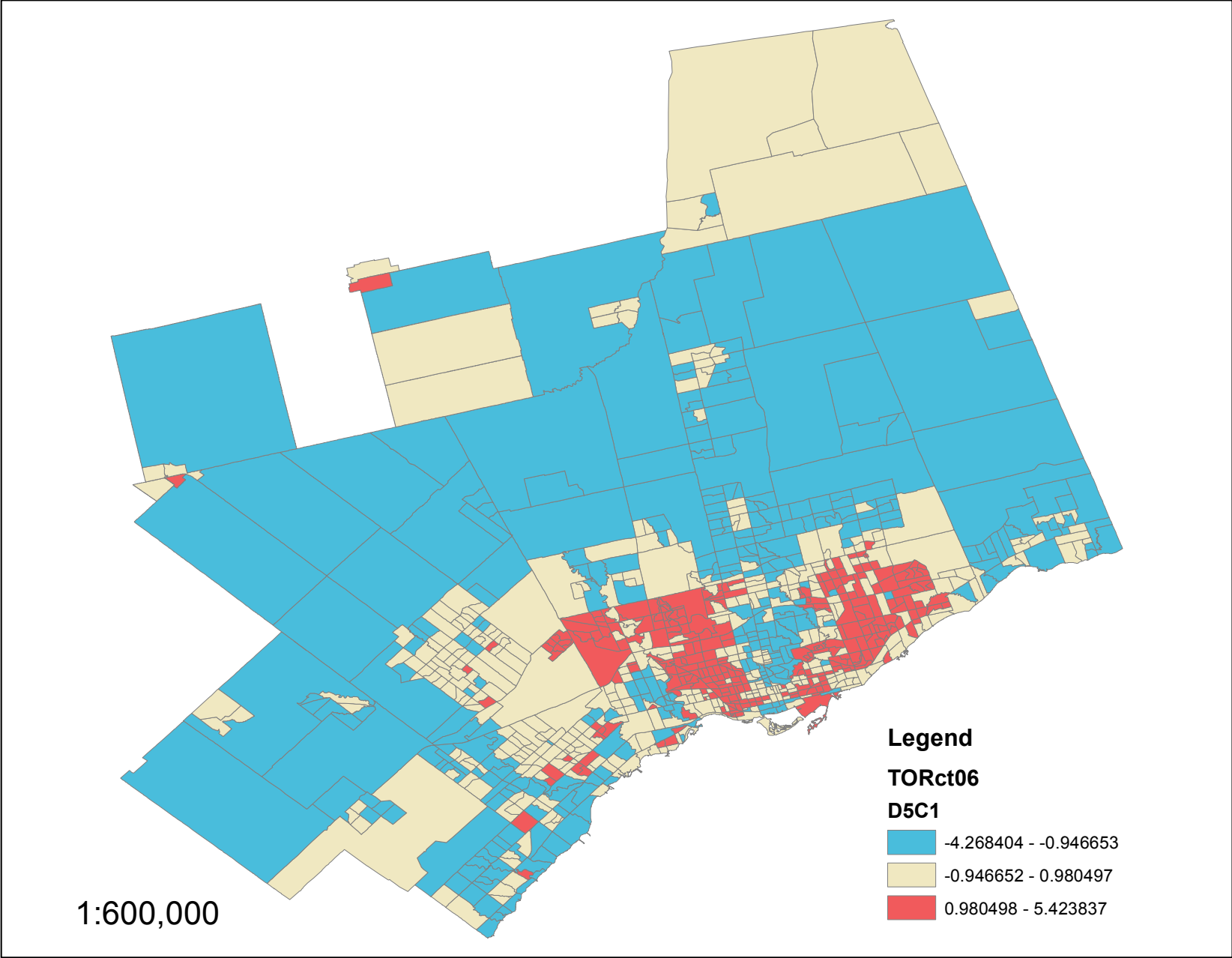
D4C2: Very low level of economic polarization.



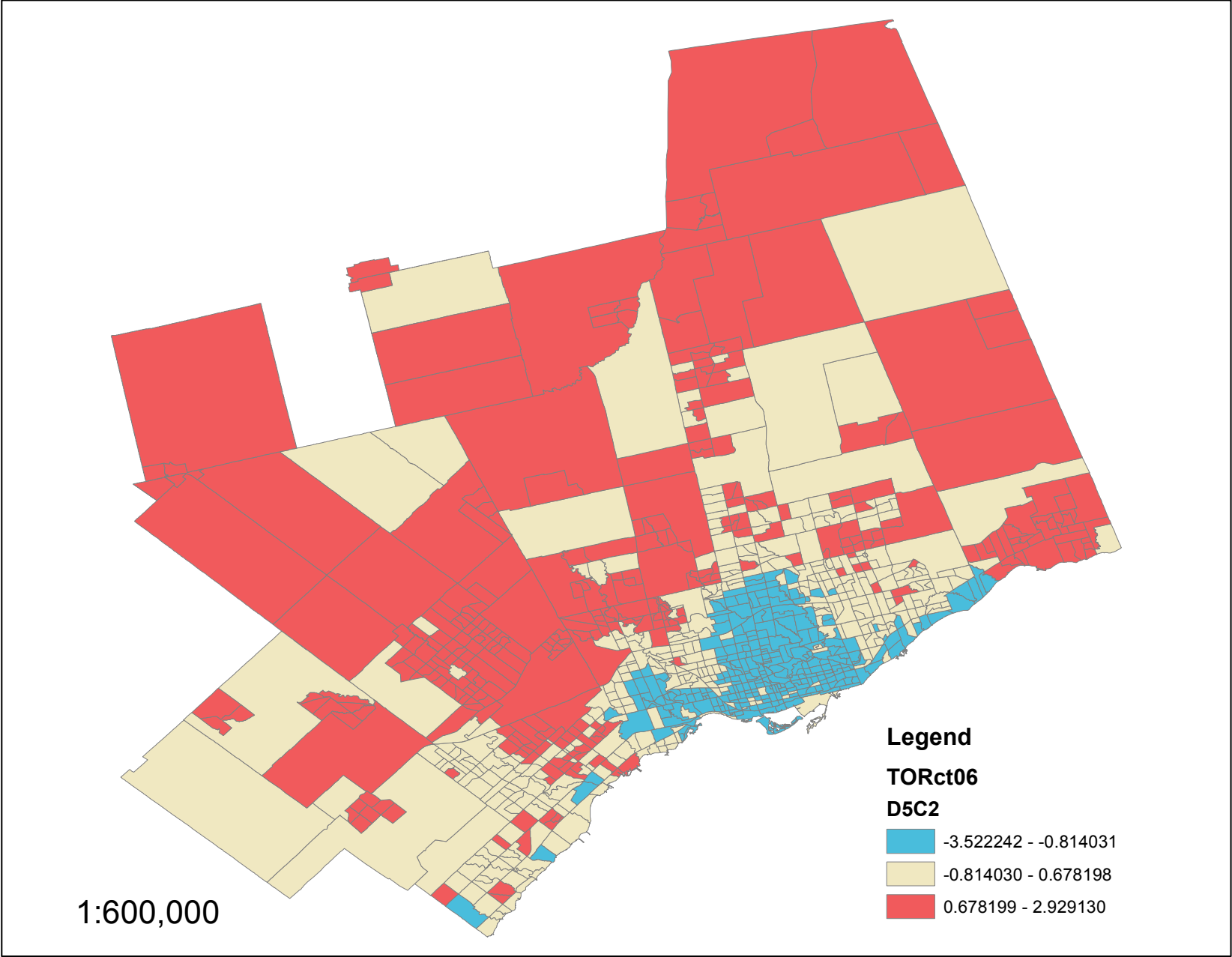
D4C3: Very high average household income, large economic polarization within census tract.



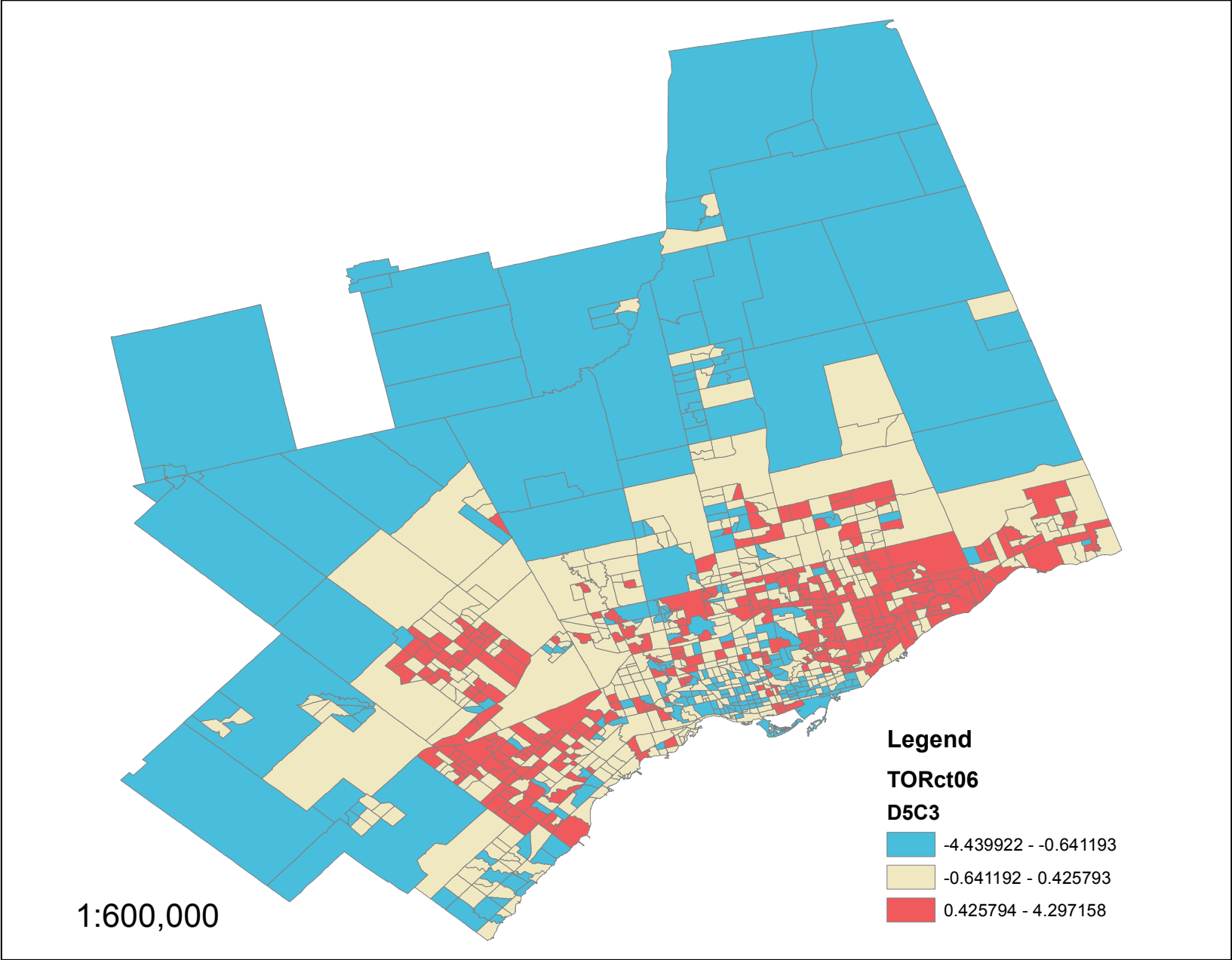
D5C1: Service sector employees, few managers.



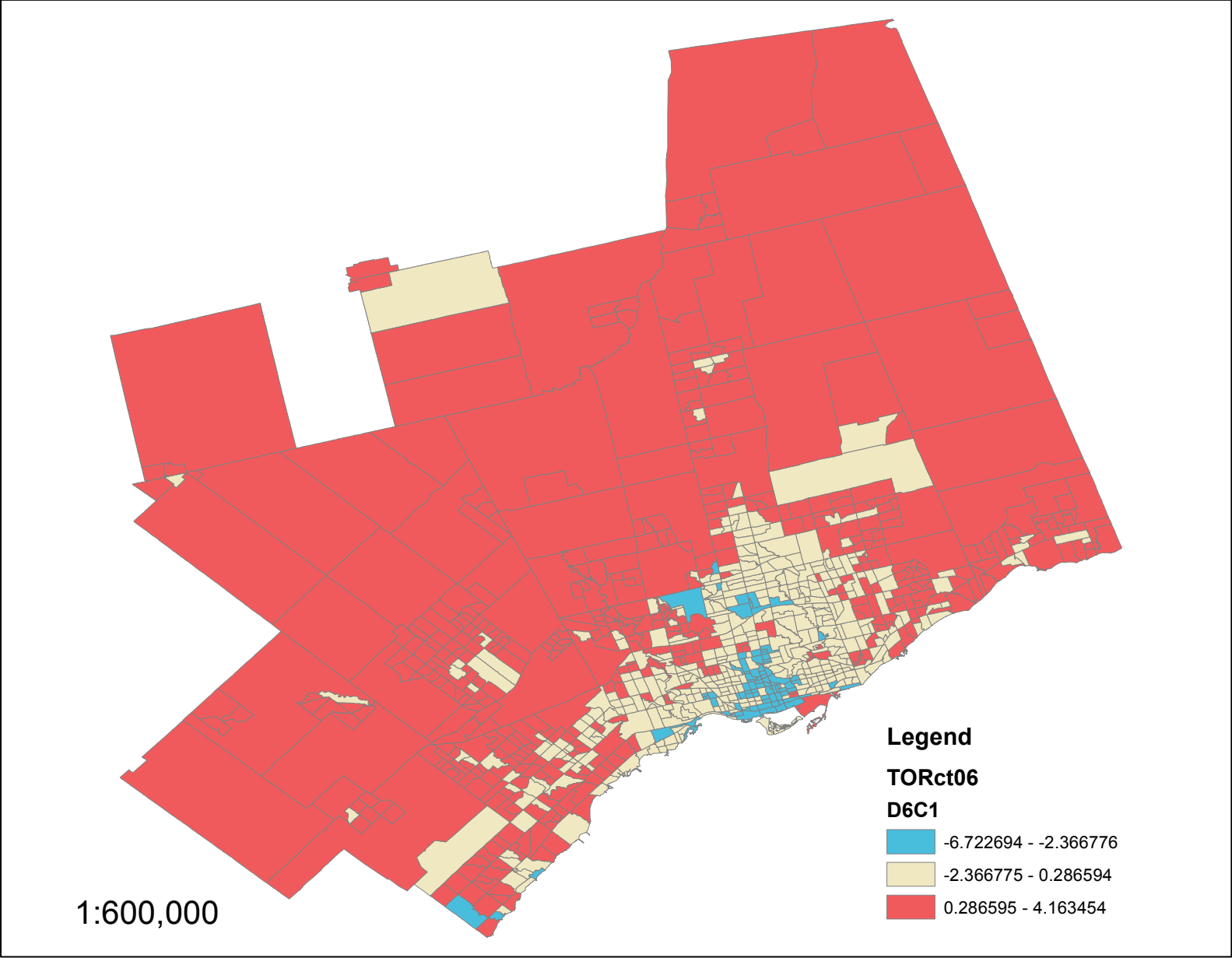
D5C2: Manufacturing sector employees, travelling large commutes by private transit.



D5C3: FIRE sector employees.

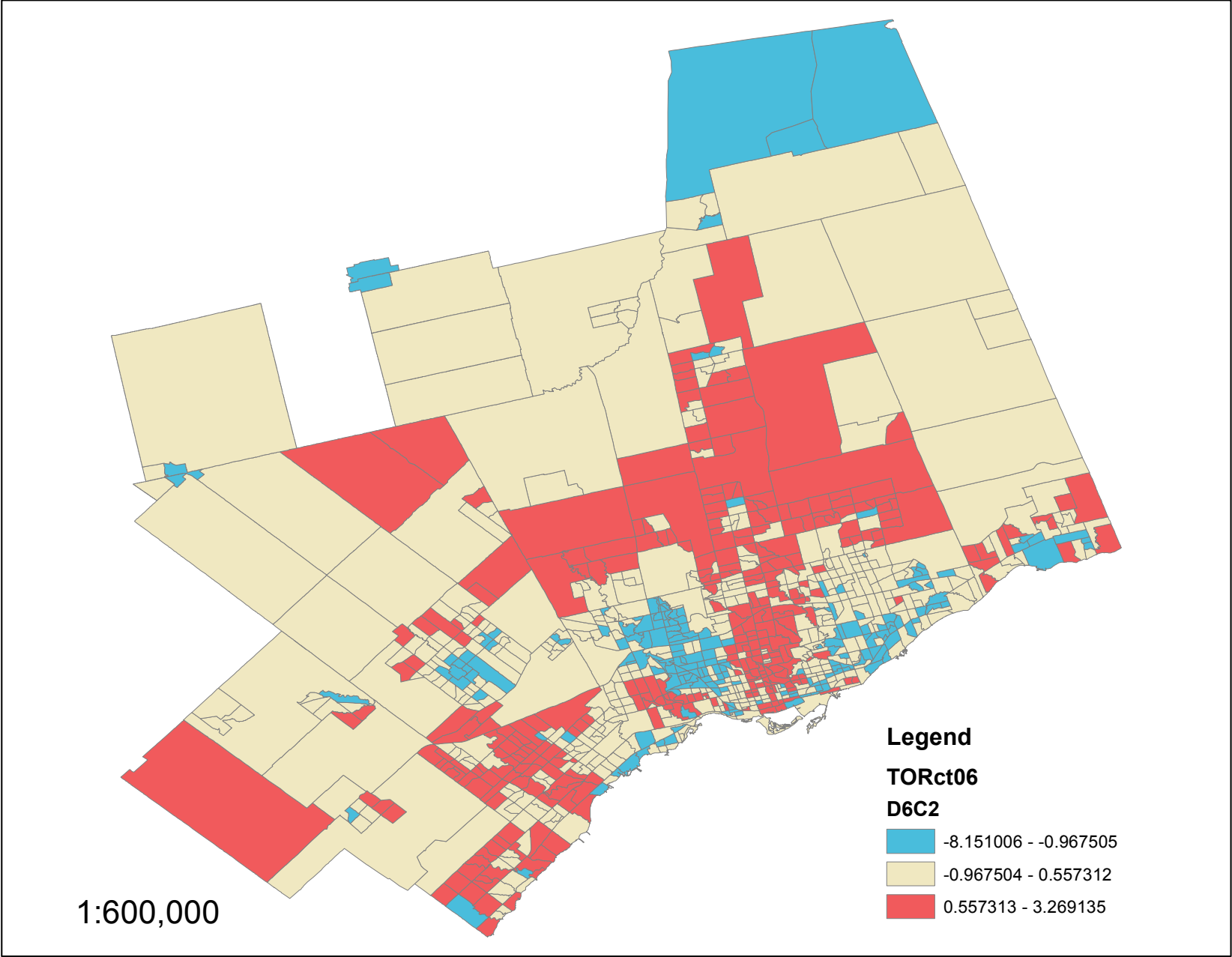


**D6C1: High levels of unpaid housework and childcare, households with children at home, single family households. Likely nuclear family household structure, one parent at home taking care of children and housework.**





D6C2: Highly educated, non-lone-parent households.



D6C3: Lone parent families doing a large amount of childcare, but not a large amount of housework.

