

Checklist of the spiders of British Columbia

[Robb Bennett](#), David Blades, Don Buckle, Claudia Copley, Darren Copley, Charles Dondale, and Rick C. West. May 2014

Notes:

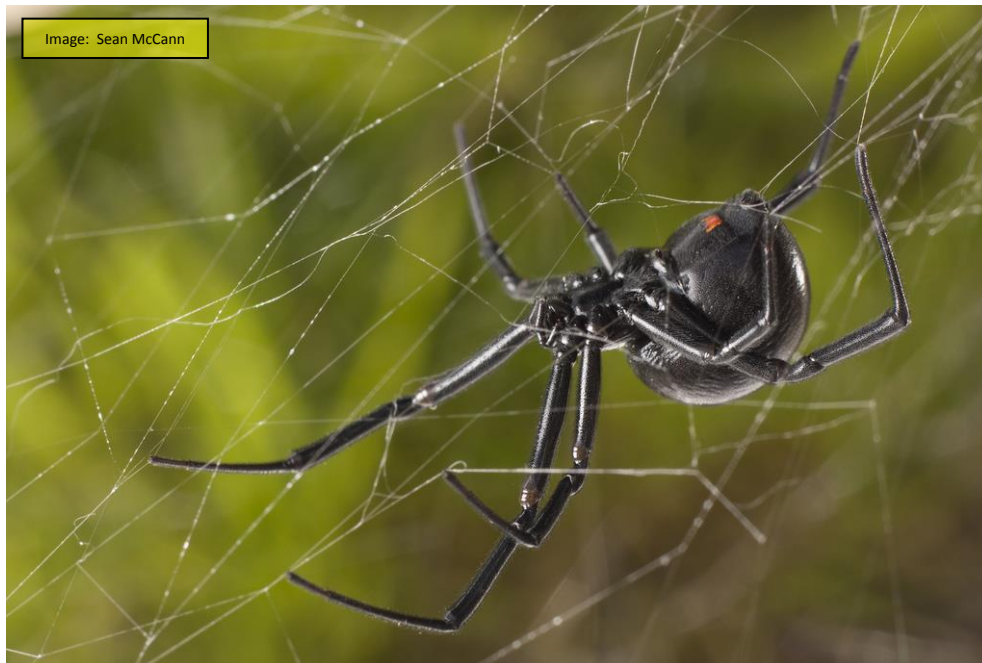
Taxonomy follows Norman I. Platnick's *World Spider Catalog* (<http://research.amnh.org/iz/spiders/catalog/INTRO1.html>). An asterisk (*) marks each of the over 50 species newly recorded for British Columbia and not included in the previous version (2012) of this list. As of May 2014, 781 spider species (including a few subspecies) have been recorded in British Columbia. Previous counts are 729 (2012), 700 (2010), 656 (2006), 570 (1988), 433 (1984), and 212 (1967).

We believe there are more than 1000 species of spiders (Araneae) in British Columbia. Although only 781 have been recorded so far, many regions of the province have never been sampled. The Royal BC Museum is supporting a significant effort to document the spider fauna of British Columbia through systematic surveys similar to the work undertaken for dragonflies in years past. Various colleagues have made substantial contributions to our database. In particular, we thank Wayne Maddison for his records of salticids new to BC, Gergin Blagoev for providing identifications (through barcoding) of problematic specimens, and a number of collectors for kindly sending us interesting specimens from interesting localities.

The long-term goal of this project is to produce a comprehensive field guide to the spiders of British Columbia. This goal is being achieved through our documentation of the spider fauna of the province, emphasizing species that are rare or threatened, in threatened habitats, introduced or invasive, in need of taxonomic clarification (including undescribed species), endemic to BC or have much of their geographical range in BC, in poorly sampled parts of BC, and/or illuminate historical changes in the province's biogeography.

In addition to clarifying taxonomy, natural history and distributions, and production of the comprehensive field guide, the project is resulting in annotated species lists such as this one, faunistic studies, identification keys, genus revisions, and descriptions of new species.

Mature female *Latrodectus hesperus* (western black widow) in its web at Island View Beach. Although the venom of black widows is neurotoxic to humans, bites from them are exceedingly rare, even where these spiders are abundant.



Agelenidae

Agelenopsis actiosa (Gertsch & Ivie)

Global: Southwestern BC to NS south to northwestern OR
BC: Victoria area (Saanich Inlet, Goldstream Prov Pk, Sidney)

Agelenopsis oklahoma (Gertsch)

Global: South central BC south to OK & KS
BC: Hedley/Nickelplate outlook, Chopaka, Kilpoola Lk, Oliver, Grand Forks, Cranbrook

Agelenopsis oregonensis Chamberlin & Ivie

Global: Southwestern BC to northwestern OR
BC: Victoria area (Victoria, nr Prospect Lk, Saanich Inlet), Cowichan Lake, Parksville, Summerland

Agelenopsis potteri (Blackwall)

Global: BC to NS south to northwestern MX
BC: Widespread across southern BC

Agelenopsis utahana (Chamberlin & Ivie)

Global: AK to NF south to UT & WY
BC: Victoria area (Thetis Lk., Victoria), Whistler, Bute Inlet, Terrace, Wells Gray Prov Pk, nr Prince George, Field, Canoe, Lillooet, Marble Canyon, Salmon Arm, Princeton, Old Hedley Rd, Chopaka, Beaton, Burton, Edgewood, Creston, Sunken Ck Tr (nr Cranbrook), lower Bull R valley (E of Cranbrook), Graves Lookout Tr (E of Whiteswan Lk), Beaver Valley (Glacier Nat Pk), Yoho Nat Pk (51°13'26"N 116°36'49"W, Boulder Ck, Emerald Lk), Kootenay Nat Pk (Daer-Pitts), Cabin Ck FSR (Flathead R drainage)

Eratigena agrestis (Walckenaer)

Global: Palaearctic; introduced in Nearctic - primarily Pacific Northwest and southern BC, at least one population known in southern ON
BC: Widespread across southern BC (mostly synanthropic, but also in natural habitats in southwest and south central BC), Alliford Bay (Moresby Island), Terrace

Eratigena atrica (C. L. Koch)

Global: Palaearctic; introduced in Nearctic - Pacific Northwest and southern BC, scattered records in AB, SK, & NF
BC: Widespread and mostly synanthropic across southern BC, in natural habitats in southwest and south central localities

Novalena intermedia (Chamberlin & Gertsch)

Global: Southwestern BC to northern CA
BC: Nanaimo, Victoria area (Saanich, Goldstream Prov Pk), S Pender Is, km 15 Darcy/Seton Portage Highline Rd, Rampart grassland (E of Cranbrook)

Tegenaria domestica (Clerck)

Global: Cosmopolitan
BC: Widespread & mostly synanthropic in BC; in natural habitats on southeastern Vancouver Island

Amaurobiidae

Amaurobius borealis Emerton

Global: Northern BC east to NF and NY
BC: Morley R Lodge, Tupper, Hwy 29 @ Szoo Rd, Hwy 29 @ Watson Slough, Hwy 97 S of Taylor

Arctobius agelenoides (Emerton)

Global: Holarctic; in Nearctic - AK to NU south to BC & MB
BC: Manson Ck, Ross Lk (Yoho Nat Pk), Stanley Glacier Tr (Kootenay Nat Pk)

Callobius canada (Chamberlin & Ivie)

Global: Southern BC south to northern OR & western MT
BC: Burton, Salmon Arm, Wycliffe, Cawston, Marble Canyon, Fountain Valley, Yale

Callobius enus (Chamberlin & Ivie)

Global: Southern BC south to ID & western MT
BC: Lakit Peak (Ft Steele), Sunken Ck Tr (nr Cranbrook), Invermere, nr St Mary Lk (W of Kimberley), Cabin Ck FSR (Flathead R drainage), Nelson, Wycliffe, Christina Lk, Cathedral Lks Prov Pk (Rim Trail), Summerland

Callobius nomeus (Chamberlin)

Global: Western NA, also in QC, LB, & NH
BC: Copper R valley, Manning Prov Pk, Ashnola Valley, widespread in eastern half of BC

Callobius pictus (Simon)

Global: AK (eastern Aleutian Islands) south to mid-coastal CA
BC: Widespread at coastal localities, inland along the Fraser Valley to Lillooet; Bonus Lk, Terrace

Callobius severus (Simon)

Global: Southwestern BC to southwestern CA
BC: Widespread on Vancouver Island, Georgia Basin islands, and lower mainland of BC north at least to Smith Inlet

Cybaeopsis euopla (Bishop & Crosby)

Global: Forested parts of CAN from NT and eastern BC to NF and south to WI & ME
BC: Field, Tupper

Cybaeopsis wabritaska (Leech)

Global: AK (eastern Aleutian Islands) to northern WA
BC: Revelstoke, Yoho Nat Pk (Emerald Lk), Burton, Mosquito Ck (Nakusp), Manson Ck, Six Mile Lk, Copper R valley, New Hazelton, Burnaby, Delta (Burns Bog), Jordan River bog (Vancouver Is)

Zanomys aquilonia Leech

Global: Southwestern BC to southwestern OR
BC: Mudge Is, Gabriola Is, Sansum Narrows Reg Pk (nr Genoa Bay), Saltspring Is (Mt Maxwell, Long Hbr), Saturna Is (nr Money Lk, Narvaez Bay), Gulf Islands Nat Pk (Acland Is, Brackman Is, Bright Is), Victoria area (nr Prospect Lk, Observatory Hill, Goldstream Prov Pk, Jocelyn Hill, Witty's Lagoon, Rocky Pt, Pearson College, Mt Braden, Sugarloaf Mtn), Yellow Point, Whistler (Alpha Lk, Brandywine Prov Pk), Highline Rd nr Darcy

Anapidae

* *Comaroma mendocino* (Levi)

Global: Southwestern BC & coastal CA
BC: Saturna Is (nr Money Lk)

Antrodiaetidae

Antrodiaetus cerberus Coyle

Global: Northeastern WA & southeastern BC
BC: Nelson, Burton, East Arrow

Antrodiaetus hageni (Chamberlin)

Global: South central BC, eastern WA & eastern OR
BC: Merritt, Monte Ck., Princeton, Vernon, Lumby, Summerland, Apex Mountain, Vaseux Lake, White Lk, Osoyoos (Haynes Lease), Summerland

Antrodiaetus pacificus (Simon)

Global: West coastal NA from BC to northern CA
BC: Widespread at coastal localities on Vancouver Island north to Haida Gwaii (Queen Charlotte Islands)

Antrodiaetus pugnax (Chamberlin)

Global: South central BC south to northern OR and adjacent ID
BC: Pend d'Oreille Valley (Trail), Nelson, "Darkwoods" ne of Salmo (nr Porcupine Lk, Mt Wurttemberg, Swamp Basin Rd), Cornice Ridge (Stagleap Prov Pk)

Anyphaenidae

Anyphaena aperta (Banks)

Global: Southwestern BC to CA
 BC: Kyuquot, Qualicum, Parksville, Errington, Sansum Narrows Reg Pk (nr Genoa Bay), Victoria area (Victoria, Witty's Lagoon, Rocky Pt), Big Red Is, Roberts Ck

Anyphaena pacifica (Banks)

Global: BC & southwestern AB south to CA and NM
 BC: Terrace, Nanaimo, Carmanah Valley, Roberts Ck, Highline Rd (nr Darcy), Hope, Mt. Kobau, Osoyoos, Mt Baldy, Apex Mtn

Araneidae*Aculepeira carbonarioides* (Keyserling)

Global: Holarctic; in Nearctic - AK to QC south to CO & UT
 BC: Mount St Paul, Pink Mtn, Cathedral Lks Prov Pk, Kamloops

Aculepeira packardii (Thorell)

Global: Holarctic; in Nearctic - YT to LB south to northern MX & PA
 BC: Widespread in BC

Araneus corticarius (Emerton)

Global: AK to NS south to ND & PA
 BC: Vernon

Araneus diadematus Clerck

Global: Palaearctic; introduced to Nearctic - southwestern BC to OR and MI to NF
 BC: Vancouver Is & adjacent mainland, Kelowna, Queen Charlotte City

Araneus gemma (McCook)

Global: Southeastern AK to MT south to CA
 BC: Southern Vancouver Is, Lytton, Kaslo, Creston

Araneus gemmoides Chamberlin & Ivie

Global: Southern BC to MB south to CA & FL
 BC: Widespread in southern BC

Araneus iviei (Archer)

Global: BC to NS south to MI & PA
 BC: Prince George, Nakusp

Araneus marmoreus Clerck

Global: Holarctic; in Nearctic - AK to NF south to OR & SC
 BC: Widespread in BC

Araneus montereyensis (Archer)

Global: West coastal NA from southwestern BC to southern CA
 BC: Victoria area (Rocky Pt)

Araneus nordmanni (Thorell)

Global: Holarctic; in Nearctic - AK to NF south to AZ & SC
 BC: Widespread in BC

Araneus saevus (L. Koch)

Global: Holarctic; in Nearctic - AK to NF south to OR & NY
 BC: Widespread in BC

Araneus trifolium (Hentz)

Global: AK to NF south to CA & AL
 BC: Widespread in BC

Araneus washingtoni Levi

Global: Northern BC to NF south to NH
 BC: Mt St Elias, Golden

Araniella displicata (Hentz)

Global: Holarctic; in Nearctic - AK to NF south to CA & NC
 BC: Widespread in BC

Araniella proxima (Kulczynski)

Global: Holarctic; in Nearctic - AK to NF south to BC & NB
 BC: Johnson Bay (Babine Lk)

Argiope trifasciata (Forsk.)

Global: Nearly cosmopolitan; in Nearctic - southern BC to NS south throughout region
 BC: Widespread in southern BC, Williams Lk

Cyclosa conica (Pallas)

Global: Holarctic; in Nearctic - AK to NF south to Guatemala & VA
 BC: Widespread in BC

Hypososinga alberta Levi

Global: Holarctic; in Nearctic - northern BC to central SK south to southern AB
 BC: Summit Lk (Alaska Hwy)

Hypososinga groenlandica Simon

Global: YT to Greenland south to BC & QC
 BC: Delta (Burns Bog), Apex Mtn

Hypososinga pygmaea (Sundevall)

Global: Holarctic; in Nearctic - AK to NF south to CO & Cuba
 BC: Haida Gwaii (Queen Charlotte Islands), Hwy 29 @ Watson Slough, Kamloops, Enderby, Summerland, Okanagan Falls, Beaton, N end of Whitetail Lk (nr Canal Flats)

Hypososinga rubens (Hentz)

Global: Western NT to NL, south to eastern TX and FL
 BC: Southern Okanagan Valley

Larinioides cornutus (Clerck)

Global: Holarctic; in Nearctic - AK to NF south to Panama
 BC: Atlin, Ft Fraser, Hwy 29 @ Watson Slough, Enderby, Creston

Larinioides patagiatus (Clerck)

Global: Holarctic; in Nearctic - AK to NF south to CA & NC
 BC: Widespread in BC

Larinioides sclopetarius (Clerck)

Global: Palaearctic; introduced to NA - BC to NF south to UT & NC
 BC: Mesachie Lk, Pitt Meadows, Manning Prov Pk, Okanagan Landing, Nelson

Metepeira foxi Gertsch & Ivie

Global: Southern BC & AB south to CA & northern MX
 BC: Widespread in southern interior BC

Metepeira grandiosa Chamberlin & Ivie

Global: Interior BC to SK south to CA
 BC: Prince George, Falkland, Vernon, Osoyoos

Metepeira palustris Chamberlin & Ivie

Global: Northern BC to NS south to WI & PA
 BC: Atlin, Merritt, Okanagan Valley

Neoscona arabesca (Walckenaer)

Global: BC to NS south to Central America & West Indies
 BC: Widespread in central & southern BC

Neoscona pratensis (Hentz)

Global: Northern BC to NH south to KS & FL
 BC: Terrace

Parazygiella dispar (Kulczynski)

Global: Holarctic; in Nearctic - west coastal NA from southeastern AK to CA
 BC: Widespread on coastal BC

Singa keyserlingi McCook

Global: Northeastern BC to QC south to MO and AB
 BC: Pouce Coupe

Zygiella atrica (C. L. Koch)

Global: Palaearctic; introduced to coastal NA - southwestern BC, NF to NY
 BC: Victoria, Vancouver

Zygiella nearctica Gertsch

Global: AK to NL, south to CO and NC
 BC: Kinaskan Lk, Boya Lk, Atlin area, Hwy 29 @ Lynx Ck

Zygiella x-notata (Clerck)

Global: Holarctic & Neotropical; in Nearctic - coastal NA from southwestern BC to CA, MA to VA
 BC: Metlakatla, Wellington, Sooke, N Pender Is, Langford, Victoria, Vancouver

Clubionidae

- Clubiona bryantae* Gertsch
Global: AK to NF south to WY & MA
BC: Pink Mtn, Delta (Vancouver)
- Clubiona canadensis* Emerton
Global: BC to NF south to CO & NC
BC: Widespread in BC
- Clubiona furcata* Emerton
Global: AK to NF south to UT and ON
BC: Johnson Bay (Babine Lk)
- Clubiona kastoni* Gertsch
Global: AK to NF south to CA & NC
BC: Wellington, Pitt Meadows, Haney, Osoyoos, Burton, Mosquito Ck (Nakusp), Bush Arm Kinbasket Lk (Hope Ck), Yoho Nat Pk (51 13'28"N 116 36'53"W), Hwy 29 @ Szoo Rd
- Clubiona kulczynskii* Lessert
Global: Holarctic; in Nearctic - AK to NF south to CO & NC
BC: Widespread in northern BC, Yoho Nat Pk (51 13'28"N 116 36'53"W, Emerald Lk)
- Clubiona lutescens* Westring
Global: Palaearctic; introduced in Nearctic - southern BC and WA
BC: Vancouver, Delta, Edgewood
- Clubiona mimula* Chamberlin
Global: Southern BC to UT south to CA
BC: Victoria area (Pearson College), Vancouver, Summerland
- Clubiona moesta* Banks
Global: AK to NS south to CA & NY
BC: Lillooet, Salmon Arm, Canoe, Osoyoos, nr Vanderhoof, Yoho Nat Pk (nr Wapta Falls), Kootenay Nat Pk (Daer-Pitts)
- Clubiona mutata* Gertsch
Global: Southern BC to SK south to AZ and NE
BC: Osoyoos
- Clubiona norvegica* Strand
Global: Holarctic; in Nearctic - AK to NF south to UT & NY
BC: Goldstream Prov Pk, Christina Lk (Bonanza Pass), Jackfish Ck, Liard R Hot Springs, Babine Lk (Johnson Bay), Flathead R drainage (Commerce Ck)
- Clubiona opeongo* Edwards
Global: Southern BC to QC
BC: Clearwater Valley, Edgewood
- Clubiona pacifica* Banks
Global: Southwest AK to southwestern AB south to CA
BC: Widespread on coastal BC, Kaslo, Creston, Fernie, Kootenay Nat Pk (Daer-Pitts)
- Clubiona pallidula* (Clerck)
Global: Palaearctic; introduced in Nearctic - southwestern BC & western WA, southern ON
BC: Victoria, Vancouver
- Clubiona praematura* Emerton
Global: AK to NB south to northern BC & ME
BC: Chilkat Pass, Summit Lk, Pink Mtn
- Clubiona riparia* L. Koch
Global: AK to NF south to NM & MD
BC: Kamloops, Osoyoos, Burton, Mosquito Ck (sw of Nakusp), East Arrow, Creston
- Clubiona trivialis* C. L. Koch
Global: AK to NF south to AZ & NY
BC: Cape Scott, Brooks Peninsula, Carmanah Valley, Roberts Ck, Whistler (Brandywine Prov Pk), Hope, Manning Prov Pk, nr Prince George, nr Salmon Valley, Yoho Nat Pk, Emerald Lk, Lower Post

- Castianeira alteranda* Gertsch
Global: Southern BC to southern SK south to CO
BC: Mt Kobau
- Castianeira longipalpa* (Hentz)
Global: Southern BC to NS south to UT, OK, & FL
BC: Widespread in southern BC
- Castianeira walsinghami* (O. P.-Cambridge)
Global: Southern BC to OR
BC: Victoria, Salmon Arm, Minnie Lk, Riske Ck, Thompson R ravine below Logan Lk, Vernon, White Lk, Vaseux Lk, S of Kilpoola Lk, Bumpers Flats W.A. (nr Ft. Steele), Findlay Ck. (W of Canal Flats), Grasmere-Dorr FSR (nr Lk Kooocanusa)
- Meriola californica* (Banks)
Global: Southwestern BC to northwestern MX
BC: Parksville, Gulf Islands Nat Pk (Cabbage Is), S Hawkins Is (nr Salt Spring Is)
- Meriola decepta* Banks
Global: USA (and southern BC) south to Peru & Brazil
BC: White Lk (southern Okanagan Valley)
- Phrurotimpus borealis* (Emerton)
Global: Southern BC to NS south to northern MX & NC
BC: Widespread in southern BC, Hwy 29 NE of Hudsons Hope, Hwy 29 @ Lynx Ck
- Phrurotimpus certus* Gertsch
Global: Southeastern BC to NS south to WY and AL
BC: Max/Madeline Lk (Penticton), Kilpoola Lk, Rampart grassland (E of Cranbrook)
- Scotinella pugnata* (Emerton)
Global: Southwestern BC to NS south to UT & DE
BC: Parksville, Gulf Islands Nat Pk (Big & Tiny D'Arcy Is), Whistler (Brandywine Prov Pk), Manning Prov Pk (Paintbrush Tr), Cathedral Lks Prov Pk (Glacier Lk Tr), Old Hedley Rd, Kilpoola Lk area, Mt Kobau, Idaho Pk (nr New Denver), Evening Ridge Mtn (nr Nelson), "Darkwoods" NE of Salmo (Swamp Basin Rd.), Kootenay Pass, Gray Ck Pass (Crawford Bay), Pend d'Oreille Valley, Bumpers Flats WA (nr Ft Steele), Sunken Ck Tr (nr Cranbrook), lower Bull R valley (E of Cranbrook), Findlay Ck (W of Canal Flats), Graves Lookout Tr (E of Whiteswan Lk), White R (E of Whiteswan Lk Prov Pk), Cabin Ck FSR (Flathead R drainage), Beaver Valley (Glacier Nat Pk), Hwy 29 NW of Ft St John, Hwy 52 SW of Dawson Ck
- Scotinella sculleni* (Gertsch)
Global: Southwestern BC, WA, & OR
BC: Salt Spring Is

Cybaeidae

- Cybaeina confusa* Chamberlin & Ivie
Global: Haida Gwaii (Queen Charlotte Is) south to northwestern OR
BC: Banks Is, Kunghit Is, Port Renfrew
- Cybaeina minuta* (Banks)
Global: Western & southern Vancouver Is south to northwestern OR
BC: Victoria, Kyuquot, Tofino
- Cybaeota nana* Chamberlin & Ivie
Global: Southwestern BC south to northern UT and southern CA
BC: Victoria area (Pearson College, Mt Braden, nr Prospect Lk, Observatory Hill, Saanich Inlet, Goldstream Prov Pk, Jocelyn Hill), Gulf Islands Nat Pk (Tumbo Is), nr Prevost Is (N Acland Is, Glenholme Is, N Hawkins Is), Long Harbour, Tent Is (nr Chemainus), Sansum Narrows Reg Pk (nr Genoa Bay), Beaton
- Cybaeota shastae* Chamberlin & Ivie
Global: AK panhandle south to southern CA
BC: Widespread on coastal BC, Marble Canyon, "Darkwoods" NE of Salmo (Tye railway tunnel), Flathead-Sage FSR

Corinnidae

- Cybaeus bulbosus* Exline
Global: South central BC south to northeastern OR and adjacent ID
BC: 24 km E of Vernon
- Cybaeus eutypus* Chamberlin & Ivie
Global: Mid-coastal BC south to northwestern OR
BC: Widespread in southwestern BC from Rivers Inlet area to southern Vancouver Is
- Cybaeus morosus* Simon
Global: Western NA from Adak Is (Aleutians) to west central CA
BC: Widespread from Haida Gwaii (Queen Charlotte Islands) and Vancouver Is east to the Rocky Mtns
- Cybaeus reticulatus* Simon
Global: West coastal NA from Attu Is (western-most Aleutians) south to northwestern CA
BC: Widespread on coastal BC (inland to Copper R valley nr Terrace)
- Cybaeus shoshoneus* Chamberlin & Ivie
Global: Northern ID and adjacent areas of BC, WA, OR, & MT
BC: Idaho Pk (nr New Denver), Evening Ridge Mtn (S of Nelson), "Darkwoods" NE of Salmo (Wurttemberg Mtn, Porcupine Lk, km 31.5 Porcupine Rd, Elmo Rd, nr Devil's Hole Lk), Waldie Lk (E of Salmo), Kootenay Pass (Bridle Lk, Cornice Ridge, Ripple Ridge), Glacier Nat Pk (Beaver Valley)
- Cybaeus signifer* Simon
Global: West coastal NA from BC south to central CA
BC: Widespread on Haida Gwaii (Queen Charlotte Is) and Vancouver Is.
- Cybaeus sinuosus* Fox
Global: AB and BC in Rocky and East Kootenay Mtns
BC: Yoho Nat Pk (51 13'N 116 36'W, Boulder Ck Ranger Sta, Takakkaw Falls, Yoho Valley Rd, jct Yoho & Kicking Horse Rivers, Lk O'Hara access rd, Odaray/Grandview Tr, Emerald Lk, Opabin Plateau, Lk McArthur Tr, other localities), Kootenay Nat Pk (Daer-Pitts), Whitetooth Ridge, Sale Mtn, Mt Fidelity, Field, Nelson, Fernie, Mosquito Ck (nr Nakusp), Edgewood, Granite Mtn (Rossland), Graves Lookout Tr (E of Whiteswan Lk)
- Cybaeus* sp. L. Koch
Global: South central BC to north central WA
BC: Lillooet, Marble Canyon, Manning Prov Pk, Apex Mtn, Orofino Mtn, Mt Kobau, Cathedral Lks Prov Pk (?), Summerland
- Dictynidae**
- Arctella lapponica* Holm
Global: Holarctic; in Nearctic - northern BC
BC: Summit Lk (Alaska Hwy)
- Argenna yakima* Chamberlin & Gertsch
Global: Northwestern BC to western WA
BC: St Elias Mtns (59.27N 137.54W), Blowdown Pass (SW of Lillooet)
- Blabomma californicum* (Simon)
Global: Southwestern BC to northwestern MX
BC: Victoria area (Saxe Pt, Beacon Hill, Harling Pt, Christmas Hill, Sidney, Sidney Is, Forrest Is, Saanich, Haliburton Farm, Island View Beach, Trial Is, Witty's Lagoon, Race Rocks)
- Brommella monticola* (Gertsch & Mulaik)
Global: Southern BC and northern MT south to NM and UT
BC: west side Cornice Ridge (Kootenay Pass), Idaho Pk (nr New Denver), Gray Ck Pass (nr Crawford Bay), Lakit Pk (Ft Steele), Paget Pk (nr Field), Cabin Ck FSR (Flathead R drainage)
- Cicurina idahoana* Chamberlin
Global: Southern BC to western MT south to OR
BC: Lynn Valley (N Vancouver), Haney, Whistler (Brandywine Prov Pk), Lillooet, Blackwall Peak (Manning Prov Pk), Ashnola Valley, Cathedral Lks Prov Pk (Glacier Lk Tr), Mt Kobau, Penticton, Mt Baldy,
- Granite Mtn (Rossland), Mosquito Ck (Nakusp), Edgewood, Mt Revelstoke, Glacier Nat Pk (Mt Fidelity)
- Cicurina intermedia* Chamberlin & Ivie
Global: Southern interior BC to UT
BC: Vernon, Vaseux Lk, "Throne" Haynes Lease EcoReserve (Osoyoos), Mt Kobau, Lakit Peak (nr Ft Steele), Sunken Ck Tr (nr Cranbrook), Sage Ck (Flathead R Valley se of Fernie), White R (nr junct of N & E White R FSRs)
- * *Cicurina robusta* Simon
Global: Southern BC to NS south to CO
BC: White Lk
- Cicurina simplex* Simon
Global: Southwestern AK south to WA & MT
BC: Lakelse Lk, Cameron Lk, Departure Bay, Sansum Narrows Reg Pk (nr Genoa Bay), Victoria area (Sidney, Sallias Is, nr Prospect Lk, Island View Beach, E Sooke Pk, Mt Braden, Discovery Is, Witty's Lagoon, Matheson Lk, Pearson College), Texada Is, S Pender Is, Gulf Islands Nat Pk (Cabbage Is, Portland Is), N Hawkins Is (nr Saltspring Is), Arrow Lk, Kootenay Pass, Ripple Ridge (Kootenay Pass), "Darkwoods" NE of Salmo (Tye Camp, Wurttemberg Mtn, Swamp Basin Rd), Evening Ridge Mt (Nelson), lower Bull R valley (E of Cranbrook), Beaver Valley (Glacier Nat Pk)
- Cicurina tersa* Simon
Global: Western BC south to OR
BC: Johnson Bay (Babine Lk), Campbell R, Parksville, Departure Bay, Sansum Narrows Reg Pk (nr Genoa Bay), Victoria area (Pearson College, Beaver Lk Pk, Goldstream Prov Pk, Francis King Reg Pk, Prospect Lk, Observatory Hill, E Sooke Pk, Langford, sw slope Mt MacDonald, Mt Braden, Mt Douglas, Sidney, Dock Is), Galiano Is, Gulf Islands Nat Pk (Bright Is, Cabbage Is, Tumbo Is), nr Saltspring Is (N & E Hawkins Is, Little Channel Is), Whistler (Brandywine Prov Pk), Highline Rd (nr Darcy)
- Dictyna alaskae* Chamberlin & Ivie
Global: Holarctic; in Nearctic - AK to NL south to northwestern MT
BC: Atlin, Hwy 97 S of Taylor
- Dictyna bostoniensis* Emerton
Global: Widespread in USA & southeastern CAN; southern interior BC
BC: Osoyoos
- Dictyna brevitarsa* Emerton
Global: AK to NF south to AZ & PA
BC: Johnson Bay (Babine Lk), Hwy 97 S of Taylor, Fernie
- Dictyna calcarata* Banks
Global: Southern interior BC south to MX & eastern OK
BC: Osoyoos
- Dictyna coloradensis* Chamberlin
Global: BC to QC south to AZ & TX
BC: Thompson R ravine below Logan Lk, Vernon, Oliver, White Lk. (southern Okanagan Valley), Edgewood, 10 km S of Donald, Idaho Pk (nr New Denver), Hixon, nr Salmon Valley, Hwy 29 NW of Ft St John, Hwy 29 @ Watson Slough, Hwy 29 @ Bear Flat, Hwy 29 NE of Hudson's Hope, nr Lemoray
- Dictyna major* Menge
Global: Holarctic; in Nearctic - AK to LB south to central CA & QC
BC: Widespread in BC
- Dictyna minuta* Emerton
Global: BC to NH south to northwestern MX & southern TX
BC: Ft Fraser, Victoria area (Witty's Lagoon, Pearson College), Salmon Arm, Vernon, Kelowna
- Dictyna subpinicola* Ivie
Global: Southern interior BC to western MT south to OR
BC: Vernon, E of Cranbrook (lower Bull R valley, Rampart grassland)

- Dictyna terrestris* Emerton
Global: Southern interior BC to NH south to NM & TX
BC: Osoyoos (unknown locale and E side Osoyoos Lk)
- Dictyna tridentata* Bishop & Ruderman
Global: BC to WY south to AZ & NM
BC: Johnson Bay (Babine Lk), Victoria
- Emblyna annulipes* (Blackwall)
Global: Holarctic; in Nearctic - AK to NF south to OR & VA
BC: Widespread in BC
- Emblyna borealis cavernosa* (Jones)
Global: Holarctic; in Nearctic - NT to NU south to CA & UT
BC: Mt Baldy, Apex Mtn, Cathedral Prov Pk (Rim Tr), Mt Kobau, Blowdown Pass (SW of Lillooet), Mission Ridge (Seton Portage), Whistler Peak, Graves Lookout Tr (E of Whiteswan Lk), Whitetooth Ridge, Yoho Nat Pk (Odaray Tr), Hwy 29 NW of Ft St John
- Emblyna chitina* (Chamberlin & Gertsch)
Global: Southeastern AK & BC, also QC & NS
BC: Meadow Mtn (Kaslo)
- Emblyna completa* (Chamberlin & Gertsch)
Global: Southern BC to ND south to CA & NM
BC: Kamloops, Apex Mtn, Vaseux Lk, Keremeos, Rock Ck
- * *Emblyna horta* (Gertsch & Ivie)
Global: South central BC to SK & S to ID
BC: Oliver (Inkameep)
- Emblyna manitoba* (Ivie)
Global: YT to NB south to OR and FL
BC: Boya Lk, N end Whitetail Lk (nr Canal Flats)
- * *Emblyna maxima* (Banks)
Global: BC to NB south to SD & TN
BC: Hwy 29 @ Halfway R
- Emblyna olympiana* (Chamberlin)
Global: Southwestern BC south to CA
BC: Wellington, S Hawkins Is (nr Saltspring Is)
- Emblyna oregona* Gertsch
Global: Southwestern BC south to CA
BC: Island View Beach (Victoria)
- Emblyna peragrata* (Bishop & Ruderman)
Global: AK to QC south to northern CA & western MT
BC: Widespread in BC
- Emblyna phylax* (Gertsch & Ivie)
Global: Southern interior BC to NF south to WY & NH
BC: Lillooet, Gang Ranch, nr Quesnel, nr Lemoray, Lumby, Summerland, Rock Ck
- Emblyna reticulata* (Gertsch & Ivie)
Global: Southern interior BC to SD south to northwestern MX and southeastern TX
BC: Walachin, Mt. Kobau, Kilpoola Lk, Mud Lk (nr Osoyoos), Osoyoos, Oliver (Manuel Flats), nr Salmon Valley
- Emblyna sublata* (Hentz)
Global: BC to LB south to eastern MX & FL
BC: Atlin, Kyuquot
- Hackmania prominula* (Tullgren)
Global: Holarctic; in Nearctic - AK to MB south to NM
BC: St Elias Mtns (59.39N 137.54W), Liard R Hot Springs, Lk O'Hara area (Lk McArthur Tr, Odaray/Grandview Tr, Opabin Plateau)
- Lathys alberta* Gertsch
Global: Holarctic; in Nearctic - AK to MB south to CO
BC: Whistler (Whistler Peak, Blackcomb Mtn), Blowdown Pass (SW of Lillooet), km 15 Highline Rd (n of Darcy), Mission Ridge (Seton Portage), Bridge/Yalakom R area, Marble Canyon, Hwy 99 @ Hat Ck Rd, Cathedral Lks Prov Pk (Glacier Lk Tr, Rim Tr), nr St Mary Lk (W of Kimberley), Findlay Ck (W of Canal Flats), Lakit Pk (Ft Steele), Graves Lookout Tr (E of Whiteswan Lk), Columbia Lk Prov Pk, Paget Pk (nr Field), Kootenay Nat Pk (Stanley Glacier Tr), Yoho Nat Pk (Takakkaw Falls), Cabin Ck FSR (Flathead R drainage), Summit Lk, Barkerville, Pink Mtn
- Lathys humilis* (Blackwall)
Global: Palaearctic; introduced to Nearctic - southwestern BC
BC: Vancouver (Stanley Pk)
- Lathys* sp. Simon
Global: Southwestern BC to northwestern Montana
BC: Cornice Ridge (Stagleap Prov Pk), Flathead Ridge (Elko), Flathead R valley (Kishenena Ck, N of Shepp Ck)
- Mallos niveus* O. P.-Cambridge
Global: Southern interior BC to CO south to Guatemala
BC: Kelowna, Summerland, Osoyoos
- Phantyna terranea* (Ivie)
Global: Southwestern BC to western WY south to OR & CO
BC: Hwy 29 20 km NW Ft St John, Island View Beach (Victoria)
- Tricholathys rothi* Chamberlin & Gertsch
Global: Southwestern BC south to western OR
BC: Comox, Island View Beach (Saanichton), Iona Beach (Richmond), Westham Island (Delta), Gulf Islands Nat Pk (Tumbo Is)
- Tricholathys* sp. Chamberlin & Ivie
Global: Southeastern BC to ...?
BC: Mt Baldy, Cornice Ridge (Stagleap Prov Pk)
- Tricholathys spiralis* Chamberlin & Ivie
Global: Southwestern BC to WY south to CA & CO
BC: Kyuquot, White Lk (southern Okanagan Valley)

Dipluridae

- Microhexura idahoana* Chamberlin & Ivie
Global: Scattered high elevation localities from southern interior BC to western MT south to central OR & ID
BC: Kootenay Pass

Dysderidae

- Dysdera crocata* C. L. Koch
Global: Nearly cosmopolitan; synanthropic
BC: Victoria area (Beacon Hill, Saxe Pt, 10 Mile Pt, Haliburton Farm, Island View Beach, Brentwood Bay, Race Rocks), Tent Is (nr Chemainus), Vancouver

Gnaphosidae

- Callilepis eremella* Chamberlin
Global: Southern BC to northern ID south to AZ & northwestern MX
BC: Summerland
- Callilepis pluto* Banks
Global: NU to NS south to WA, CO, & AL
BC: Mt Benson, Wellington, Mt Maxwell (Saltspring Is), E Hawkins Is (nr Saltspring Is), Victoria area (Prospect Lk, Island View Beach), Portland Is, Roberts Ck, Quadra Is, Edgewood, Burton, Valemount, Rampart grassland (E of Cranbrook), Bummers Flats W A (nr Ft Steele)
- Drassodes neglectus* (Keyserling)
Global: Holarctic; in Nearctic - AK to NS south to AZ & WV
BC: Widespread in BC
- Drassodes saccatus* (Emerton)
Global: Southern BC to NH south to southern MX
BC: Lillooet, Chopaka, Nighthawk, Osoyoos, Kilpoola Lk, Skaha Lk, Summerland, Keremeos
- Drassyllus depressus* (Emerton)
Global: Southern BC to NS south to AZ & VA
BC: Widespread in southern BC, Hwy 29 N of Lynx Ck

- Drassyllus dromeus* Chamberlin
Global: Southern BC to MA south to AZ and GA
BC: Mt Maxwell (Saltspring Is), Max/Madeline Lk (Penticton), Summerland, Oliver, Keremeos, Hedley, Princeton
- Drassyllus insularis* (Banks)
Global: Southern interior BC to western MX
BC: Lillooet, Bridge/Yalakom R area, Deadman Valley FSR (nr Cache Ck), Oliver, Summerland
- Drassyllus lamprus* (Chamberlin)
Global: Southern BC to southern SK south to central MX
BC: Savary Is, Mt Maxwell (Saltspring Is), Savona, nr Chopaka border crossing (49.01.157N 119.40.961W), Oliver, Summerland
- Drassyllus niger* (Banks)
Global: Southern CAN south to CA & PA
BC: nr Prospect Lk (Victoria), Mt Maxwell (Saltspring Is), S Hawkins Is (nr Saltspring Is), Gulf Islands Nat Pk (Tiny D'Arcy Is), Lillooet, Summerland, Oliver, Hwy 29 @ Lynx Ck
- Drassyllus saphes* Chamberlin
Global: Southern BC to MT south to northwestern MX
BC: Victoria (Cattle Point), Osoyoos
- Gnaphosa antipola* Chamberlin
Global: Western BC south to northern CA & western CO
BC: Skidegate, Burton, East Arrow (S of Nakusp)
- Gnaphosa borea* Kulczynski
Global: Holarctic; in Nearctic - AK to NL south to NM and New England
BC: Eastern BC along Rocky Mtns
- Gnaphosa brumalis* Thorell
Global: AK to LB south to AZ & NH
BC: Paradise Mine, Summit Lk (Alaska Hwy), other localities in Rocky Mtns, Lk O'Hara area (Lk McArthur Tr)
- Gnaphosa californica* Banks
Global: Southern BC south to CA & NM
BC: Keremeos, Summerland, Osoyoos
- Gnaphosa microps* Holm
Global: Holarctic; in Nearctic - AK to NF south to CO & ME
BC: Cathedral Lks Prov Pk (Glacier Lk Tr, Rim Tr), Sikanni Chief R, Yoho Nat Pk, Lk O'Hara area (Odayay/Grandview Tr, Opabin Plateau)
- Gnaphosa muscorum* (L. Koch)
Global: Holarctic; in Nearctic - AK to LB south to NM & WV
BC: Widespread in BC
- Gnaphosa orites* Chamberlin
Global: Holarctic; in Nearctic - AK to NL south to WY & northern New England
BC: Ft Nelson / Ft St John area
- Gnaphosa parvula* Banks
Global: AK to NF south to CO & WV
BC: Tetsa R, Ft Fraser, Copper R valley, Ft St James, Hwy 29 @ Lynx Ck, nr Prince George, Marble Canyon, Kamloops, East Arrow (S of Nakusp), Burton
- Gnaphosa snohomish* Platnick & Shadab
Global: Southwestern BC and adjacent WA
BC: Victoria (Island View Beach), Gulf Islands Nat Pk (Cabbage Is, Tumbo Is), Burnaby, Delta (Burns Bog), Haney (Malcolm Knapp Forest)
- Haplodrassus bicornis* (Emerton)
Global: BC to NS south to AZ & VA
BC: S Acland Is (nr Saltspring Is), Vernon, Westbank, White Lk, Chopaka, Keremeos
- Haplodrassus eunis* Chamberlin
Global: AK to northern ON south to CA & NM
BC: Lillooet, Manning Prov Pk, Apex Mtn, Nelson, Mt Hefty, Hwy 29 @ Halfway R, Hwy 29 NW of Ft St John
- Haplodrassus hiemalis* (Emerton)
Global: Holarctic; in Nearctic - AK to NF south to CO & NJ
BC: Copper R valley, Hwy 29 @ Watson Slough, Clearwater Valley
- Haplodrassus signifer* (C. L. Koch)
Global: Holarctic; in Nearctic - YT to NS south to MX & FL
BC: Widespread in southern BC, Copper R valley (nr Terrace)
- Herpyllus hesperolus* Chamberlin
Global: Southern BC to southern SK south to northwestern MX & adjacent TX
BC: Summerland
- Herpyllus propinquus* (Keyserling)
Global: Southern BC to MT south to central MX
BC: Osoyoos
- Micaria aenea* Thorell
Global: Holarctic; in Nearctic - AK to NF south to UT & ME
BC: Summit Lk, Lillooet, Manning Prov Pk, nr Prince George, nr Valemount (Dave Henry Ck), Bush Arm Kinbasket Lk (Hope Ck), Revelstoke, Yoho Nat Pk
- Micaria alpina* L. Koch
Global: Holarctic; in Nearctic - AK & northern BC south to northern ON
BC: Summit Lk (Alaska Hwy)
- Micaria coloradensis* Banks
Global: AK to SK south to CA & SD
BC: Apex Mtn
- Micaria constricta* Emerton
Global: Norway; YT to LB south to CA & NH
BC: Widespread in BC
- Micaria foxi* Gertsch
Global: Southern BC to southern AB south to CA & NM
BC: Summerland, E Skaha Lk (NatureTrust property), Osoyoos, S of Kilpoola Lk
- Micaria idana* Platnick & Shadab
Global: Southern BC south to CA
BC: Manning Prov Pk, Apex Mtn, White Lk
- Micaria laticeps* Emerton
Global: Southern BC to eastern ON south to AR & CT
BC: Osoyoos, White Lk, Chopaka
- Micaria longipes* Emerton
Global: Southeastern BC to NB south to AZ & MX
BC: Chopaka, White Lk, Osoyoos (Desert Centre), Koochanusa Lk
- * *Micaria longispina* Emerton
Global: South central BC to NS south to AR & FL
BC: White Lk
- Micaria pulicaria* (Sundevall)
Global: Holarctic; in Nearctic - AK to NF south to CA and TX
BC: Widespread in southern half of BC, Copper R valley
- Micaria riggsi* Gertsch
Global: Southern BC to MA south to AZ & TN
BC: Salmon Arm, Apex Mtn, Chopaka
- Micaria rossica* Thorell
Global: Holarctic; in Nearctic - AK to MB south to CA & NM
BC: Widespread in BC
- Micaria utahna* Gertsch
Global: Southern BC to MT south to CA & UT
BC: Victoria area (Beacon Hill, Island View Beach, Witty's Lagoon), nr Chopaka border crossing (49.01.157N 119.40.961W), Osoyoos
- Nodocion eclecticus* Chamberlin
Global: Southern BC south to northwestern MX and TX
BC: Summerland
- * *Nodocion mateonus* Chamberlin
Global: South central BC to southern CA
BC: Osoyoos (Desert Centre, Haynes Lease)

- Nodocion rufithoracicus* Worley
Global: Southern BC to AB south to CA & NM
BC: Victoria, Summerland, Grasmere-Dorr FSR (nr Lk Kooconusa)
- Nodocion voluntarius* (Chamberlin)
Global: Southern BC & AB south to MX
BC: Summerland
- Orodrossus canadensis* Platnick & Shadab
Global: YT to NB south to WA & SD
BC: Boya Lk, Ft Fraser, Atlin, Terrace, Forbidden Plateau, Cathedral Lks Prov Pk (Rim Tr)
- Orodrossus coloradensis* (Emerton)
Global: BC to MB south to CA & AZ
BC: Summit Lk, Cathedral Lk Prov Pk (Glacier Lk Tr), Kamloops, Radium Hotsprings, Kaslo, Granite Mtn (Rosslund), "Darkwoods" NE of Salmo (Swamp Basin Rd, Wurttemberg Mtn), Kootenay Pass, Gray Ck Pass (Crawford Bay), Lakit Pk (Ft Steele), Sale Mtn, Paget Pk (nr Field), Kootenay Nat Pk (Daer-Pitts, Stanley Glacier Tr), Flathead R drainage (Shepp Ck)
- Parasyrisca orites* (Chamberlin & Gertsch)
Global: Southwestern BC & adjacent WA
BC: Whistler (Whistler Peak, Black Tusk microwave, Beverley Lk), Blowdown Pass (SW of Lillooet), Mission Ridge (Seton Portage), Manning Prov Pk, Cathedral Lks Prov Pk (Rim Tr)
- Scotophaeus blackwalli* (Thorell)
Global: Palaearctic; introduced to Nearctic & Neotropic - southern BC south to northwestern MX & Gulf Coast USA
BC: Victoria, Salmon Arm
- Sergiolus columbianus* (Emerton)
Global: Southwestern BC to SD south to CA & AZ
BC: Comox, Departure Bay, Wellington, Victoria area (Witty's Lagoon, Goldstream Prov Pk, Langford, Island View Beach), E Hawkins Is (nr Saltspring Is), Portland Is, Roberts Ck, Princeton, Mahoney Lk (southern Okanagan Valley)
- * *Sergiolus iviei* Platnick & Shadab
Global: Southern BC & southern AB south to NV & CO
BC: scree e side Thompson R 14 km S of Ashcroft
- Sergiolus montanus* (Emerton)
Global: Southeastern AK to NB south to northwestern MX & SC
BC: Widespread in BC
- Zelotes exiguoides* Platnick & Shadab
Global: Northern BC to NH south to CO & PA
BC: Telegraph Ck, Edgewood
- Zelotes fratris* Chamberlin
Global: Holarctic; in Nearctic - AK to NF south to CA & NM
BC: Widespread in BC
- Zelotes hentzi* Barrows
Global: Southern BC to NS south to northern CA & FL
BC: Wellington, Victoria area (Harling Pt, Beacon Hill, Island View Beach, Victoria), Osoyoos (Desert Centre)
- Zelotes puritanus* Chamberlin
Global: Holarctic; in Nearctic - AK to NB south to CA & MA
BC: Widespread in southern BC, nr Prince George, Hwy 29 @ Lynx Ck
- * *Zelotes rainier* Platnick & Shadab
Global: Southwestern BC & western WA
BC: Blowdown Pass (SW of Lillooet)
- Zelotes sula* Lowrie & Gertsch
Global: Holarctic; in Nearctic - AK to LB south to UT & northern NY
BC: Manson Ck, Morley R Lodge, Summit Lk (Alaska Hwy), Manning Prov Pk

- Zelotes tuobus* Chamberlin
Global: Southern BC to KY south to CA & TN
BC: Departure Bay, Kamloops, nr Chopaka border crossing (49.01.157N 119.40.961W), Summerland, Skaha Lk, White Lk, Osoyoos (Desert Centre), Kilpoola Lk, Chopaka

Hahniidae

- Antistea brunnea* (Emerton)
Global: BC to NS south to IL & NJ
BC: Prince Rupert, Copper R valley, Enderby
- Calymmaria emertoni* (Simon)
Global: Southwestern BC to northwestern CA
BC: Kyuquot, Tofino, Union Is, Wellington, Departure Bay, Port Renfrew, Shawnigan Lk, Victoria area (E Sooke, Grassie Lk (Sooke Hills), Matheson Lk, Goldstream Prov Pk, Francis King Reg Pk, Beaver Lk), N Vancouver (Lynn Valley), Haney
- Calymmaria monicae* Chamberlin & Ivie
Global: CA, disjunct pop'n in BC?
BC: Lillooet
- Calymmaria nana* (Simon)
Global: Southwestern BC to southern OR
BC: Mt Arrowsmith, Cabin Pool (Cowichan R), Victoria area (Sooke, Pearson College, Goldstream Prov Pk, Saanich Inlet, Bear Mtn, Forrest Is), Gulf Islands Nat Pk (Cabbage Is), Whistler (Brandywine Prov Pk), Bute Inlet (Heakamie R gorge)
- Calymmaria suprema* Chamberlin & Ivie
Global: Southwestern BC to west central CA
BC: Goldstream Prov Pk
- Cryphoeca exlineae* Roth
Global: Southern AK south to western MT & central CA
BC: Widespread in BC
- Dirksia cinctipes* (Banks)
Global: Western AK to CA
BC: Widespread on coastal BC
- Ethobuella tuonops* Chamberlin & Ivie
Global: Southwestern BC to OR
BC: Carmanah Prov Pk, nr Nitinat R Prov Pk, Port Renfrew, Victoria area (Grassie Lk (Sooke Hills), Veitch Ck, Goldstream Prov Pk, Francis King Reg Pk, Observatory Hill, Witty's Lagoon, Pearson College, Rocky Point, Veitch Ck, Mt Braden, Humpback Rd), Long Harbour, Helliwell Prov Pk, Saturna Is (nr Money Lk), Galiano Is, Teaquahan R (Bute Inlet), Rose Spit (Graham Island)
- Hahnia arizonica* Chamberlin & Ivie
Global: AK south to AZ & western TX
BC: Carmanah Valley, Black Tusk microwave access road, White R (E of Whiteswan Lk Prov Pk), Hwy 29 @ Szoo Rd
- Hahnia cinerea* Emerton
Global: AK to NS south to MX & FL
BC: Prince Rupert, Bella Coola, nr Prince George, nr Valemount (Yellow Jacket Ck), Vancouver, Marble Canyon, Kamloops, Old Hedley Rd, Princeton
- Hahnia glacialis* Sorensen
Global: Holarctic; in Nearctic - AK to NH south to CO & NY
BC: Whistler (Blackcomb Mtn, Whistler Peak, Black Tusk microwave), Blowdown Pass (SW of Lillooet), Mt Cheam (nr Chilliwack), Manning Prov Pk (Paintbrush Tr), Cathedral Lks Prov Pk (Rim Tr), Beaconsfield Mtn (Penticton), Mt Baldy, "Darkwoods" NE of Salmo (Wurttemberg Mtn), Gray Ck Pass (Crawford Bay), Lakit Peak (Ft Steele), Graves Lookout Tr (E of Whiteswan Lk), Lakelse Lk (Terrace), St Elias Mtns (jct Tatshenshini & O'Connor Rivers), Mt Mackenzie, Glacier Nat Pk (Mt Fidelity, Balu Pass), Whitetooth Ridge, Yoho Nat Pk (Yoho Valley Rd, Lk O'Hara access rd, Lk McArthur Tr, Odaray/Grandview Tr,

- Opabin Plateau)
 Hahnia ononidum Simon
 Global: Holarctic; in Nearctic - YT to NU south to NM & AR
 BC: Atlin
- Neoantistea agilis (Keyserling)
 Global: Northern BC to NS south to CA & FL
 BC: Prince Rupert, Manson R, Ft St John, Edgewood
- Neoantistea gosiuta Gertsch
 Global: Northwestern BC south to AZ & NM
 BC: St Elias Mtns (59.39N 137.10W), Columbia Lk ProvPk,
 Grasmere-Dorr FSR (nr Lk Koochanusa)
- Neoantistea magna (Keyserling)
 Global: AK to NF south to CA & FL
 BC: Haida Gwaii (Mosquito Lk, Rennel Sd - Bonanza Ck), Johnson
 Bay (Babine Lk), Bute Inlet, Beverley Lk (Whistler), Jordan River bog
 (Vancouver Is), Osoyoos, E Arrow (S of Nakusp), Edgewood

Linyphiidae

- Agnyphantes arboreus (Emerton)
 Global: AK south to WA & WY
 BC: Masset, Glacier Nat Pk, Emerald Lk
- Agyneta allosubtilis Loksa
 Global: Holarctic; in Nearctic - YT to NF south to BC & MB
 BC: Roberts Ck, Copper R valley (nr Terrace), Sikanni R (Alaska
 Hwy), Liard R Hot Springs, Hwy 29 @ Watson Slough, "Darkwoods" NE
 of Salmo (lower Laib Rd)
- * Agyneta aquila Duperre
 Global: YT to northern BC
 BC: Summit Lk
- * Agyneta bucklei Duperre
 Global: Coastal BC south to OR
 BC: Terrace, Rocky Pt, Saanich Inlet
- * Agyneta danielbelangeri Duperre
 Global: BC & AB south to NM
 BC: Johnson Bay (Babine Lk), nr Valemount (Dave Henry Ck),
 Flathead R drainage (Mt Hefty, others), Kootenay Nat Pk (Stanley
 Glacier), Glacier Nat Pk (Mt Fidelity), Yoho Nat Pk (Paget Pk,
 Takakkaw Falls, Yoho Valley Rd)
- * Agyneta darrelli Duperre
 Global: Southwestern BC south to coastal central CA
 BC: Widespread on Vancouver Is
- Agyneta emertoni (Roewer)
 Global: Southwestern BC to WA
 BC: Nanaimo, Vancouver
- Agyneta fabra (Keyserling)
 Global: Southern interior BC to NB south to TX & AL
 BC: Clearwater Valley, Edgewater, Edgewood
- Agyneta fillmorana (Chamberlin)
 Global: AK to ND south to OR and WY
 BC: Widespread on southern Vancouver Is, Boya Lk, Kinaskan Lk,
 Whitetooth Ridge (nr Golden)
- * Agyneta flibuscrocus Duperre
 Global: BC, AB, & WY
 BC: "Darkwoods" NE of Salmo (Mt Wurttemberg), Whitetooth Ridge
 (nr Golden), Lakit Peak (nr Ft Steele)
- Agyneta fratrella (Chamberlin)
 Global: Southern BC and WY south to WA, and UT
 BC: Smithers, nr Cinema, Granite Mtn (Rosslund), Idaho Pk (nr New
 Denver), W side Cornice Ridge (Kootenay Pass), "Darkwoods" NE of
 Salmo (Elmo Lk Rd, Wurttemberg Mtn), Whitetooth Ridge
- * Agyneta lophophor (Chamberlin & Ivie)
 Global: AK & YT to BC & SK
 BC: Hwy 29 @ Halfway Ck, Hwy 29 20 km NW Ft St John, Ramparts
- Grassland (E of Cranbrook)
- Agyneta manni (Crawford & Edwards)
 Global: Southwestern BC & northwestern WA
 BC: Mt Arrowsmith, Whistler Pk, Black Tusk microwave, Mission Ridge
 (Seton Portage), Blowdown Pass (SW of Lillooet), Mt Cheam (nr
 Chilliwack)
- * Agyneta maritima (Emerton)
 Global: YT & NU to southeastern BC
 BC: Whistler Peak (Whistler)
- * Agyneta nigripes (Simon)
 Global: Holarctic; in Nearctic - NU, BC, & QC
 BC: Gray Ck Pass (SW of Crawford Bay), Darkwoods (Wurttemberg
 Mtn), Flathead Valley (Butts Rec Site)
- Agyneta olivacea (Emerton)
 Global: Holarctic; in Nearctic - YT to NF south to ND & NH
 BC: Mt Cain (Vancouver Is), Vernon, nr Prince George, Hwy 29 @
 Szoo Rd, S of Taylor, Tumbler Ridge, Bush Arm Kinbasket Lk (Good
 Fellow Ck)
- Agyneta ordinaria (Chamberlin & Ivie)
 Global: AK to MT
 BC: Whistler (Alpha Lk), Manning Prov Pk, Mt Cain, 25 km se Vernon,
 Idaho Pk, Pinkut Ck (Babine Lk), Terrace, Lakit Pk (nr Ft Steele), Yoho
 Nat Pk (jct Yoho & Kicking Horse Rivers)
- * Agyneta perspicua Duperre
 Global: Southern AK to AB south to OR & MT
 BC: Mt Cain, McDonnell FSR (nr Smithers), Cottonwood R @ Hwy 37,
 Cross Ck (nr Babine Lk), Yoho Nat Pk (Boulder Ck, jct Yoho & Kicking
 Horse Rivers, Lk O'Hara access rd)
- Agyneta protrudens (Chamberlin & Ivie)
 Global: Southern BC to SK south to UT
 BC: Carmanah Valley, nr Port Renfrew (Avatar Grove, Harris Ck
 spruce), Mt Cain, Victoria (10 Mile Pt), Yellow Point, Mt Kobau,
 Johnson Bay (Babine Lk), nr Prince George, Valemount area
 (peatland, Yellow Jacket Ck)
- Agyneta simplex (Emerton)
 Global: AK to NS south to NM & MA
 BC: Widespread in BC
- * Agyneta uta (Chamberlin)
 Global: Southwestern BC south to CA & NM
 BC: saddle btwn Mt Cokely & Mt Arrowsmith
- * Agyneta watertoni Duperre
 Global: Southeastern BC and southwestern AB
 BC: uncertain locality
- Allomengea dentisetis (Grube)
 Global: Holarctic; in Nearctic - AK to NF south to CO & NJ
 BC: Clearwater Valley
- Aphileta microtarsa (Emerton)
 Global: BC to NF south to UT & NY
 BC: Johnson Bay & Donald Landing (Babine Lk), Copper R valley (nr
 Terrace), Manning Prov Pk, Glacier Nat Pk (Mt Fidelity), Yoho Nat Pk
 (Takakkaw Falls, Opabin Plateau)
- Aphileta misera (O. P.-Cambridge)
 Global: Holarctic; in Nearctic - AK to QC south to BC & NY
 BC: Wap Lk (Revelstoke)
- Arcuphantes arcuatulus (Roewer)
 Global: Southwestern BC to OR
 BC: Carmanah Ck, Parksville, Greenburn Lk (S Pender Is), Clam Bay
 Tr (N Pender Is), Durrance Lk. (Victoria), N Hawkins Is (nr Salt Spring
 Is), Big Red Is, Gulf Islands Nat Pk (Acland Is), Saturna Is (nr Money
 Lk)

- Arcuphantes sylvaticus* Chamberlin & Ivie
Global: BC to CA
BC: Whistler (Brandywine Prov Pk), Highline Rd (nr Darcy), Blowdown FSR (SW of Lillooet), 16 km W of Barkerville, Vernon (Campbell Brown Ecol Reserve), McIntyre Rd bluffs (Vaseux Lk), Princeton, Hedley, Pend d'Oreille Valley, "Darkwoods" NE of Salmo (nr Porcupine Lk, Mt Wurttemberg, Swamp Basin Rd), Waldie Lk (Salmo), Cornice Ridge & Ripple Ridge (Kootenay Pass), St Marys Lk (Kimberly), Lakit Peak (Ft Steele), Mt Revelstoke, Yoho Nat Pk (Opabin Plateau)
- Baryphyma trifrons* (O. P.-Cambridge)
Global: Holarctic; in Nearctic - YT to QC south to WA & NY
BC: Atlin, Letain Lk (Stikine), Hwy 29 @ Halfway Ck, Hwy 29 @ Watson Slough, Mt Wurttemberg ("Darkwoods" NE of Salmo)
- Bathyphantes alameda* Ivie
Global: Southwestern BC to CA
BC: Kyuquot
- Bathyphantes alascensis* (Banks)
Global: AK south to CA
BC: Bute Inlet, Brooks Peninsula, Kyuquot, Tofino, Schooner Cove (nr Tofino), Wellington, Victoria area (Matheson Lk), Texada Is, Whistler (Rainbow Lk Tr), Cathedral Lks Prov Pk (Rim Tr), Granite Mtn (Rossland), "Darkwoods" NE of Salmo (nr Porcupine Lk), nr Prince George, Rogers Pass, Sale Mtn, Yoho Nat Pk (jct Yoho & Kicking Horse Rivers, Yoho Valley Rd), Copper R valley
- Bathyphantes brevipes* (Emerton)
Global: AK to NF south to CA & WY
BC: Widespread in BC
- * *Bathyphantes brevis* (Emerton)
Global: AK to NF south to northern USA
BC: unknown localities, specimens presumably at CNC
- Bathyphantes canadensis* (Emerton)
Global: Holarctic; in Nearctic - AK to QC south to BC & NY
BC: Johnson Bay (Babine Lk), Ft Fraser, S of Taylor
- Bathyphantes diasosnemis* Fage
Global: Southwestern BC to CA
BC: Mt Cain (Vancouver Is)
- * *Bathyphantes eumenis* (L. Koch)
Global: Holarctic; in Nearctic - AK to NL south to northern BC & ON
BC: Heart Lk (nr Dease Lk), Driftwood Ck (nr Smithers)
- Bathyphantes keeni* (Emerton)
Global: AK south to CA
BC: Widespread on coastal BC
- Bathyphantes malkini* Ivie
Global: Southwestern BC south to CA
BC: Wellington
- Bathyphantes orica* Ivie
Global: Southwestern BC south to CA
BC: Wellington, Victoria area (Pearson College, Witty's Lagoon, Haliburton Farm), Big Red Is, Forrest Is (nr Sidney), Long Harbour, Tent Is (nr Chemainus), Gulf Islands Nat Pk (Big D'Arcy Is, Portland Is), Texada Is, Vancouver, Waldie Lk (Salmo)
- Bathyphantes pallidus* (Banks)
Global: AK to NF south to AZ & NC
BC: Widespread in BC
- Bathyphantes reprobus* (Kulczynski)
Global: Holarctic; in Nearctic - AK to QC south to northeastern BC & NY
BC: Ft St John
- Bathyphantes waneta* Ivie
Global: BC south to OR & ID
BC: Victoria area (Island View Beach), Merritt, Vernon, Summerland, Apex Mountain, Vaseux Lake, Idaho Pk (nr New Denver)
- Centromerita bicolor* (Blackwall)
Global: Palaearctic; introduced in Nearctic - BC to WA, NF to NS
BC: Burnaby, Surrey, Delta, Forrest Is (Sidney), Gulf Islands Nat Pk (Portland Is)
- Centromerus longibulbus* (Emerton)
Global: BC to NF south to MI & NY
BC: Enderby, Lumby, Cherryville, Arrow Lk, Beaton, nr Prince George, Cornice Ridge (Kootenay Pass)
- Centromerus sylvaticus* (Blackwall)
Global: Holarctic; in Nearctic - AK to NL and south to MN & NY
BC: Vancouver
- Ceraticelus atriceps* (O. P.-Cambridge)
Global: YT to NF south to WA & NY
BC: Atlin, Ft Fraser, nr Salmon Valley, Hixon, Comox, Burns Bog (Delta), Coquihalla Lks, Enderby, Sale Mtn, Mt Mackenzie, Mt Revelstoke, Yoho Nat Pk (Boulder Ck Ranger Sta, Field, Takakkaw Falls, Opabin Plateau, Emerald Lk)
- Ceraticelus crassiceps* Chamberlin & Ivie
Global: AK to LB south to NM
BC: Osoyoos
- Ceraticelus fissiceps* (O. P.-Cambridge)
Global: AK to NF south to WA & GA
BC: Strathcona Prov Pk (Cream Lk), Whistler (Brandywine Prov Pk), Lillooet, Hope, Salmon Arm, Vernon, Wells Gray Prov Pk, Ft Fraser, nr Prince George, nr Vanderhoof, Hixon, Edgewood, Mount Revelstoke Nat Pk, Yoho Nat Pk (nr Wapta Falls, Boulder Ck Ranger Sta, Emerald Lk), Kootenay Nat Pk (Daer-Pitts)
- Ceraticelus laetabilis* (O. P.-Cambridge)
Global: BC to NF south to MO and NC
BC: nr Prince George
- Ceraticelus minutus* (Emerton)
Global: BC; MB to QC south to MO & GA
BC: Mt Baldy
- Ceraticelus rowensis* Levi & Levi
Global: AK south to AB & WA
BC: Kingfisher Ck, Enderby, Whitetooth Ridge
- Ceraticelus silus* Dondale
Global: AK south to BC
BC: Vancouver
- Ceratinella acerea* Chamberlin & Ivie
Global: BC south to OR & UT
BC: Pinkut Ck, Edgewood, Whistler (Rainbow Lk Trail), Nanaimo (Yellow Point), Sansum Narrows Reg Pk (nr Genoa Bay), Victoria area (Rocky Pt, Pearson College, Mt Braden, Sugarloaf Mtn, Veitch Ck, Witty's Lagoon, Durrance Lake, Observatory Hill, Jocelyn Hill, Goldstream Prov Pk, Beaver Lk Reg Pk), Big Red Is, N Hawkins Is (nr Saltspring Is), Long Harbour, Gulf Islands Nat Pk (Cabbage Is), Saturna Is (nr Money Lk)
- Ceratinella alaskae* Chamberlin & Ivie
Global: Holarctic; in Nearctic - AK & BC to QC
BC: Pinkut Ck, Victoria area (Durrance Lk, Goldstream Prov Pk, Rocky Pt), Tent Is (nr Chemainus), "Darkwoods" NE of Salmo (Tye Rd, Elmo Lk Rd), E of Glacier Nat Pk
- Ceratinella brunnea* Emerton
Global: AK to NF south to NM & VA
BC: Tetsa R (Alaska Hwy), Liard Hot Springs, Copper R (Terrace), nr Prince George, Beaton, Edgewood, Gulf Islands Nat Pk (Bright Is), Blackwall Pk (Manning Prov Pk), "Darkwoods" NE of Salmo (Porcupine FSR), Kootenay Nat Pk (Stanley Glacier Tr), Yoho Nat Pk (Paget Pk, Yoho Valley Rd)

- Ceratinella ornata* alaskana Chamberlin
Global: AK to YT south to BC
BC: Tetsa River (Alaska Hwy), Waldie Lk (Salmo), E of east entrance to Glacier Nat Pk, Carmanah Valley
- Ceratinella parvula* (Fox)
Global: BC to QC south to WA & NY
BC: Little Qualicum R, Delta, nr Vanderhoof
- Ceratinella tigana* Chamberlin
Global: AK south to WA
BC: Pinkut Ck, Victoria area (nr Prospect Lk)
- Ceratinops inflatus* (Emerton)
Global: AK south to WA
BC: Widespread in western BC, "Darkwoods" NE of Salmo (Tye Rd), Glacier Nat Pk (Rogers Pass, Beaver Valley)
- Cnephalocotes obscurus* (Blackwall)
Global: Holarctic; in Nearctic - YT & northern BC to QC
BC: Copper R (Terrace)
- Collinsia ksenia* (Crosby & Bishop)
Global: AK south to WA & MT
BC: Widespread in BC
- Collinsia plumosa* (Emerton)
Global: BC to NS south to NM & NY
BC: Comox, Edgewood
- Colonus siou* Chamberlin
Global: Southern BC to QC south to MT & MA
BC: Chopaka, Mt Kobau, Kilpoola Lk
- Coreorgonal bicornis* (Emerton)
Global: S AK, BC, & WA
BC: Terrace, Copper R (Terrace), Granite Mtn (Rossland)
- Coreorgonal monoceros* (Simon)
Global: BC south to OR
BC: Parksville, saddle btwn Mt Cokely & Mt Arrowsmith, Sidney, Victoria area (Island View Beach), Big Red Is, Sydney Is, Gulf Islands Nat Pk (Big D'Arcy Is), Roberts Ck, Bute Inlet, Cathedral Lks Prov Pk (Glacier Lk Tr, Rim Tr), Mt Kobau, Mt Baldy, Mosquito Ck (nr Nakusp), Whitetooth Ridge (nr Golden)
- Coreorgonal petulcus* (Millidge)
Global: Southwestern BC & adjacent WA
BC: Victoria area (Rocky Point, Pearson College), Mt Kobau
- Diplocentria bidentata* (Emerton)
Global: Holarctic; in Nearctic - AK to NF south to UT & NY
BC: Widespread in northwestern BC; nr Lemoray, west of Ft St John, Hwy 29 @ Watson Slough, S of Taylor, Tumbler Ridge, nr Cinema, Marble Canyon, nr E entrance to Glacier Nat Pk, Yoho Nat Pk (Boulder Ck Ranger Sta, Lk O'Hara access rd, jct Yoho & Kicking Horse Rivers, Emerald Lk), E of Whiteswan Lk Prov Pk (Graves Lookout Tr, White R), Bull River valley (NW of Elkford)
- Diplocentria perplexa* (Chamberlin & Ivie)
Global: YT to QC south to UT
BC: Sikanni Chief R, Manning Prov Pk, Graves Lookout Trail (E of Canal Flats)
- Diplocentria rectangulata* (Emerton)
Global: Holarctic; in Nearctic - YT to NB south to BC & NY
BC: Hwy 37 @ Needlepoint Mtn, along Alaska Hwy (Tetsa R, Sikanni Chief R, Summit Lk), S of Taylor, Tumbler Ridge, Bull R valley (NW of Elkford), Yoho Nat Pk (jct Yoho & Kicking Horse Rivers)
- * *Diplocephalus cristatus* (Blackwall)
Global: Holarctic, NZ & Falklands; in Nearctic southeastern BC to NL south to WI and ME
BC: Kicking Horse R @ Field
- Diplocephalus sphagnicola* Eskov
Global: Holarctic; in Nearctic - NT to northern BC
BC: Summit Lake (Alaska Hwy)
- Diplocephalus subrostratus* (O. P.-Cambridge)
Global: Holarctic; in Nearctic - AK to NF south to WA & NY
BC: Boya Lk, Johnson Bay (Babine Lk), Liard R Hotsprings, Hwy 29 @ Szoo Rd, 10 Mile Lk (Quesnel)
- Diplostyla concolor* (Wider)
Global: Holarctic; in Nearctic - BC to QC south to OR & NJ
BC: Portland Is, Kitimat, Vancouver area (Iona Beach, Richmond, Colony Farm), Vernon, Summerland, Mosquito Ck (nr Nakusp), nr Salmon Valley, Field (shoreline)
- * *Disembolus convolutus* Millidge
Global: Southern BC & OR
BC: Osoyoos (Haynes Lease Eco Res, East Bench)
- * *Disembolus hyalinus* Millidge
Global: Southeastern BC & southwestern AB
BC: Lk O'Hara area (Opabin Plateau area)
- * *Disembolus* sp. Chamberlin & Ivie
Global: Southwestern AB & southeastern BC
BC: Gray Ck Pass (nr Crawford Bay), Kootenay Nat Pk (Stanley Glacier Tr)
- Dismodicus alticeps* Chamberlin & Ivie
Global: Holarctic; in Nearctic - AK & BC to NF
BC: Atlin, Little Prairie Lk, Liard R Hotsprings, S of Taylor, Yoho Nat Pk (nr Wapta Falls)
- Dismodicus decemoculatus* (Emerton)
Global: BC to NF south to WY & NY
BC: Terrace, E of Smithers, Johnson Bay (Babine Lk), Hwy 29 @ Watson Slough
- Drapetisca alteranda* Chamberlin
Global: AK to NB south to WA & CT
BC: Boya Lk, Cowichan Lk, Vancouver, Vancouver (Stanley Pk & unknown loc), Yoho Nat Pk (nr Wapta Falls)
- Entelecara acuminata* (Wider)
Global: Holarctic; in Nearctic - southwestern BC & WA
BC: Pitt Meadows
- Entelecara sombra* (Chamberlin & Ivie)
Global: Holarctic; in Nearctic - AK to QC south to WA
BC: Atlin, Johnson Bay (Babine Lk), Lillooet, Burnaby, Yoho Nat Pk (Lk McArthur Tr)
- Erigone aletris* Crosby & Bishop
Global: Holarctic; in Nearctic - AK to NF south to CA & NY
BC: Ft Fraser, Hwy 29 @ Watson Slough, Comox, Victoria, Saanich, Saanichton, Gulf Islands Nat Pk (Bright Is, Cabbage Is), Sallas Is (nr Sidney Is), Savary Is, Vancouver area (Iona Beach, Vancouver), Whistler Peak, Hope, Salmon Arm, Beaconsfield Mtn, Osoyoos (E Bench), Kootenay Pass, Burton, East Arrow (S of Nakusp), jct E & N White R FSRs (E of Whiteswan Lk)
- Erigone alsaida* Crosby & Bishop
Global: AK to QC south to WY & OH
BC: Babine Lake
- Erigone arctica* Chamberlin & Ivie
Global: Holarctic; in Nearctic - AK and N BC
BC: Summit Lk
- Erigone arctophylacis* Crosby & Bishop
Global: Holarctic; in Nearctic - YT to NT south to WA
BC: Summit Lake (Alaska Hwy), Glacier Nat Pk (Bald Ridge)
- Erigone atra* Blackwall
Global: Holarctic; in Nearctic - AK to NF south to BC & PA
BC: Summit Lk (Alaska Hwy), Ladner, Brandywine Prov Pk, Saanich

- Erigone blaesae* Crosby & Bishop
Global: Holarctic; in Nearctic - AK to NF south to WA & NJ
BC: Kamloops, Osoyoos, East Arrow (S of Nakusp), Edgewood, Burton
- Erigone capra* Simon
Global: Holarctic; in Nearctic - AK south to WA.
BC: Widespread in southwestern BC
- Erigone cristatopalpus* Simon
Global: AK to QC south to WA & NY
BC: Whistler Peak (Whistler), Cathedral Prov Pk, Gulf Islands Nat Pk (Cabbage Is), Ripple Ridge (Kootenay Pass), jct E & N White R FSRs (E of Whiteswan Lk), Yoho Nat Pk (Opabin Plateau, Emerald Lk)
- Erigone dentigera* O. P.-Cambridge
Global: NT to NF south to CO & NJ
BC: Terrace, Copper R valley (nr Terrace), Johnson Bay (Babine Lk), Hwy 29 @ Watson Slough, Bush Arm Kinbasket Lk (Good Fellow Ck, causeway), Arrow Lk, Vancouver area (Vancouver, Burnaby, Colony Farm), Gulf Islands Nat Pk (Cabbage Is), Beaton, Burton, Edgewood
- Erigone dentosa* O. P.-Cambridge
Global: BC to WY south to Guatemala
BC: Mt Kobau, East Arrow (S of Nakusp), Beaton, Burton, Edgewood, Evening Ridge Mtn (nr Nelson)
- Erigone paradisiicola* Crosby & Bishop
Global: BC south to WA
BC: Glacier Nat Pk
- Erigone psychrophila* Thorell
Global: Holarctic; in Nearctic - AK to Greenland south to BC & MB
BC: Wickaninnish, Burnaby, Haney
- * *Erigonoploides* sp. Eskov
Global: BC & WA
BC: Mt Arrowsmith, Prospect Lk (Victoria), Black Tusk microwave, Beverley Lk (Whistler)
- Estrandia grandaeva* (Keyserling)
Global: Holarctic; in Nearctic - AK to NF south to BC & NC
BC: Tanglechain Lk, Johnson Bay (Babine Lk), Liard R Hot Springs, Summit Lk (Alaska Hwy)
- Eulaira arctoa* Holm
Global: AK to BC
BC: Salmon Glacier Summit (56.1694N 130.0497W), Copper R valley (nr Terrace), Victoria area (Island View Beach), Gulf Islands Nat Pk (Portland Is, Big D'Arcy Is)
- Eulaira chelata* Chamberlin & Ivie
Global: BC & AB south to UT
BC: Smithers, Copper R valley (nr Terrace)
- Eulaira dela* Chamberlin & Ivie
Global: BC south to UT
BC: Widespread in southern BC
- * *Eulaira obscura* Chamberlin & Ivie
Global: BC & AB to ID & MT
BC: Black Tusk microwave, Beverley Lk, Blowdown Pass (SW of Lillooet), Mt Cheam (nr Chilliwack), Mt Baldy, Yoho Nat Pk (nr Wapta Falls, Paget Pk, Oday/Grandview Tr, Yoho Valley Rd, Lk McArthur Tr), Kootenay Nat Pk (Stanley Glacier Tr)
- Eulaira simplex* (Chamberlin)
Global: BC south to UT & CO
BC: Terrace
- Frederickus coylei* Paquin Et Al.
Global: Southwestern BC to mid-coastal CA
BC: Burnaby, Carmanah Valley, Tsitika R, Kyuquot, Cowichan Lake, Tent Is (nr Chemainus), Victoria area (Ayum Ck, Veitch Ck, Rocky Pt, Matheson Lk, Witty's Lagoon, Sugarloaf Mtn, Mystic Vale, Island View Beach, Beaver Lk Reg Pk, Observatory Hill), Forrest Is (Sidney), nr Prevost Is (Big Red Is, Glenthorne Is), Gulf Islands Nat Pk (Big D'Arcy Is, Cabbage Is, Tumbo Is), Yellow Point
- Frederickus wilburi* (Levi & Levi)
Global: Southern BC and adjacent AB south to central OR & northwestern MT
BC: Mt Arrowsmith, Mission Ridge (Seton Portage), Blackwall Peak (Manning Prov Pk), Granite Mtn (Rossland), Idaho Pk (nr New Denver), "Darkwoods" NE of Salmo (Swamp Basin Rd, Mt Wurttemberg), Waldie Lk (Salmo), Ripple Ridge (Kootenay Pass), Gray Ck Pass (Crawford Bay), Sale Mtn, Mt Mackenzie, Mt Fidelity, Whitetooth Ridge
- Frontinella communis* (Hentz)
Global: Widespread in Nearctic, Caribbean, and Central America
BC: Jackfish Ck, Summit Lk (Alaska Hwy), Hwy 29 NE of Hudson's Hope, Hwy 29 @ Watson Slough, Riske Ck, Vernon, Enderby, Creston
- Glyphesis idahoanus* (Chamberlin)
Global: Southern interior BC to QC south to ID
BC: Oliver
- Glyphesis scopulifer* (Emerton)
Global: NT to NF south to WA and NY
BC: Beaton
- Gnathonarium suppositum* (Kulczynski)
Global: Holarctic; in Nearctic - AK to YT south to BC & SK
BC: Widespread in northern and central BC south to Kamloops
- * *Gnathonarium taczanowskii* (O. P.-Cambridge)
Global: Holarctic; in Nearctic - AK & YT to BC
BC: Lakelse, Smithers Landing (Babine Lk)
- Gonatium crassipalpus* Bryant
Global: AK to LB south to CO & TN
BC: Sikanni Chief R, Wells Gray Prov Pk
- Grammonota angusta* Dondale
Global: YT to NF south to BC & NY
BC: nr Vanderhoof, Liard R Hot Springs
- Grammonota gentilis* Banks
Global: Southern BC to NF south to MX and OH
BC: Burton
- Grammonota gigas* (Banks)
Global: BC to NF south to WA & NY
BC: Enderby, nr Prince George
- Grammonota kincaidi* (Banks)
Global: Southwestern BC to WA
BC: Victoria area (nr Prospect Lk, Beaver Lk, Ten Mile Pt, Saanich, Witty's Lagoon, E Sooke Pk), Sansum Narrows Reg Pk (nr Genoa Bay), Vancouver area (Burnaby, Stanley Pk.), Hwy 29 @ Bear Flat
- Grammonota vittata* Barrows
Global: Southwestern BC to NF south to WI & NJ
BC: E of Strathcona Prov Pk
- Helophora insignis* (Blackwall)
Global: Holarctic; in Nearctic - AK to NF south to UT & NJ
BC: Clearwater Valley, Liard R Hot Springs, Smithers Landing (Babine Lk), Yoho Nat Pk (Field (shoreline), nr Wapta Falls)
- Helophora reducta* (Keyserling)
Global: AK south to OR
BC: Kinaskan Lk, Tanglechain Lk, Seeley Lk, Masset, Terrace, Metlakatla, Victoria area (Wittys Lagoon, Pearson College, Rocky Point), N & S Hawkins Is. (nr Salt Spring Is), Vancouver, Vernon, Penticton, Flathead R drainage (Flathead-Sage FSR)
- Helophora tunagyna* Chamberlin & Ivie
Global: Southern interior BC and ID
BC: Vernon, Penticton, Oliver, Osoyoos (E Bench), Mt Kobau

- Hilaira herniosa* (Thorell)
Global: Holarctic; in Nearctic - AK to Greenland south to BC & NY
BC: Dease Lk, Sikanni Chief R, Tetsa R, Lk O'Hara access rd
- Horcotes quadricristatus* (Emerton)
Global: YT to Greenland south to AZ & NY
BC: Summit Lk (Alaska Hwy)
- Hybauchenidium cymbadentatum* (Crosby & Bishop)
Global: Southern interior BC to QC south to WA & NY
BC: Gulf Islands Nat Pk. (Portland Is), Clearwater Valley, Edgewood
- Hybauchenidium gibbosum* (Sorensen)
Global: Holarctic; in Nearctic - AK to Greenland south to UT
BC: Alaska Hwy (17 km S of Sikanni R, Tetsa R, Summit Lk), Pine Pass
- Hypomma marxi* (Keyserling)
Global: BC to NF south to WA & NY
BC: Summit Lk (Alaska Hwy), Nanaimo, Sydney
- Hypomma subarcticum* Chamberlin & Ivie
Global: AK to NT south to BC
BC: Summit Lk (Alaska Hwy)
- Hypselistes florens* (O. P.-Cambridge)
Global: Holarctic; in Nearctic - AK to NS south to WA & VA
BC: Widespread in northern BC; Hixon
- * *Hypselistes jacksoni* (O. Pickard-Cambridge)
Global: Holarctic; in Nearctic - AK & BC to SK
BC: Mt Cheam (nr Chilliwack)
- Impropantes complicatus* (Emerton)
Global: Holarctic; in Nearctic - AK to Greenland south to WA & NY
BC: Tanglechain Lk, Dease Lk, Hwy 29 @ Halfway Ck, Copper R valley, Terrace, Blowdown Pass (SW of Lillooet), Marble Canyon, Cathedral Lks Prov Pk (Glacier Lk Tr), Beaconsfield Mtn (Penticton), "Darkwoods" NE of Salmo (lower Laib Rd), Lakit Peak (nr Ft Steele), Graves Lookout Tr (E of Whiteswan Lk), Bull R valley (NW of Elkford), Balu Pass, Mt Mackenzie, Whitetooth Ridge, Lk O'Hara area (access rd, Odaray/Grandview Tr, Opabin Plateau), Stanley Glacier Tr (Kootenay Nat Pk)
- Incestophantes duplicatus* (Emerton)
Global: AK to NF south to BC & ME
BC: Boya Lk, Tanglechain Lk, Kinaskan Lk, Pinkut Ck, Black Tusk microwave
- Incestophantes lamprus* (Chamberlin)
Global: BC to AB south to UT & WY
BC: Whistler (Whistler Peak, Blackcomb Mtn, Black Tusk microwave, Beverley Lk), Mission Ridge (Seton Portage), Blowdown Pass (SW of Lillooet), Mt Cheam (nr Chilliwack), Blackwall Peak (Manning Prov Pk), Cathedral Lks Prov Pk (Rim Tr), Beaconsfield Mtn (Penticton), Mt Kobau, Mt Baldy, Granite Mtn (Rossland), Idaho Pk (nr New Denver), "Darkwoods" NE of Salmo (Swamp Basin Rd, Wurttemberg Mtn), Kootenay Pass (Stagleap Prov Pk, Ripple Ridge), Gray Ck Pass (Crawford Bay), Lakit Peak (Ft Steele), Graves Lookout Tr (E of Whiteswan Lk), Mt Mackenzie, Mt Revelstoke, Balu Pass, Beaver Valley (Glacier Nat Pk), Whitetooth Ridge, Paget Pk (nr Field), Lk O'Hara area (Odaray/Grandview Tr), Stanley Glacier Tr (Kootenay Nat Pk)
- Incestophantes mercedes* (Chamberlin & Ivie)
Global: Southwestern BC south to CA & NV
BC: Mt Washington ski area, saddle btwn Mt Cokely & Mt Arrowsmith, Mt. Cain, Manning Prov Pk, Coquihalla Lks, "Darkwoods" ne of Salmo (lower Laib Rd), Gray Ck Pass (Crawford Bay)
- Incestophantes washingtoni* (Zorsch)
Global: AK to LB south to CO & NY
BC: Kinaskan Lk, along Alaska Hwy. (17.5 mi S of Sikanni R, Pink Mtn), Cathedral Lks Prov Pk (Glacier Lk Tr), Sale Mtn, Mt Revelstoke, Mt Mackenzie, Yoho Nat Pk (Odaray Tr)
- * *Islandiana cristata* Eskov
Global: Holarctic; in Nearctic - YT & BC
BC: Lakit Peak (Ft Steele), Mt Mackenzie, Mt Revelstoke, Balu Pass, Whitetooth Ridge, Yoho Nat Pk (Yoho Valley Rd, Odaray/Grandview Tr, Opabin Plateau), Kootenay Nat Pk (Stanley Glacier Tr)
- Islandiana falsifica* (Keyserling)
Global: Holarctic; in Nearctic - AK to NT south to BC
BC: Summit Lk (Alaska Hwy), Whistler Peak, Mission Ridge (Seton Portage), Lk O'Hara area (Odaray/Grandview Tr)
- Islandiana flaveola* (Banks)
Global: BC to QC south to AZ & AR
BC: Terrace, Cornice Ridge (Kootenay Pass), Burton, "Darkwoods" NE of Salmo (Porcupine FSR)
- Islandiana holmi* Ivie
Global: BC to QC and south to CO and NY
BC: Pink Mtn, Yoho Nat Pk (Opabin Plateau)
- * *Islandiana princeps* Braendegaard
Global: AK to NL south to WA & NY plus Greenland, Iceland,
BC: Whistler Peak (Whistler)
- Kaestneria pullata* (O. P.-Cambridge)
Global: Holarctic; in Nearctic - AK to NT south to BC & CO
BC: Johnson Bay (Babine Lk), Clearwater Valley, Beaton
- Kaestneria rufula* (Hackman)
Global: BC to NF south to PA & NJ
BC: Babine Lk (Johnson Bay), Hwy 29 NW of Ft St John
- Lepthyphantes alpinus* (Emerton)
Global: Holarctic; in Nearctic - AK to NF south to CO & NH
BC: Boya Lk, Hwy 37 @ Needlepoint Mtn, Tanglechain Lk, Copper R valley (nr Terrace), Babine Lk (Johnson Bay), Moosehorn Lk (57.34N, 127.12W), Hwy 29 @ Halfway Ck, nr Hudson's Hope, Tumbler Ridge, nr Valemount (Dave Henry Ck, Yellow Jacket Ck), Yoho Nat Pk (Boulder Ck Ranger Sta, Paget Pk)
- Lepthyphantes chamberlini* Schenkel
Global: BC & AB
BC: Johnson Bay (Babine Lk), Pink Mtn (Alaska Hwy)
- Lepthyphantes furcillifer* Chamberlin & Ivie
Global: BC to MT south to UT & WY
BC: Blowdown FSR (SW of Lillooet), Bridge/Yalakom R area, Marble Canyon, "Darkwoods" NE of Salmo (km 30 Tye Rd, km 31.5 Porcupine FSR), Waldie Lk (nr Salmo), St Mary Lk (nr Kimberley), Sunken Ck Tr (nr Cranbrook), Graves Lookout Tr (E of Whiteswan Lk.), Fernie, Flathead R drainage (Cabin Ck FSR, Mt Hefty), Beaver Valley (Glacier Nat Pk), jct Yoho & Kicking Horse Rivers (Yoho Nat Pk), Stanley Glacier Tr (Kootenay Nat Pk)
- Lepthyphantes intricatus* (Emerton)
Global: AK to NS south to NM & NY
BC: Gulf Islands Nat Pk (Cabbage Is), Johnson Bay (Babine Lk), Pinkut Ck, Halfway Ck @ Peace R, nr Prince George, Kamloops, Vernon, Lumby, Mt Kobau, Cherryville, Beaton, Granite Mtn (Rossland), "Darkwoods" NE of Salmo (Tye Camp, Elmo Rd, Swamp Basin Rd), Ripple Ridge (Kootenay Pass), Gray Ck Pass (Crawford Bay), Graves Lookout Tr (E of Whiteswan Lk), Cranbrook area (Rampart grassland, Sunken Ck Tr), White R (nr junct of N and E White R FSRs), Kinbasket Lk Bush Arm (Hope Ck), Revelstoke, Mt Revelstoke, Glacier Nat Pk (nr east entrance, Beaver Valley), Yoho Nat Pk (Yoho Valley Rd, Paget Pk)
- Lepthyphantes leprosus* (Ohlert)
Global: Palaearctic; introduced in Nearctic - southern interior BC to NS south to WA & TN
BC: Victoria, Summerland, "Darkwoods" NE of Salmo (railway tunnel nr Tye Camp)

- Lepthyphantes rainieri* Emerton
Global: S BC & AB south to WA & CO
BC: Cathedral Lks Prov Pk (Scout Lk, Glacier Lk Tr), Granite Mtn (Rossland), Graves Lookout Tr (E of Whiteswan Lk), Yoho Nat Pk (McArthur Lk Tr, Opabin Plateau), Babine Lk, Pink Mtn
- Lepthyphantes turbatrix* (O. P.-Cambridge)
Global: BC to NF south to NM & NY
BC: Johnson Bay (Babine Lk), Summit Lk. (Alaska Hwy.), Hwy 29 @ Halfway R, Hwy 29 @ Watson Slough, Hwy 29 NW of St St John, Hwy 29 NE of Hudsons Hope
- Lessertia denticelalis* (Simon)
Global: Palaeartic; introduced in Nearctic - southwestern BC
BC: Victoria
- Linyphantes aeronauticus* (Petrunkevitch)
Global: Southern BC south to CA & UT
BC: Victoria, Metchosin, Gulf Islands Nat Pk (Portland Is), Vancouver, Richmond (Boundary Bay), Summerland
- Linyphantes anacortes* Chamberlin & Ivie
Global: Southwestern BC south to CA
BC: Victoria area (nr Prospect Lk, Beaver Lk Reg Pk, 10 km W of Sooke, Rocky Pt), E Hawkins Is (nr Saltspring Is), Gulf Is Nat Pk (Big D'Arcy Is)
- Linyphantes nehalem* Chamberlin & Ivie
Global: Southwestern BC south to OR
BC: Burnaby Mountain, Sumas, Surrey Bend Reg Pk (Surrey), Westham Is (Delta), Forrest Is (Sidney), Gulf Islands Nat Pk (Portland Is), Sansum Narrows Reg Pk
- Linyphantes nigrescens* Chamberlin & Ivie
Global: Southwestern BC south to CA
BC: Cowichan Lk
- Linyphantes orcinus* (Emerton)
Global: Southwestern BC south to CA
BC: Inverness, Carmanah Valley, Victoria area (Rocky Pt, Sooke, Saanich)
- Linyphantes pualla* Chamberlin & Ivie
Global: AK south to OR
BC: Carmanah Valley, Sidney, Forrest Is (Sidney), Victoria area (Ayum Ck, Rocky Pt, Island View Beach, nr Prospect Lk, Pearson College), nr Prevost Is (Big Red Is, Glenthorne Is), Gulf Islands Nat Pk (Big Channel Is, Portland Is), Mt Maxwell (Saltspring Is), Roberts Ck, Burton, Mt Wurttemberg ("Darkwoods" NE of Salmo)
- Linyphantes victoria* Chamberlin & Ivie
Global: AK south to WA
BC: Victoria, Victoria area (nr Prospect Lk, Pearson College), N Hawkins Is (nr Saltspring Is), jct E & N White R FSR (E of Whiteswan Lk)
- * *Linyphia triangularis* (Clerck)
Global: Palaeartic; introduced in Nearctic -- ME & BC
BC: Ft Langley
- Maso sundevalli* (Westring)
Global: Holarctic; in Nearctic - YT to NF south to MT & TN
BC: Babine Lk (Pinkut Ck, Johnson Bay), Liard R Hot Springs, Hwy 29 @ Lynx Ck, Hwy 29 NE of Hudsons Hope, Hwy 29 @ Watson Slough, nr Lemoray, Kootenay Nat Pk (Daer-Pitts)
- Mecynargus monticola* (Holm)
Global: Holarctic; in Nearctic - YT to NT south to northern BC
BC: Summit Lk (Alaska Hwy)
- Mecynargus paetulus* (O. P.-Cambridge)
Global: Holarctic; in Nearctic - AK to Greenland south to BC & QC
BC: Summit Lk (Alaska Hwy)
- Megalepthyphantes nebulosus* (Sundevall)
Global: Palaeartic; introduced in Nearctic - BC to NS south to CO & SC
BC: Kamloops
- Mermessus holdus* (Chamberlin & Ivie)
Global: BC south to WY
BC: Victoria
- Mermessus paludosus* (Millidge)
Global: BC
BC: Goldstream Prov Pk
- Mermessus taibo* (Chamberlin & Ivie)
Global: Southwestern BC to AZ & NM
BC: "Vancouver Is"
- * *Mermessus tridentatus* (Emerton)
Global: BC, MB to QC south to TX & FL, Puerto Rico
BC: Victoria
- Mermessus trilobatus* (Emerton)
Global: NT to NF south to MX & FL; introduced to western Palaeartic
BC: Terrace, Comox, Forrest Is (Sidney), Gulf Islands Nat Pk (Portland Is), Tree Is (nr Chemainus), Saanichton, Roberts Ck, Delta, Burnaby, Coquitlam, nr Prince George, Valemount, East Arrow (S of Nakusp), Burton, Yoho Nat Pk, Field (shoreline)
- Metopobactrus pacificus* Emerton
Global: AK south to WA
BC: Copper R valley (nr Terrace), Mt Cain (Vancouver Is), Victoria area (Rocky Pt, Victoria), Gulf Is Nat Pk (Big D'Arcy Is)
- Microlinyphia dana* (Chamberlin & Ivie)
Global: AK south to CA
BC: Widespread on coastal BC, Osoyoos
- Microlinyphia impigra* (O. P.-Cambridge)
Global: Holarctic; in Nearctic - AK to ON south to WA & NY
BC: Johnson Bay (Babine Lk)
- Microlinyphia mandibulata* (Emerton)
Global: AK to NF south to UT & GA
BC: Donald Landing (Babine Lk)
- Microlinyphia mandibulata punctata* (Chamberlin & Ivie)
Global: BC south to CA & AZ
BC: Widespread in BC
- Microlinyphia pusilla* (Sundevall)
Global: Holarctic; in Nearctic - AK to QC south to ID & CO
BC: Babine Lk (Johnson Bay, Donald Landing), Yoho Nat Pk (Emerald Lake)
- Microneta viaria* (Blackwall)
Global: Holarctic; in Nearctic - AK to QC south to NM & PA
BC: Cottonwood R, E of Smithers, Babine Lk (Johnson Bay, Smithers Landing), Boya Lk, Hwy 29 @ Szoo Rd, Hwy 29 @ Watson Slough, nr Hudson's Hope, Mosquito Ck (Arrow Lk), Yoho Nat Pk (nr Wapta Falls), Carmanah, Victoria, Big Red Is, Gulf Islands Nat Pk (Brackman Is), Tent Is (nr Chemainus), Vancouver, Surrey, Westham Island (Delta)
- Mythoplastoides erectus* (Emerton)
Global: AK south to WA & WY
BC: Tanglechain Lk, Copper R (Terrace), nr Prince George, Courtenay, Whistler (Village, Rainbow Lk Tr, Beverley Lk, Blackcomb Mtn), Manning Prov Pk, Beaton, Granite Mtn (Rossland), "Darkwoods" ne of Salmo (km 30 Tye Rd, Elmo Lk Rd, lower Laib Rd, nr Devil's Hole Lk), Waldie Lk (Salmo), Heather Mtn, nr east entrance Glacier Nat Pk, Rogers Pass, Kootenay Nat Pk (Stanley Glacier Tr), Yoho Nat Pk (Paget Pk, Takakkaw Falls, Yoho Valley Rd, Lk O'Hara access rd, Emerald Lk)

- Neriere digna* (Keyserling)
Global: AK south to CA
BC: Smithers Landing, Hwy 29 @ Halfway Ck, Kyuquot, Union Island, Sansum Narrows Reg Pk (nr Genoa Bay), Victoria area (Matheson Lk, Pearson College, Veitch Ck, Langford, Goldstream Prov Pk, Saanich, Victoria), Big Red Is, Long Harbour, Tent Is (nr Chemainus), Gulf Islands Nat Pk (Cabbage Is), Gillies Bay (Texada Is), Vancouver, Whistler (Village, Rainbow Lk trail), Roberts Ck, Princeton, Beaton, Edgewood, Yoho Nat Pk (Boulder Ck)
- Neriere litigiosa* (Keyserling)
Global: Holarctic; in Nearctic - BC to MT south to MX
BC: Cowichan Lk, Departure Bay, Victoria, Saanich, Big Red Is, N Hawkins Is (nr Saltspring Is) Gulf Islands Nat Pk (Acland Is, Bright Is, Cabbage Is, Tumbo Is), Texada Is, Vancouver (Stanley Pk), Whistler (Brandywine Prov Pk), Lillooet, Kamloops, Vernon, Ft Fraser, Hwy 29 NE of Hudsons Hope, Sunken Ck Tr (nr Cranbrook)
- Neriere radiata* (Walckenaer)
Global: Holarctic; in Nearctic - AK to NS south to AZ & FL
BC: Island View Beach (Victoria), Whistler (Brandywine Prov Pk), Lillooet, Hwy 99 @ Hat Ck Rd, Paul Lk, Trinity Valley, Salmon Arm, Creston, St Mary Lk (nr Kimberly), Glacier Nat Pk (Beaver Valley), Yoho Nat Pk (jct Yoho & Kicking Horse Rivers, Paget Peak), Ramparts Grassland (Cranbrook), Sunken Ck Tr (nr Cranbrook), Hwy 29 @ Bear Flat, Hwy 29 @ Watson Slough
- Oaphantes* sp. Chamberlin & Ivie
Global: SW BC to S OR
BC: Mt Cain (Vancouver Is), Gulf Islands Nat Pk (Acland Is, Big D'Arcy Is, Brackman Is, Portland Is), Metchosin (Rocky Pt)
- Oedothorax alascensis* (Banks)
Global: AK to NF south to CA & NE
BC: Copper R valley, Kitsault Pass, Johnson Bay (Babine Lk), Port Renfrew, Jordan R, Sooke, Tod Inlet (Victoria), Forrest Is (Sidney), Gulf Islands Nat Pk (Cabbage Is, Portland Is), Vancouver, Black Tusk microwave, Clinton, nr Vanderhoof, Kootenay Pass, Burton, Beaton, Mosquito Ck (Nakusp), Yoho Nat Pk (Takakkaw Falls, Emerald Lk)
- Oedothorax trilobatus* (Banks)
Global: Nearctic
BC: Revelstoke, Liard Hotsprings, Jordan R bog (Vancouver Island)
- * *Oreoneta banffkluanensis* Saaristo & Marusik
Global: Southwestern YT to southwestern AB
BC: Glacier Tr (Cathedral Lks Prov Pk), Kinaskan Lk, Grave's Lookout (E of Canal Flats)
- Oreoneta leviceps* (L. Koch)
Global: Holarctic; in Nearctic - AK & BC to NT & QC
BC: Pink Mtn
- Oreonetides filicatus* (Crosby)
Global: AK south to CA
BC: nr Sooke (Ayum Ck, Veitch Ck, Monument Ridge), N Acland Is (nr Ganges), Gulf Is Nat Pk (Big D'Arcy Is), Roberts Ck, Cathedral Lks Prov Pk (upper access rd), Copper R (Terrace), nr Prince George, nr Valemount (Yellow Jacket Ck), Wap Lk, Granite Mtn (Rossland), "Darkwoods" NE of Salmo (Elmo Rd, Mt Wurttemberg, Swamp Basin Rd), Waldie Lk (Salmo), Ripple Ridge (Kootenay Pass), Golden, Beaton, Revelstoke, Mt Revelstoke, Sale Mtn, Mt Fidelity, Rogers Pass, Paget Pk (nr Field)
- * *Oreonetides flavus* (Emerton)
Global: Southwestern AB & southeastern BC to northern WA
BC: Yoho Nat Pk (Lk O'Hara access rd)
- * *Oreonetides rectangulatus* (Emerton)
Global: AK & BC to QC & NY
BC: Burnaby
- Oreonetides rotundus* (Emerton)
Global: AK to NF south to BC & NY
BC: Enderby, Tumbler Ridge, Babine Lk (Johnson Bay), McDonnell FSR (W of Smithers)
- * *Oreonetides* sp. Strand
Global: BC & AB
BC: "Darkwoods" NE of Salmo (Wurttemberg Mtn), Whistler (Black Tusk microwave, Beverley Lk), Blowdown Pass (SW of Lillooet), Sale Mtn (N of Revelstoke), Mt Revelstoke, Mt Mackenzie (Revelstoke), Mt Fidelity (Glacier Nat Pk), Paget Pk (nr Field), Lk O'Hara area (Odaray/Grandview Tr, Opabin Plateau), Mt Hefty (Flathead drainage)
- Oreonetides vaginatus* (Thorell)
Global: Holarctic; in Nearctic - AK to Greenland south to AZ & NY
BC: Copper R (Terrace), Dease Lk, Summit Lk, Sikanni R, Pink Mtn, Liard R Hotsprings, Tumbler Ridge, Black Tusk microwave, Blowdown Pass (SW of Lillooet), Cathedral Lks Prov Pk (upper access rd, Glacier Lk Tr, Rim Tr, Scout Lk), Idaho Pk (nr New Denver), "Darkwoods" NE of Salmo (nr Devil's Hole Lk, Wurttemberg Mtn), Ripple Ridge (Kootenay Pass), Rogers Pass, Lakit Peak (Ft Steele), Yoho Nat Pk (Yoho Valley Rd, jct Yoho & Kicking Horse Rivers, Paget Peak, Lk O'Hara access rd, Odaray/Grandview Tr), Stanley Glacier Tr (Kootenay Nat Pk)
- Oreophantes recurvatus* (Emerton)
Global: Northeastern BC to QC south to NY
BC: Ft Nelson
- * *Ostearius melanopygius* (O. Pickard-Cambridge)
Global: Palaearctic; in Nearctic - BC, CA, WA, QC, CT
BC: Fraser Valley greenhouses (Delta, Abbotsford, Langley, Agassiz, Sumas)
- Paciphantes magnificus* (Chamberlin & Ivie)
Global: AK south to OR
BC: Terrace, Inverness (Pt Edward), Cameron Lk
- Pelecopsis mengei* (Simon)
Global: Holarctic; in Nearctic - AK to NF south to BC and NY
BC: Beaton, Yoho Nat Pk (nr Wapta Falls)
- Pelecopsis sculpta* (Emerton)
Global: AK south to OR & WY
BC: Ft Fraser, Copper R (nr Terrace), Hwy 29 @ Szoo Rd, Tumbler Ridge, Metlakatla, nr Valemount (Yellow Jacket Ck), Errington, Carmanah Valley, Victoria area (nr Prospect Lk, Observatory Hill, Goldstream Prov Pk, Jocelyn Hill, Memorial Ridge, Witty's Lagoon, Rocky Pt), Saturna Is (nr Money Lk), Whistler Peak, Blowdown FSR (SW of Lillooet), Roberts Ck, Highline Rd nr Darcy, nr Prince George, Revelstoke, St Mary Lk (nr Kimberly), Eager Hills (Cranbrook), Lk Koocanusa, Cabin Ck FSR (Flathead R drainage), Yoho Nat Pk (Paget Pk, Lk McArthur Tr), Kootenay Nat Pk (Daer-Pitts, Stanley Glacier Tr)
- Phlathothrata flagellata* (Emerton)
Global: Southern BC to NF south to ME
BC: Upper Carmanah Valley, Kootenay Nat Pk (Daer-Pitts)
- Phlathothrata parva* (Kulczynski)
Global: Holarctic; in Nearctic - AK to MB south to WA
BC: Sikanni Chief R, Tagish Lk, Liard R Hotsprings, Johnson Bay (Babine Lk), Burnaby
- Pityohyphantes alticeps* Chamberlin & Ivie
Global: South central BC to WA & WY
BC: nr Smithers, Sovereign Lk (Vernon), Bull R valley (NE of Cranbrook)
- Pityohyphantes brachygynus* Chamberlin & Ivie
Global: Southern interior BC to CA
BC: Fountain Valley (Lillooet)

- * *Pityohyphantes costatus* (Hentz)
Global: AK & BC to NF and CT
BC: uncertain localities, specimens presumably in CNC; Hwy 29 @ Watson Slough
- Pityohyphantes cristatus* Chamberlin & Ivie
Global: BC to SK south to WY
BC: Kinaskan Lk, Whistler (Rainbow Lk Tr, Madeley Lk), Coquihalla Lks, Blowdown Pass (SW of Lillooet), "Cottonwood R.", Stoner, Beaconsfield Mtn. (Penticton), Summerland, Mt Baldy, Idaho Pk (nr New Denver), Ripple Ridge (Kootenay Pass), "Mt. McLean", Mt Revelstoke, Mt Fidelity, Balu Pass, Yoho Nat Pk (Odaray Tr, Yoho Valley Rd)
- Pityohyphantes kamela* Chamberlin & Ivie
Global: Southern interior BC south to OR
BC: Seton Creek (Lillooet)
- Pityohyphantes limitaneus* (Emerton)
Global: YT to NS south to BC & ME
BC: Atlin
- Pityohyphantes minidoka* Chamberlin & Ivie
Global: Southern interior BC south to OR & ID
BC: Fountain Valley (Lillooet)
- Pityohyphantes rubrofasciatus* (Keyserling)
Global: Southwestern BC south to CA
BC: Cameron Lk
- Pityohyphantes subarcticus* Chamberlin & Ivie
Global: AK & BC to NF
BC: "Northern BC"
- Pocadicnemis americana* Millidge
Global: AK to NF south to UT & NY
BC: Enderby, Hwy 29 @ Szoo Rd
- Pocadicnemis pumila* (Blackwall)
Global: Holarctic, in Nearctic - AK to NH south to NM & MA
BC: Frederick Island, Tanglechain Lk, Copper R valley (nr Terrace), Kyuquot, Cowichan Lk, Honeymoon Bay, Sansum Narrows Reg Pk (nr Genoa Bay), Victoria area (Rocky Pt, Pearson College, Witty's Lagoon), Jordan R bog (Vancouver Is), Big Red Is, S Hawkins Is (nr Saltspring Is), Fulford Hbr, Long Hrb, Sallas Is (nr Sidney Is), Gulf Islands Nat Pk (Tumbo Is), Roberts Ck, Mt Cheam (nr Chilliwack), Manning Prov Pk, Summerland, Burton, nr Prince George
- Poecilneta aggressa* (Chamberlin & Ivie)
Global: Southern BC and AB south to WA, UT, and WY (apparently also in QC)
BC: Cathedral Lks Prov Pk (Glacier Lk Tr, Rim Tr), Lk O'Hara area (Odaray/Grandview Tr)
- * *Poecilneta bihamata* (Emerton)
Global: BC, QC to NL south to NH
BC: Hwy 97 S of Taylor
- Poecilneta calcaratus* (Emerton)
Global: YT to NF south to CO & MI
BC: Babine Lake (Johnson Bay), Liard R. Hotsprings, 37 km w of Ft. Nelson, Yoho Nat Pk (Boulder Ck Ranger Sta)
- Poecilneta canionis* Chamberlin & Ivie
Global: BC south to UT
BC: Cathedral Lks Prov Pk (upper access rd, Rim Tr), Idaho Pk (nr New Denver), "Darkwoods" NE of Salmo (Mt Wurttemberg), Pine Pass (nr Dawson Creek), Hwy 16 100 km E of Prince George, Sale Mtn, Mt Revelstoke, Mt Fidelity, Yoho Nat Pk (jct Yoho & Kicking Horse Rivers, Odaray/Grandview Tr)
- Poecilneta fructuosa* (Keyserling)
Global: AK south to WA
BC: Boya Lk, Mt Cain (Vancouver Is), Rocky Point (Victoria), Blowdown Pass (SW of Lillooet), Sale Mtn, Mt Revelstoke, Mt Fidelity, Lk O'Hara area (Odaray/Grandview Tr, Lk McArthur Tr)
- Poecilneta lyrica* (Zorsch)
Global: AK south to OR
BC: Terrace, Mesachie Lk, Cowichan Lk, Ucluelet, Saanich, Gulf Islands Nat Pk (Cabbage Is), Blackcomb Mtn, Black Tusk microwave, Mission Ridge (Seton Portage), Blowdown Pass (SW of Lillooet), Beaconsfield Mtn (Penticton), Cathedral Lks Prov Pk (Rim Tr), Mt Baldy, Granite Mtn (Rossland), Idaho Pk (nr New Denver), Kootenay Pass, Ripple Ridge (Kootenay Pass), "Darkwoods" NE of Salmo (Swamp Basin Rd, Wurttemberg Mtn), Graves Lookout Tr (E of Whiteswan Lk), Mt Revelstoke Nat Pk, Sale Mtn, Mt Mackenzie, Balu Pass, Whitetooth Ridge, Lk O'Hara area (Paget Pk, Odaray/Grandview Tr, Lk McArthur Tr, Opabin Plateau), Stanley Glacier Tr (Kootenay Nat Pk), Graves Lookout Tr (E of Whiteswan Lk)
- Poecilneta petrophila* Tanasevitch
Global: Holarctic; in Nearctic - YT & BC
BC: Whitetooth Mtn (Kicking Horse Resort), Stanley Glacier Tr (Kootenay Nat Pk)
- Poecilneta variegata* (Blackwall)
Global: Holarctic; in Nearctic, YT south to WA & SK
BC: Summit Lk, Pink Mtn, "Darkwoods" NE of Salmo (Elmo Lk Rd), Graves Lookout Tr (E of Whiteswan Lk)
- Porrhomma convexum* (Westring)
Global: Holarctic; in Nearctic - AK to Greenland south to WA
BC: Carmanah Valley, N Vancouver, Whistler (Madeley Lk), Beaconsfield Mtn (nr Penticton), Glacier Nat Pk (Mt Fidelity)
- * *Porrhomma terrestre* (Emerton)
Global: AK to QC south to BC, WY, & NY
BC: Surrey (Surrey Bend Reg Pk)
- Praestigia kulczynskii* Eskov
Global: Holarctic; in Nearctic - YT to QC south to northern BC & ME
BC: Johnson Bay (Babine Lk), Burton, Edgewood
- Saaristoa sammamish* (Levi & Levi)
Global: AK south to WA & MT
BC: Haida Gwaii (Queen Charlotte Islands), Pt Edward, Harris Ck spruce (nr Port Renfrew), Coquitlam (Colony Farm), Burnaby
- Satilatlas marxi* Keyserling
Global: Holarctic; in Nearctic - southwestern BC to NS south to MO & NY
BC: Carmanah Valley, N Vancouver
- * *Sciastes mentasta* (Chamberlin & Ivie)
Global: AK & BC to NF
BC: unknown BC localities, specimens presumably in CNC
- Sciastes truncatus* (Emerton)
Global: AK to NF south to WY & NY
BC: Hwy 37 @ Needlepoint Mtn, Tanglechain Lk, Sikanni Chief R, Summit Lk (Alaska Hwy), Copper R valley (nr Terrace), Dease Lk, Hwy 29 @ Szoo Rd, Hwy 29 @ Watson Slough, S of Taylor, Ft St James, nr jct of E & N White FSRs, Lk O'Hara access rd, Cathedral Lakes Prov Pk (Glacier Lk Trail)
- Scironis sima* Chamberlin
Global: Southwestern BC south to OR
BC: Barkley Sd, Cowichan Lk, Koksilah, Mesachie Lk, Victoria area (Veitch Ck, Goldstream Prov Pk, nr Prospect Lk, Observatory Hill), N & E Hawkins Is (nr Saltspring Is), Long Harbour, Gulf Is Nat Pk (Big D'Arcy Is), Saturna Is (nr Money Lk), Dock Is (nr Sidney), Tent Is (nr Chemainus), Yellow Point, Roberts Ck, Tow Hill (Haida Gwaii)
- Scironis tarsalis* (Emerton)
Global: AK to NF south to WA & NY
BC: Liard R Hotsprings

- Scotinotylus alpinus* (Banks)
Global: Holarctic; in Nearctic - AK to Greenland south to CO & NH
BC: Whistler Peak, Black Tusk microwave, Mission Ridge (Seton Portage), Blowdown Pass (SW of Lillooet), Cathedral Lks Prov Pk (Glacier Lk Tr, Rim Tr), Mt. Baldy, Summit Lk (Alaska Hwy), Pink Mtn, Chilkat Pass, Copper R (Terrace), Mt Mackenzie, Whitetooth Ridge, Yoho Nat Pk (Paget Pk, Takakkaw Falls, Lk McArthur Tr, Odaray/Grandview Tr, Opabin Plateau), Stanley Glacier Tr (Kootenay Nat Pk)
- Scotinotylus ambiguus* Millidge
Global: Southern interior BC south to WA & WY
BC: Southern Okanagan Valley
- Scotinotylus bicavatus* Millidge
Global: Southwestern BC south to OR
BC: Manning Prov Pk, Deadman Valley FSR (nr Cache Ck)
- Scotinotylus columbia* (Chamberlin)
Global: Southwestern BC
BC: Cameron Lk, Victoria area (Saanich Inlet, Goldstream Prov Pk), Roberts Ck
- Scotinotylus eutypus* (Chamberlin)
Global: BC south to OR
BC: Parksville, Sidney, Black Tusk microwave
- Scotinotylus gracilis* Millidge
Global: Southwestern BC south to CA
BC: Rocky Point (Victoria)
- Scotinotylus majesticus* (Chamberlin & Ivie)
Global: AK and YT south to CO and WY
BC: Gray Ck Pass (Crawford Bay), Stanley Glacier Tr (Kootenay Nat Pk), Paget Pk (Yoho Nat Pk)
- * *Scotinotylus pallidus* (Emerton)
Global: BC to NF south to NM & NY
BC: Hwy 29 @ Halfway R
- Scotinotylus patellatus* (Emerton)
Global: AK south to CA
BC: Haida Gwaii (Queen Charlotte Islands), Honeymoon Bay, Port Renfrew, Victoria area (Grassie Lk (Sooke Hills), Pearson College, Veitch Ck, Goldstream Prov Pk, Mystic Vale, Beaver Lk Reg Pk), Long Hbr, Tent Is (nr Chemainus), Whistler (Blackcomb Mtn, Rainbow Lk Tr), Helliwell Prov Pk, Manning Prov Pk, Cathedral Lks Prov Pk (Glacier Lk Tr), Beaton, "Darkwoods" NE of Salmo (lower Laib Rd), east of east entrance to Glacier Nat Pk
- Scotinotylus protervus* (L. Koch)
Global: Holarctic; in Nearctic - AK to YT south to northern BC
BC: Summit Lk (Alaska Hwy)
- Scotinotylus regalis* Millidge
Global: SE BC & W MT
BC: "Darkwoods" NE of Salmo (lower Laib Rd), Graves Lookout Tr (E of Whiteswan Lk)
- Scotinotylus sacer* (Crosby)
Global: Holarctic; in Nearctic - AK to Greenland south to OR & WY
BC: Hwy 37 @ Needlepoint Mtn, nr Hudson's Hope, Kinaskan Lk, Sikanni Chief R, Summit Lk (Alaska Hwy), Copper R valley (nr Terrace), nr Prince George, Yoho Nat Pk (Lk O'Hara access rd, Takakkaw Falls, jct Yoho & Kicking Horse Rivers), Manning Prov Pk, Rocky Point (Victoria)
- Scotinotylus sanctus* (Crosby)
Global: Southern BC to AB south to AZ
BC: Mt Arrowsmith, Victoria (Island View Beach), Mission Ridge (Seton Portage), Blowdown Pass (SW of Lillooet), Bridge/Yalakom R area, Gang Ranch Bridge, Kamloops, Mt Cheam (nr Chilliwack), Manning Prov Pk (Paintbrush Tr), Cathedral Lks Prov Pk (Rim Tr), Beaconsfield Mtn (nr Penticton), Old Hedley Rd, Kilpoola Lk, Mt Baldy, Granite Mtn (Rossland), Idaho Pk (nr New Denver), "Darkwoods" NE of Salmo (Swamp Basin Rd, Wurttemberg Mtn), Kootenay Pass, Gray Ck Pass (Crawford Bay), Evening Ridge Mtn (Nelson), Rampart grassland (E of Cranbrook), Lakit Peak (Ft Steele), lower Bull R valley (E of Cranbrook), Bummers Flats (Ft Steele), Sale Mtn, Mt Revelstoke, Mt Mackenzie, Mt Fidelity, Balu Pass, Whitetooth Ridge, Yoho Nat Pk (Paget Pk, Lk McArthur Tr, Odaray/Grandview Tr), Kootenay Nat Pk (Stanley Glacier Tr)
- Semljicola obtusus* (Emerton)
Global: AK to Greenland south to CO
BC: Cathedral Prov Pk
- Silometopoides pampia* (Chamberlin)
Global: Holarctic; in Nearctic - AK to NT south to northern BC
BC: Sikanni Chief R
- Sisicottus crossoclavis* Miller
Global: South central BC & southwestern AB south to NW, WA and N ID
BC: Granite Mtn (Rossland), "Darkwoods" NE of Salmo (Mt Wurttemberg, 30 km Tye Rd, lower Laib Rd, nr Devil's Hole Lk, nr Porcupine Lk), Waldie Lk (Salmo), Ripple Ridge (Kootenay Pass), Yoho Nat Pk (Paget Pk, Takakkaw Falls, Yoho Valley Rd)
- Sisicottus montanus* (Emerton)
Global: AK to NF south to AZ & NY
BC: Hwy 37 @ Needlepoint Mtn, Tanglechain Lk, Summit Lk (Alaska Hwy), Heart Lk (nr Dease Lk), Dease Lk, Liard R Hotsprings, Sikanni Chief R, Hwy 29 @ Watson Slough, Tumbler Ridge, S of Taylor, nr Lemoray, Whiskers Point Prov Pk, Gray Ck Pass (nr Crawford Bay), Bull R valley (NW of Elkford), Graves Lookout Tr (E of Whiteswan Lk), Mt Revelstoke, Yoho Nat Pk (Boulder Ck Ranger Sta, Paget Pk, Lk O'Hara access rd, Odaray Tr, jct Yoho & Kicking Horse Rivers, Emerald Lk), Glacier Nat Pk, Goldstream Prov Pk
- Sisicottus nesides* (Chamberlin)
Global: AK to YT south to OR
BC: Widespread in BC
- Sisicottus orites* (Chamberlin)
Global: Southeastern BC to AB south to CA & NM
BC: Yoho Nat Pk (Boulder Ck Ranger Sta, Emerald Lk), Banff Nat Pk, Waterton Lks Nat Pk, Lakit Peak (Ft Steele)
- Sisicottus panopeus* Miller
Global: Eastern Palearctic & western Nearctic; in Nearctic - AK south to WA & WY
BC: Tanglechain Lk, Copper R (Terrace), Mt Arrowsmith, Strathcona Prov Pk, Nitinat (Heather Mtn), Whistler (Blackcomb Mtn, Whistler Peak, Black Tusk microwave, Beverley Lk), Mission Ridge (Seton Portage), Blowdown Pass (SW of Lillooet), Manning Prov Pk, Cathedral Lks Prov Pk (upper access rd, Glacier Lk Tr), Beaconsfield Mtn (Penticton), Evening Ridge Mtn (nr Nelson), Idaho Pk (nr New Denver), Ripple Ridge (Kootenay Pass), Moosehorn Lk (57.34N, 127.12W), Sale Mtn, Mt Revelstoke, Mt Mackenzie, Glacier Nat Pk (Mt Fidelity, Balu Pass), Whitetooth Ridge (nr Golden, Yoho Nat Pk (Lk O'Hara access rd, Odaray Tr, Lk McArthur Tr, Opabin Plateau), Flathead Valley
- Sisicus apertus* (Holm)
Global: Holarctic; in Nearctic - AK to Greenland south to OR & WY
BC: Hwy 37 @ Needlepoint Mtn, Kinaskan Lk, Sikanni Chief R, Summit Lk (Alaska Hwy), Copper R valley (nr Terrace), nr Prince George, Yoho Nat Pk (Lk O'Hara access rd, Yoho Valley Rd, jct Yoho & Kicking Horse Rivers), Manning Prov Pk, Rocky Point (Victoria)
- Sisicus penifusifer* Bishop & Crosby
Global: Southern BC to NB south to WI & NY
BC: Goldstream Prov Pk, Burton, Glacier Nat Pk

- Sisis rotundus* (Emerton)
Global: AK to NF south to WA
BC: Victoria area (Ayum Ck, Grassie Lk (Sooke Hills), Sugarloaf Mtn, Mt Braden, Veitch Ck, Witty's Lagoon, Jocelyn Hill), Whistler (Rainbow Lk Tr, Alpha Lk Pk), Summit Lk (Alaska Hwy), Hwy 37 @ Needlepoint Mtn, Hwy 29 @ Watson Slough, Sikanni Chief R, Copper R (Terrace), Yoho Nat Pk (Yoho Valley Rd)
- Soucron arenarium* (Emerton)
Global: YT & BC to NS
BC: Springhouse, Hwy 29 @ Watson Slough
- * *Souessa spinifera* (O. P.-Cambridge)
Global: YT to NL south to northern BC & NJ
BC: Smith Ck (Ft Fraser)
- Sougambus bostoniensis* (Emerton)
Global: BC to NF south to WI & NY
BC: Penticton
- Spirembolus abnormis* Millidge
Global: Southwestern BC south to CA
BC: Wellington
- Spirembolus chilkatensis* (Chamberlin & Ivie)
Global: AK south to OR
BC: Chemainus, Victoria area (Pearson College)
- Spirembolus demonologicus* (Crosby)
Global: Southwestern BC south to CA
BC: Victoria area (Rocky Point, Saanich, Island View Beach, Jocelyn Hill), Mt Maxwell (Saltspring Is), N. Hawkins Is (nr Saltspring Is), Gulf Islands Nat Pk (Bright Is, Cabbage Is, Portland Is, Big & Tiny D'Arcy Is), Roberts Ck
- Spirembolus monticolens* (Chamberlin)
Global: BC south to CA & UT
BC: Johnson Bay (Babine Lk), Victoria, Summerland
- Spirembolus mundus* Chamberlin & Ivie
Global: Western BC south to OR & UT
BC: Nanoose Bay, Island View Beach (Victoria), Galiano Is, Rose Spit (Haida Gwaii)
- Spirembolus prominens* Millidge
Global: Southern BC to AB south to WA
BC: Victoria, Manning Prov Pk, Summerland
- Styloctetor stativus* (Simon)
Global: Holarctic; in Nearctic - YT & northern BC to QC
BC: Tetsa R (Alaska Hwy), Lk O'Hara access rd, nr Valemount (Dave Henry Ck)
- Symmigma minimum* (Emerton)
Global: AK south to WA
BC: Newcombe Hbr, Barkley Sd, Walbran Valley, Port Renfrew, Ayum Ck (nr Sooke), Roberts Ck, Manning Prov Pk, Mt Kobau, McMicking Is (nr Prince Rupert), Terrace, Copper R valley, nr Prince George, Silverton, Beaton, Burton, "Darkwoods" NE of Salmo (30 km Tye Rd, lower Laib Rd), Golden, Glacier Nat Pk (Beaver Valley, others), Yoho Nat Pk (jct Yoho & Kicking Horse Rivers), Flathead Valley
- * *Tachygyna coosi* Millidge
Global: Southwestern BC, WA, & OR
BC: Beaver Lake Reg Pk (Victoria)
- Tachygyna exilis* Millidge
Global: Southern BC & WA
BC: Princeton, Allison Pass (Manning Prov Pk), E of Glacier Nat Pk
- Tachygyna haydeni* Chamberlin & Ivie
Global: BC to AB south to AZ & NM
BC: Summit Lk (Alaska Hwy), Manning Prov Pk, Yoho Nat Pk (Paget Pk)
- * *Tachygyna pallida* Chamberlin & Ivie
Global: Southeastern BC & southwestern AB to UT & CO
BC: Marble Canyon, Lakit Peak (Ft Steele)
- Tachygyna proba* Millidge
Global: Southern BC & WA
BC: Allison Pass (Manning Prov Pk)
- Tachygyna ursina* (Bishop & Crosby)
Global: AK to AB south to OR
BC: Goldstream Prov Pk, Vancouver, Whistler (Alpha Lk Pk), Manning Prov Pk, Teaquahan R (Bute In), nr Salmon Valley, Copper R (nr Terrace), Boulder Ck (Yoho Nat Pk)
- Tachygyna vancouverana* Chamberlin & Ivie
Global: BC south to CA & ID
BC: Terrace, nr Prince George, Bute Inlet, Brooks Peninsula, Mesachie Lk, Sansum Narrows Reg Pk (nr Genoa Bay), Victoria area (Goldstream Prov Pk, Humpback Rd, Veitch Ck, Pearson College, Matheson Lk, nr Prospect Lk, Observatory Hill, Jocelyn Hill, Mystic Vale), N Hawkins Is (nr Saltspring Is), Saturna Is (nr Money Lk), Tent Is (nr Chemainus), Nanaimo (Yellow Point), Helliwell Prov Pk, Whistler (Rainbow Lk Tr, Alpha Lk Pk), Vancouver (Stanley Pk), Roberts Ck, Manning Prov Pk, Princeton, Trinity Valley, "Darkwoods" NE of Salmo (Elmo Lk Rd), Flathead Valley
- Tapinocyba dietrichi* Crosby & Bishop
Global: AK south to CA
BC: Tanglechain Lk, Copper R valley, Hwy 29 NW of St St John, Mt Maxwell (Saltspring Is), N S & E Hawkins Is (nr Saltspring Is), Victoria area (Pearson College, Rocky Point, Sugarloaf Mtn, Veitch Ck, Goldstream Prov Pk, Island View Beach, Saxe Pt, Forrest Is), Gulf Islands Nat Pk (Portland Is, Tumbo Is), Vancouver area (Belcarra, Stanley Pk), Carmanah Valley, Cathedral Lks Prov Pk (Glacier Lk Tr), Idaho Pk (nr New Denver), "Darkwoods" NE of Salmo (Elmo Lk Rd), Waldie Lk (Salmo), Yoho Nat Pk (Boulder Ck Ranger Sta)
- Tapinocyba minuta* (Emerton)
Global: YT to NB south to WI & NY
BC: Goldstream Prov Pk, Hwy 29 @ Watson Slough
- Tapinocyba prima* Duperre & Paquin
Global: YT to NF south to SW AB and NY
BC: along Alaska Hwy (Summit Lk, Tetsa R, Sikanni R)
- Tennesseelum formica* (Emerton)
Global: AK to QC south to AZ and GA
BC: Evening Ridge Mtn (nr Nelson), Bear Flat (nr Ft St John)
- Tenuiphantes tenuis* (Blackwall)
Global: Palaearctic; introduced in Nearctic - BC south to OR. MA
BC: Brooks Peninsula, Comox, Victoria area (Ayum Ck, Forrest Is, Sidney Is, Haliburton Farm, Metchosin, Witty's Lagoon, Rocky Pt), N Hawkins Is (nr Saltspring Is), Gulf Islands Nat Pk (Big & Tiny D'Arcy Is), Vancouver, Sumas, Vernon, Summerland, Vaseux Lk, Osoyoos, Burton
- Tenuiphantes zebra* (Emerton)
Global: AK to NS south to OR & TN
BC: Aleza Lk, Terrace, Hwy 29 @ Szoo Rd
- Tenuiphantes zelatus* (Zorsch)
Global: AK to YT south to OR
BC: Apparently widespread in western BC, Cathedral Lks Prov Pk (Glacier Lk Tr, Rim Tr), nr Cinema, Burton, nr Lemoray, Granite Mtn (Rossland), Idaho Pk (nr New Denver), "Darkwoods" NE of Salmo (30 km Tye Rd, Elmo Rd, km 31.5 Porcupine Rd), Bull R valley (E of Cranbrook), Sale Mtn, Mt Revelstoke, Mt Mackenzie, Mt Fidelity, Rogers Pass, Beaver Valley (Glacier Nat Pk), Yoho Nat Pk (Boulder Ck Ranger Sta, Paget Pk, Yoho Valley Rd, jct Yoho & Kicking Horse Rivers, Lk O'Hara access rd, Lk McArthur Tr, Emerald Lk)

- Tenuiphantes zibus* Zorsch
Global: AK south to OR
BC: Widespread on coastal BC, Yoho Nat Pk (nr Wapta Falls)
- * *Thaleria leechi* Eskov & Marusik
Global: Holarctic; in Nearctic - AK & NW BC
BC: Salmon Glacier Summit (57.1694N 130.0497W)
- Tiso aestivus* (L. Koch)
Global: Holarctic; in Nearctic - YT and Greenland
BC: Whistler Peak
- Tiso vagans* (Blackwall)
Global: Holarctic; introduced in Nearctic - southwestern BC, WA, & NF
BC: Vancouver area (Burnaby, Colony Farm, Westham Is, Boundary Bay)
- Tmeticus ornatus* (Emerton)
Global: BC to QC south to WI & NY
BC: Johnson Bay (Babine Lk), Mt St. Paul (Alaska Hwy)
- Tunagyna debilis* (Banks)
Global: Holarctic; in Nearctic - AK to NF south to WA & NY
BC: along Alaska Hwy (Summit Lk, Sikanni Chief R, Liard R Hot Springs), Prince George, Yoho Nat Pk (Opabin Plateau)
- Typhocrestus pygmaeus* (Sorensen)
Global: YT & BC to Greenland
BC: Tatshensini R (59.44N 137.18W) ("nr pygmaeus"), Cathedral Lakes Prov Pk
- Vermontia thoracica* (Emerton)
Global: Holarctic; in Nearctic - AK to NB south to northern BC & NY
BC: Liard R Hot Springs, Copper R valley
- Wabasso cacuminatus* Millidge
Global: Holarctic; in Nearctic - YT to QC south to WA & NH
BC: Copper R (Terrace), Sikanni Chief R (Alaska Hwy)
- Walckenaeria atrotibialis* (O. P.-Cambridge)
Global: Holarctic; in Nearctic - AK to NS south to WA & NY
BC: Terrace, Liard R Hot Springs, Hwy 29 @ Watson Slough, nr Prince George, Mesachie Lk, Honeymoon Bay, Burnaby, Clinton, Mosquito Ck (nr Nakusp)
- Walckenaeria auranticeps* (Emerton)
Global: Holarctic; in Nearctic - YT to NB south to OR & VA
BC: "Vancouver Island"
- Walckenaeria castanea* (Emerton)
Global: AK to Greenland south to UT & NJ
BC: Dease Lk, Johnson Bay (Babine Lk), 100 km E Prince George, Liard R Hot Springs, Pinkut Ck, Kootenay Nat Pk (Daer-Pitts), Yoho Nat Pk (Boulder Ck, jct Yoho & Kicking Horse Rivers, Emerald Lk)
- Walckenaeria columbia* Millidge
Global: Southern & western BC to WA
BC: Copper R valley, Victoria area (Ayum Ck, Rocky Point, Sugarloaf Mtn, Witty's Lagoon, Sidney, Forrest Is), Gulf Islands Nat Pk (Big D'Arcy Is, Portland Is, Tumbo Is), Glenthorne Is (nr Prevost Is), S Hawkins Is (nr Salt Spring Is), Tent Is (nr Chemainus), Whistler (Madeley Lk), Roberts Ck, Manning Prov Pk, Evening Ridge Mtn (nr Nelson), "Darkwoods" NE of Salmo (Wurtemberg Mtn, nr Porcupine Lk), Waldie Lk (Salmo), Ripple Ridge (Kootenay Pass), Beaver Valley (Glacier Nat Pk), Whitetooth Ridge
- Walckenaeria communis* (Emerton)
Global: AK to QC south to CA & NC
BC: nr Smithers, Tanglechain Lk, along Alaska Hwy (Sikanni Chief R, Tetsa R, Summit Lk), Johnson Bay (Babine Lk), nr Prince George, Cathedral Lakes Prov Pk, Enderby, Yoho Nat Pk
- Walckenaeria cornuella* (Chamberlin & Ivie)
Global: AK south to OR
BC: Haney, Whistler (Rainbow Lk Tr, Madeley Lk, Beverley Lk), Roberts Ck, Port Renfrew, Victoria area (Ayum Ck, Rocky Point, Sugarloaf Mtn, Witty's Lagoon, Goldstream Prov Pk), Yellow Point, Vancouver (Belcarra Pk, Stanley Pk), N Hawkins Is (nr Salt Spring Is), Long Harbour, Tent Is (nr Chemainus), Gulf Islands Nat Pk (Big D'Arcy Is, Acland Is, Cabbage Is, Portland Is), Queen Charlotte City, Dawson In, Copper R (nr Terrace), Johnson Bay (Babine Lk), Pine Pass, Cherryville, Revelstoke, Beaton, Mosquito Ck (SW of Nakusp), E of east entrance to Glacier Nat Pk, Whitetooth Ridge, Emerald Lk
- Walckenaeria cuspidata brevicula* (Crosby & Bishop)
Global: AK to NF south to CO & VT
BC: 49 km S of Cassiar Jct on Cassiar Hwy
- Walckenaeria directa* (O. P.-Cambridge)
Global: AK to NS south to WA & GA
BC: Copper R (nr Terrace), Hwy 29 @ Szoo Rd, Metchosin (Rocky Point), San Juan Ridge (Jordan River), Long Hbr, Tent Is (nr Chemainus), Roberts Ck, Manning Prov Pk, Edgewood, Burton, Beaton, Graves Lookout Tr (E of Whiteswan Lk), Flathead Valley
- Walckenaeria exigua* Millidge
Global: YT to NS south to WA & TN
BC: Terrace, Hwy 29 @ Szoo Rd, Mt St Paul, Manning Prov Pk, Burton, Mosquito Ck (nr Nakusp), Graves Lookout Tr (E of Whiteswan Lk), Kootenay Nat Pk (Daer-Pitts), nr Prince George, Whistler, (Alpha Lk Pk), Roberts Ck, Little Channel Is (nr Ganges), Sansum Narrows Reg Pk (nr Genoa Bay)
- Walckenaeria fusciceps* Millidge
Global: BC to QC south to ON
BC: Fletcher Lk
- Walckenaeria karpinskii* (O. P.-Cambridge)
Global: Holarctic, in Nearctic - AK to Greenland south to WA & NY
BC: along Alaska Hwy (Sikanni Chief R, Tetsa R, Summit Lk), Cathedral Lks Prov Pk (Glacier Lk Tr), Yoho Nat Pk (jct Yoho & Kicking Horse Rivers, Lk McArthur Tr, Odaray Tr, Lk O'Hara access rd)
- Walckenaeria lepida* (Kulczynski)
Global: Holarctic, in Nearctic - AK to NS south to MT & ME
BC: Liard R Hot Springs, Kootenay Nat Pk (Daer-Pitts)
- Walckenaeria monoceras* (Chamberlin & Ivie)
Global: Southern BC to OR
BC: nr Cherryville
- Walckenaeria pallax* Millidge
Global: AK south to WA
BC: Manning Prov Pk
- Walckenaeria subspiralis* Millidge
Global: AK to NS south to CA & NY
BC: nr Prince Rupert, nr Tete Jaune Cache, southern Vancouver Is, Gulf Islands Nat Pk (Tumbo Is), Forrest Is, Osoyoos
- Walckenaeria tricornis* (Emerton)
Global: AK to QC south to northern BC & NY
BC: along Alaska Hwy (Sikanni Chief R, Tetsa R, Liard R Hot Springs, Summit Lk), Johnson Bay (Babine Lk), nr Prince George, Yoho Nat Pk (jct Yoho & Kicking Horse Rivers), Blackwall Peak (Manning Prov Pk), Beaconsfield Mtn (nr Pentiction)
- Walckenaeria vigilax* (Blackwall)
Global: Holarctic; in Nearctic - AK south to WA
BC: Whistler Peak, Black Tusk microwave, Blowdown Pass (SW of Lillooet), Beaconsfield Mtn (Pentiction), Meadow Mtn (Kaslo), Sale Mtn, Mt Mackenzie, Mt Fidelity, Whitetooth Ridge, Yoho Nat Pk (Odaray Tr, Opabin Plateau, Lk McArthur Tr), S of Taylor
- Wubana atypica* Chamberlin & Ivie
Global: AK south to WA
BC: Victoria area (Rocky Point, 10 Mile Point, Mystic Vale, Salt Spring Is), Cameron Lk, Forrest Is (nr Sidney), Whitetooth Ridge (nr Golden), Yoho Nat Pk (nr Wapta Falls, Yoho Valley Rd), Flathead Valley

- (Kishinena Ck / Rose Canyon)
- Wubana drassoides* (Emerton)
Global: Southwestern BC to QC south to CA and NC
BC: Metchosin (Camas Hill), Roberts Ck
- Wubana ornata* Chamberlin & Ivie
Global: Southern BC south to CA
BC: Goldstream Prov Pk, Vernon
- Wubana pacifica* (Banks)
Global: Southwestern BC to QC south to WA & NY
BC: Victoria area (Ayum Ck, Humpback Rd, Rocky Point, Goldstream Prov Pk, nr Prospect Lk, Beaver Lk Reg Pk, Forrest Is), Sansum Narrows Reg Pk (nr Genoa Bay), Cameron Lk, Mt Maxwell (Saltspring Is), N S & E Hawkins Is (nr Saltspring Is), Glenthorne Is (nr Prevost Is), Gulf Islands Nat Pk (Acland Is, Big D'Arcy Is, Big Red Is, Bright Is, Cabbage Is, Portland Is), Saturna Is (nr Money Lk), Roberts Ck, Vancouver (Stanley Pk), Whistler (Blackcomb, Black Tusk microwave, Beverley Lk), Blowdown Pass (SW of Lillooet), Beaton, "Darkwoods" ne of Salmo (lower Laib Rd), Copper R (nr Terrace), Sale Mtn, Mt Revelstoke, Mt Mackenzie, Whitetooth Ridge (nr Golden), Lk O'Hara area (Odaray/Grandview Tr)
- Wubana suprema* Chamberlin & Ivie
Global: Southern AK & southwestern BC to CA
BC: Carmanah Valley, Port Renfrew (Harris Ck spruce), Mt Cain, Rocky Point, N Acland Is (nr Ganges)
- Zornella armata* (Banks)
Global: AK to NF south to MT & NY
BC: along Alaska Hwy (mi 378, mi 392, Ft Fraser, Liard R, Sikanni Chief R, Tetsa R, Summit Lk), Dease Lk, Smithers, Hwy 97 @ Lavitah Mtn, nr Cinema, east of east entrance to Glacier Nat Pk, Yoho Nat Pk (jct Yoho & Kicking Horse Rivers, Boulder Ck Ranger Sta), Kootenay Nat Pk (Daer-Pitts)
- Zornella cryptodon* (Chamberlin)
Global: BC to AB south to WA, UT, & CO
BC: Copper R valley (nr Terrace), Mt Kobau, Blackcomb Mtn (Whistler)
- Zygottus corvallis* Chamberlin
Global: Southwestern BC south to OR
BC: Bute Inlet, Cape Cook Lagoon, Mesachie Lk, Victoria area (Matheson Lk, Humpback Rd, Veitch Ck, Rocky Point, Goldstream Prov Pk, Haliburton Farm, Island View Beach), Gulf Islands Nat Pk (Big D'Arcy Is, Cabbage Is), Mt Maxwell (Saltspring Is), Vancouver area (Burnaby, Belcarra Park)
- ## Liocranidae
- Agroeca ornata* Banks
Global: AK to NS south to CA and NJ
BC: Widespread in BC
- Agroeca pratensis* Emerton
Global: Southern BC to NS south to UT & GA
BC: Summerland, nr Prince George
- Apostenus ducati* Bennett, Copley, & Copley
Global: Southwestern BC to north central WA & northwestern Montana
BC: Black Tusk microwave, Cornice Ridge (Kootenay Pass), Evening Ridge Mtn (S of Nelson), "Darkwoods" NE of Salmo (Swamp Basin Rd), Flathead R Valley (Cabin Ck FSR, Mt Hefty, Kishinena Ck), Idaho Pk (nr New Denver), Gray Ck Pass (nr Crawford Bay)
- ## Lycosidae
- Acantholycosa solituda* (Levi & Levi)
Global: Southern BC and AB south to UT and CO
BC: Cathedral Lks Prov Pk (Rim Tr, Glacier Lk), Ripple Ridge (Kootenay Pass), Flathead Sage FSR
- Alopecosa aculeata* (Clerck)
Global: Holarctic; in Nearctic - AK to NF south to AZ & CT
BC: Widespread in BC
- Alopecosa kochi* (Keyserling)
Global: Southern BC to MA south to northwestern MX & TX
BC: Widespread in southern BC
- Alopecosa pictilis* (Emerton)
Global: Holarctic; in Nearctic - AK to LB south to northern BC & NH
BC: Summit Lk (Alaska Hwy)
- Arctosa alpigena* (Doleschall)
Global: Holarctic; in Nearctic - AK to Greenland south to AZ & NH
BC: Widespread in BC
- Arctosa emertoni* Gertsch
Global: Southern interior BC to NS south to UT & NC
BC: Kamloops, southern Okanagan Valley
- * *Arctosa insignita* (Thorell)
Global: AK to NU south to CO and NL
BC: Sale Mtn (nr Mt Revelstoke)
- Arctosa littoralis* (Hentz)
Global: Southern interior BC to NS south to Panama
BC: Southern Okanagan Valley
- Arctosa perita* (Latreille)
Global: Palaearctic; introduced to NA - southwestern BC
BC: Vancouver area (Burnaby, Coquitlam, Iona Beach, Boundary Bay), Island View Beach (Victoria), Savary Is
- Arctosa raptor* (Kulczynski)
Global: Holarctic; in Nearctic - AK to NF south to BC & ME
BC: Enderby, Jordan R bog (Vancouver Is)
- Arctosa rubicunda* (Keyserling)
Global: NU to NS south to CO & PA
BC: Enderby, Yoho Nat Pk
- Hogna frondicola* (Emerton)
Global: YT to NS south to CA & AL
BC: Widespread in interior BC (especially southern)
- Melocosa fumosa* (Emerton)
Global: Southeastern AK south to MT
BC: Yoho Camp (Yoho Nat Pk), nr Wolverine Pass (Kootenay Nat Pk), Whitetooth Ridge (nr Golden), Lk O'Hara area (Odaray/Grandview Tr, Opabin Plateau), Stanley Glacier Tr (Kootenay Nat Pk), Paradise Mine (nr Invermere)
- Pardosa albomaculata* Emerton
Global: AK to Greenland south to northern BC & NH
BC: Mt St Paul, Summit Lk (Alaska Hwy), Copper R valley
- Pardosa altamontis* Chamberlin & Ivie
Global: Southern BC & AB south to CA & UT
BC: Vancouver, Okanagan Falls, Oliver, Kilpoola Lk, Edgewood, Burton, Waldie Lk (Salmo)
- Pardosa anomala* Gertsch
Global: Southern BC & AB south to UT
BC: Vancouver, "Okanagan Valley", Beaconsfield Mtn (nr Penticton), Sale Mtn, Mt Revelstoke, Mt Mackenzie, Mt Fidelity, Balu Pass, Golden, Whitetooth Ridge (nr Golden), Lk O'Hara area (Lk McArthur Tr, Odaray/Grandview Tr)
- Pardosa bucklei* Kronstedt
Global: Southern BC to SK south to CA & NM
BC: Clinton, southern Okanagan Valley (Mahoney Lk, White Lk), Kishinena FSR nr Rose Canyon (Flathead R drainage)
- Pardosa coloradensis* Banks
Global: Southern interior BC south to CA & NM
BC: Vernon, Kelowna, Summerland, Osoyoos, Orofino Mtn
- Pardosa concinna* (Thorell)
Global: AK to NF south to NM & ME
BC: Widespread in BC

- Pardosa distincta* (Blackwall)
Global: BC to NS south to AZ & CT
BC: Victoria area (Goldstream Prov Pk, Island View Beach, Christmas Hill, Uplands Pk, Sallas Is), Gulf Islands Nat Pk (Big D'Arcy Is), Boundary Bay (Richmond), Hwy 29 @ Lynx Ck, E of Cranbrook (lower Bull R valley, Rampart grassland), Sparwood, Fernie, Flathead R @ US border
- Pardosa diuturna* Fox
Global: Southwestern AK to southwestern BC
BC: Terrace, Jutland Mtn., Mt Arrowsmith, Mt. Alava, Whistler (Whistler Peak, Black Tusk microwave, Beverley Lk, Garibaldi Prov Pk)
- Pardosa dorsalis* Banks
Global: Southern BC & AB south to AZ
BC: Widespread in southern interior BC
- Pardosa dorsuncata* Lowrie & Dondale
Global: Southern AK to AB south to CA & AZ
BC: Widespread in BC
- Pardosa furcifera* (Thorell)
Global: AK to Greenland south to northern BC & QC
BC: along Alaska Hwy (Atlin, Sikanni Chief R, Summit Lk)
- Pardosa fuscula* (Thorell)
Global: AK to NF south to NM & ME
BC: Widespread in BC
- Pardosa groenlandica* (Thorell)
Global: Holarctic; in Nearctic - AK to Greenland south to CA & NM
BC: Widespread in BC
- Pardosa hyperborea* (Thorell)
Global: Holarctic; in Nearctic - AK to NF south to BC & NH
BC: along Alaska Hwy (Atlin, Sikanni Chief R, Summit Lk, Mi 150), Tachilta Lk (Stikine), nr Prince George, Emerald Lk, northern Vancouver Is
- Pardosa lapponica* (Thorell)
Global: Holarctic; in Nearctic - AK to northern ON south to northern BC
BC: Summit Lk (Alaska Hwy)
- Pardosa lowriei* Kronstedt
Global: Southeastern AK to WA
BC: Widespread in BC
- Pardosa mackenziana* (Keyserling)
Global: AK to NF south to CA & CO
BC: Widespread in BC
- Pardosa metlakatla* Emerton
Global: Coastal NA from southeastern AK to OR. Apparent disjunct pop'n in northwestern AB.
BC: Widespread on coastal BC (inland to Copper R area near Smithers)
- Pardosa moesta* Banks
Global: AK to NF south to UT & TN
BC: Widespread in BC
- Pardosa palustris* (Linnaeus)
Global: Holarctic; in Nearctic - AK & YT south to northern BC
BC: Chilkat Pass
- Pardosa podhorskii* (Kulczynski)
Global: Holarctic; in Nearctic - AK to northern ON south to northern BC
BC: Pink Mtn
- Pardosa rainieriana* Lowrie & Dondale
Global: Southwestern BC south to OR
BC: Whistler Peak, Black Tusk microwave, Mission Ridge (Seton Portage), Big Dog Mtn, Lillooet, Cathedral Lks Prov Pk (Rim Tr)
- Pardosa sinistra* (Thorell)
Global: Southern BC & AB south to CO
BC: Manning Prov Pk, Mt Mackenzie, Whitetooth Ridge (nr Golden), Lk O'Hara area (Odaray/Grandview Tr)
- Pardosa tesquorum* (Odenwall)
Global: Holarctic; in Nearctic - AK to northern QC south to UT & northern NM
BC: Widespread in eastern BC, nr Salmon Valley
- Pardosa uintana* Gertsch
Global: AK to NF south to UT & ME
BC: Widespread in BC, especially montane regions
- Pardosa vancouveri* Emerton
Global: Southwestern BC to OR
BC: Widespread from Vancouver Is inland to Lytton
- Pardosa wyuta* Gertsch
Global: BC south to CA & CO
BC: Haida Gwaii (Queen Charlotte Islands), Terrace, nr Prince George, widespread in southern BC
- Pardosa xerampelina* (Keyserling)
Global: AK to NF south to NM & WV
BC: Widespread in BC
- Pirata bryantae* Kurata
Global: AK to NF south to northern BC & QC
BC: Copper R valley, Johnson Bay (Babine Lk), Tetsa R, Sikanni Chief R
- Pirata piraticus* (Clerck)
Global: Holarctic; in Nearctic - AK to NF south to CA & WV
BC: Widespread in BC
- Piratula canadensis* (Dondale & Redner)
Global: BC to NS
BC: Vancouver, Enderby
- Piratula insularis* (Emerton)
Global: Southeastern AK to NF south to AZ & FL
BC: Liard R Hot Springs, Burnaby, Delta (Burns Bog), Enderby
- Schizocosa mccoocki* (Montgomery)
Global: BC to ON south to MX
BC: Mt Maxwell (Salt Spring Is), Vancouver, Lillooet, Kamloops, Vernon, Summerland, Oliver, Apex Mtn, Keremeos, Chopaka, Mt Kobau, Osoyoos, Eager Hills (Cranbrook), Findlay Ck (W of Canal Flats), Bummars Flats WA (nr Ft Steele)
- Schizocosa minnesotensis* (Gertsch)
Global: YT to SK south to NM & MI
BC: Cache Ck, Summerland, Oliver, Osoyoos
- Trochosa ruricola* (De Geer)
Global: Palaearctic; introduced to Nearctic - southwestern BC, ON, QC, and other parts of North America
BC: Vancouver area (Coquitlam, Burnaby, Boundary Bay, Iona Beach, Blaney Lk)
- Trochosa terricola* Thorell
Global: AK to NF south to CA & TX
BC: Widespread in BC

Mecicobothriidae

- Hexura picea* Simon
Global: Southwestern Vancouver Is (disjunct pop'n), WA to OR
BC: Carmanah Prov Pk, Cheewat Beach (Clo-oose), Walbran Valley, Bamfield, nr Port Renfrew (Avatar Grove, Harris Ck spruce)

Mimetidae

- Ero canionis* Chamberlin & Ivie
Global: Southern BC to NF south to UT and NC
BC: Victoria, Burnaby, Roberts Ck, Pend d'Oreille Valley, Yoho Nat Pk (nr Wapta Falls)
- * *Ero tuberculata* (De Geer)
Global: Palaearctic; introduced in Nearctic -- southwestern BC
BC: Ft Langley, Victoria area (Tillicum, Beaver Lk), Vancouver (Stanley Pk)

Mimetes hesperus Chamberlin

Global: Southern BC south to CA & TX

BC: Walhachin

Miturgidae

Cheiracanthium inclusum (Hentz)

Global: Southern interior BC to MA south to West Indies & South America

BC: Chase, Oliver, Vaseux Lk, White Lk, McIntyre Ck

Cheiracanthium mildei L Koch

Global: Palaearctic; introduced to Nearctic - southern interior BC, CA to southern ON & AL

BC: Vernon, Osoyoos

Mysmenidae

Trogloneta paradoxa Gertsch

Global: Southern Vancouver Is south to CA & UT

BC: Victoria area (Roche Cove, Goldstream Prov Pk, Durrance Lk, Beaver Lk Reg Pk)

Nesticidae

Nesticus silvestrii Fage

Global: Coastal BC south to CA

BC: Carmanah Valley (Vancouver Is), Victoria area (Veitch Ck, Matheson Lk, Sidney), Gulf Islands Nat Pk (N Acland Is, Big Red Is, N & S Hawkins Is, Big D'Arcy Is, SW Dock Is), Roberts Ck, Haida Gwaii (Deanna/Nina Rivers karst (Moresby Is), Bonanza Ck. (Graham Is))

Oonopidae

Tapinesthis inermis (Simon)

Global: Palaearctic; introduced to Nearctic - BC & MA

BC: Victoria (Haultain/King area 'hydro lands')

Oxyopidae

Oxyopes scalaris Hentz

Global: Southern BC to NS south to northern MX

BC: Widespread in southern BC

Philodromidae

Apollophanes margareta Lowrie & Gertsch

Global: Southern YT south to CA & NM

BC: Terrace, Wellington, Sidney, Roberts Ck, Fountain Valley, Cathedral Lks Prov Pk (Rim Tr), Quesnel, Summerland, Creston

* Ebo bucklei Platnick

Global: YT & south central BC to MB

BC: White Lk

Ebo evansae Sauer & Platnick

Global: Southern BC south to CA, OK, & Mexico

BC: Fraser R (across from Fountain Valley), White Lk (Oliver), Grand Forks

Ebo pepinensis Gertsch

Global: Southern BC to NS south to CA & TX

BC: Wellington

Philodromus alascensis Keyserling

Global: Holarctic; widespread in Nearctic, AK to NF south to AZ & NW

BC: Widespread in BC

Philodromus californicus Keyserling

Global: Southern BC to CO south to northern MX

BC: Summerland, Vaseux Ck, Oliver, Osoyoos

Philodromus cespitum (Walckenaer)

Global: Holarctic; in Nearctic - AK to NS south to CA & NJ

BC: Widespread in BC

Philodromus dispar Walckenaer

Global: Palaearctic, introduced to Nearctic - southwestern BC & adjacent WA

BC: Wellington, Cowichan Lk, Sansum Narrows Reg Pk (nr Genoa Bay), Langford, Victoria, Saanich, Vancouver, Burton

Philodromus histrio (Latreille)

Global: Holarctic; in Nearctic - southern BC to NS south to MX

BC: Widespread in southern interior BC

Philodromus insperatus Schick

Global: Southern BC south to CA & UT

BC: Lytton, Vernon, Summerland, Okanagan Falls, Keremeos

Philodromus josemitensis Gertsch

Global: Southwestern BC south to CA

BC: Comox, Cowichan Lk, Victoria, Gulf Islands Nat Pk (Cabbage Is)

Philodromus mysticus Dondale & Redner

Global: NU to NS south to CO & UT

BC: Whistler (Rainbow Lk Tr), Terrace, Johnson Bay (Babine Lk), nr Vanderhoof, Mt Mackenzie, Takakkaw Falls

Philodromus oneida Levi

Global: Southern BC to NS south to OR & IL

BC: Duncan, Manning Prov Pk, Lillooet, Vernon, nr Vanderhoof, Hwy 29 @ Halfway Ck

Philodromus pernix Blackwall

Global: Southern BC to NS south to AZ & PA

BC: Kamloops, Vernon, Cawston, nr Vanderhoof, Hwy 29 @ Halfway R, Bush Arm Kinbasket Lk (causeway)

Philodromus placidus Banks

Global: AK to NF south to MX & FL

BC: Liard Hotsprings, Fountain Valley, Cache Ck, Rock Ck

Philodromus praelustris Keyserling

Global: Southern BC to NS south to NV & VA

BC: Lillooet, Penticton, Elko

Philodromus rodecki Gertsch & Jellison

Global: Southern BC to MT south to CA & NM

BC: Lytton, Cache Ck, Creston

Philodromus rufus pacificus Banks

Global: Holarctic species; Nearctic subspecies - BC south to CA

BC: Widespread in BC W of Rocky Mtns

Philodromus rufus quartus Dondale & Redner

Global: Holarctic species; Nearctic subspecies - AK to NF south to MX and ON

BC: Liard R Hotsprings, Prophet R, Johnson Bay (Babine Lk), Hwy 29 NW of Ft St John

Philodromus speciosus Gertsch

Global: Southern BC to WY south to CA & CO

BC: Okanagan Falls

Philodromus spectabilis Keyserling

Global: BC to MT south to CA & NM

BC: Widespread on coastal & in southern BC

Thanatus altimontis Gertsch

Global: Southern BC to NE south to CA & OK

BC: Osoyoos, Mt Kobau, Old Hedley Rd

Thanatus arcticus Thorell

Global: AK to Greenland south to northern BC

BC: Summit Lk (Alaska Hwy)

Thanatus bungei (Kulczynski)

Global: Holarctic; in Nearctic - southwestern BC to MT south to CO

BC: Manning Prov Pk, Cathedral Lks Prov Pk (Rim Tr), Mt Revelstoke, Paget Pk (nr Field), Lakit Pk (Ft. Steele)

Thanatus coloradensis Keyserling

Global: Holarctic; in Nearctic, AK to MB south to CA & OK

BC: Terrace, nr Prince George, Kamloops, Pritchard, Osoyoos, Mission Ridge (Seton Portage)

Thanatus formicinus (Clerck)

Global: Holarctic; in Nearctic - AK to NS south to CA & VA
BC: Widespread in southern BC

Thanatus striatus C. L. Koch

Global: Holarctic; in Nearctic - AK to NS south to CA & CT
BC: Comox, Okanagan Falls, Oliver, Creston

Thanatus vulgaris Simon

Global: Holarctic; introduced to Nearctic - southern BC to MA south to MX & GA
BC: Victoria, nr Dawson Ck

Tibellus asiaticus Kulczynski

Global: Holarctic; in Nearctic - AK to ON south to UT
BC: Yale, Princeton, Cawston, Hwy 29 @ Lynx Ck

Tibellus chamberlini Gertsch

Global: Southern BC south to CA & AZ
BC: Summerland, Oliver

Tibellus maritimus (Menge)

Global: Holarctic; in Nearctic - AK to NF south to UT & NH
BC: Widespread in eastern half of BC

Tibellus oblongus (Walckenaer)

Global: Holarctic; in Nearctic - AK to NS south to MX
BC: Widespread in western & southern BC; Summit Lk, Hwy 29 @ Halfway R

Titanebo parabolis Schick

Global: Southern BC south to CA & AZ
BC: Osoyoos

Pholcidae

Pholcophora americana Banks

Global: BC & AB south to CA & NM
BC: Victoria (Mt Douglas Reg Pk), Merritt, Kamloops, Deadman Valley FSR (nr Cache Ck), Ashcroft/Spences Bridge area, Fraser R (across from Fountain Valley), Highline Rd (between D'Arcy & Seton Portage), Lillooet, Yalakom & Bridge Rivers (various localities W of Lillooet), Pavilion Lk, Marble Canyon, Salmon Arm, Chopaka, Princeton, lower Ashnola R, Hedley, Kilpoola Lk, Okanagan Falls, nr Oliver (White Lk, Haynes Lease, Inkaneep, Kennedy Flats, McIntyre Ck, Osoyoos Lk, Vaseux Lk), Penticton, Summerland, Riske Ck (Rock Lk), Farwell Canyon, Gang Ranch Bridge, N of Williams Lk, Hudson's Hope, Lynx Ck, Spences Bridge, Grand Forks, Trail, Cranbrook area (Rampart grassland, Eager Hills, lower Bull R valley, Sunken Ck Tr), Bummers Flats WA (nr Ft Steele), Marion Ck benchlands (nr Canal Flats), Findlay Ck (W of Canal Flats), Lk Koocanusa, Grasmere-Dorr FSR (nr Lk Koocanusa), Flathead-Sage FSR, Sale Mtn

Pholcus phalangioides (Fuesslin)

Global: Cosmopolitan
BC: Courtenay, Victoria, Gibson's Landing, Summerland

Psilochorus hesperus Gertsch & Ivie

Global: Southern interior BC to northern CA
BC: E of Princeton (For Rec sites @ E end of Old Hedley Rd, Bromley Rock, W of Bromley Rock, E of Hayes Ck), Hedley, lower Ashnola R valley, Osoyoos, E side Osoyoos Lk, Kilpoola Lk, E Chopaka Protected Area (2 km S of Kilpoola Lk), Haynes Lease (nr Oliver), Vaseux Lk area (McIntyre Rd bluff, Vaseux Ck, Kennedy Flats), East Side Rd (Skaha Lk), Summerland

Pimoidae

Pimoa altiocolata (Keyserling)

Global: AK south to CA and UT
BC: Widespread on Vancouver Is & adjacent mainland, Blowdown Pass (SW of Lillooet), Port Edward, Bonus Lk

Pimoa curvata Chamberlin & Ivie

Global: South central BC to north central OR
BC: Hedley

Pimoa haden Chamberlin & Ivie

Global: Southern interior BC south to northeastern ID & northwestern MT
BC: Merritt, Apex Mtn, Vaseux Lk, Summerland, Vernon, Burton, "Darkwoods" NE of Salmo (railway tunnel S of Tye Camp, nr Porcupine Lk, Wurttemberg Mtn, nr Devil's Hole Lk), Waldie Lk (Salmo), Kootenay Pass, Kimberley, Balu Pass

Pisauridae

Dolomedes triton (Walckenaer)

Global: Southeastern AK to ME south to MX & Cuba
BC: Widespread in BC

Salticidae

Chalcoscirtus alpicola (L. Koch)

Global: Holarctic; in Nearctic - AK to NL south to UT & NH
BC: Uncertain BC record

* *Chalcoscirtus carbonarius* Emerton

Global: Holarctic; in Nearctic - AK & YT to MT
BC: Lakit Peak (Ft Steele), Paget Pk (nr Field), Lk O'Hara area (Odaray/Grandview Tr, Opabin Plateau)

Dendryphantus nigromaculatus (Keyserling)

Global: BC to QC south to UT & KS
BC: Atlin, Summit Lk (Alaska Hwy), Apex Mtn, "Darkwoods" NE of Salmo (Wurttemberg Mtn), Bridle Lk (Kootenay Pass), Evening Ridge Mtn (Nelson), Mt Kobau

Eris militaris (Hentz)

Global: AK to NS south to CA & FL
BC: Widespread in BC

Euophrys monadnock Emerton

Global: BC to NS south to CA & NH
BC: Yalicum R (45 km W of Lillooet), Eager Hills (Cranbrook), Findlay Ck (W of Canal Flats)

Evarcha prozyskii Marusik & Ligonov

Global: Holarctic; in Nearctic - AK to NT south to CA & TX.
BC: Widespread in BC

Habronattus americanus (Keyserling)

Global: Southwestern BC to northern ON south to CA & MN
BC: Victoria (Island View Beach), Parksville, Portland Is, Savary Is, Thormanby Is, Vancouver area (Iona Beach, Colony Farm), Clinton, Apex Mtn, Bummers Flats WA (nr Ft Steele), Lk Koocanusa

Habronattus captiosus (Gertsch)

Global: YT to MN south to southern AB
BC: Trout R (Alaska Hwy)

Habronattus decorus (Blackwall)

Global: Southern BC to NS south to OR & FL
BC: Creston, south Okanagan Valley, Kamloops

* *Habronattus festus* (Peckham & Peckham)

Global: South central BC; southern ID to northeastern CA and AZ
BC: Hayne's Lease

Habronattus hirsutus (Peckham & Peckham)

Global: Southern BC to western MT south to northwestern MX & western TX
BC: Vancouver Is (Carmanah Valley, Mt Benson, Wellington), Savary Is, Heriot Bay, Lillooet, Vernon, Summerland, Green Mtn (Keremeos), Meyers Flats (Oliver), Osoyoos, Chopaka

Habronattus jucundus (Peckham & Peckham)

Global: Southeastern BC south to northern CA & western WY
BC: Coquihalla Lks, Clearwater, Lakit Peak (Ft Steele), Glacier Nat Pk

- Habronattus ophrys* Griswold
Global: West coastal NA from southwestern BC to northern CA
BC: Victoria area (Island View Beach, Rocky Point, Sallas Is), Haney (UBC Research Forest), Surrey, Port Alberni
- Habronattus oregonensis* (Peckham & Peckham)
Global: Southwestern BC to western MT south to CA & AZ
BC: Kyuquot, Wellington
- Habronattus sansoni* (Emerton)
Global: Southern BC south to central CA & CO
BC: Lillooet, Merrit, Kelowna, Vernon, White Lk, Vaseux Lk, Skaha Bluffs, Kilpoola Lk, Osoyoos, Mt Baldy
- * *Metacyrba taeniola similis* Banks
Global: Southern BC to northwestern MX east to western OK & TX
BC: Haynes Lease Eco Res (Osoyoos)
- Metaphidippus manni* (Peckham & Peckham)
Global: Southwestern BC to ID south to northwestern MX & AZ
BC: Mt Benson, Wellington, Savary Is, Saltspring Is, Vancouver, Haynes Lease (Osoyoos)
- Neon nelli* Peckham & Peckham
Global: BC to NF south to TX & GA
BC: Victoria area (Goldstream Prov Pk, Durrance Lk), N of Williams Lk, Hwy 29 @ Bear Flat, Hwy 29 @ Watson Slough, nr Hudson's Hope, Edgewood, Burton, Sunken Ck Tr (nr Cranbrook)
- Neon pixii* Gertsch & Ivie
Global: Southern BC south to CA & UT
BC: Mt Maxwell (Salspring Is), Highline Rd (nr Darcy), Hedley, Oliver, "The Throne" @ Haynes Lease Eco Res (Osoyoos)
- Neon reticulatus* (Blackwall)
Global: Holarctic; in Nearctic - AK south to OR & AZ
BC: Mt Hefty, Terrace, nr Prince George, Bute Inlet, Wellington, Lk Cowichan, Sansum Narrows Reg Pk (nr Genoa Bay), Victoria area (Mystic Vale, Matheson Lk, Pearson College, Witty's Lagoon, Veitch Ck, Sugarloaf Mtn, Goldstream Prov Pk, Prospect Lk, Jocelyn Hill, Sallas Is), S Hawkins Is (nr Saltspring Is), Long Hbr, Galiano Is, Tree Is (nr Chemainus), Gulf Islands Nat Pk (Acland Is, Bright Is, Cabbage Is), Nanaimo (Yellow Point), Whistler (Brandywine Prov Pk)
- Pelegrina aeneola* (Curtis)
Global: Northwestern BC to southern AB south to northwestern MX & NM
BC: Masset, Alice Lk Prov Pk, Wellington, Qualicum, Victoria, Mt Braden (nr Victoria), Whistler (Brandywine Prov Pk), Spences Bridge, Summerland, Osoyoos, Creston, Waldie Lk (Salmo), Furry Ck
- * *Pelegrina balia* Maddison
Global: South central BC south to CA & AZ
BC: Field's Lease (Osoyoos), Ross Lake (Okanagan Falls)
- Pelegrina clemata* (Levi)
Global: Southeastern BC to SK south to CA & NM
BC: Osoyoos (Haynes Lease, Field's Lease), Bull R (49.5N 115.5W), Cranbrook
- Pelegrina flavipes* (Peckham & Peckham)
Global: NU to NF south to NM & NC
BC: Wells Gray Prov Pk, Columbia Lk, Boya Lk, Salmon Arm, Kettle R, Arrow Lks, Christina Lk, Yoho Nat Pk (Boulder Ck, Field)
- Pelegrina helenae* (Banks)
Global: Southern interior BC to WY south to southern CA & UT
BC: Monte Ck
- Pelegrina montana* (Emerton)
Global: AK to NF south to NM & VA
BC: Pink Mtn, Little Prairie, Prophet R (57.68N 122.47W), Tetsa R, Hwy 29 @ Watson Slough, Kootenay Nat Pk (Daer-Pitts), Johnson Bay (Babine Lk), Summerland, Osoyoos
- Pelegrina proterva* (Walckenaer)
Global: Southern BC to NS south to eastern TX & FL
BC: Salmon Arm, Enderby, Vernon, Summerland, Haynes Lease (Osoyoos), Creston, Emerald Lk
- Pellenes ignifrons* (Grube)
Global: Holarctic; in Nearctic - YT & BC to ON south to MT
BC: Copper R (Terrace), Victoria area (Veitch Ck, Sugarloaf Mtn, Victoria), "Darkwoods" NE of Salmo (nr Porcupine Lk), Waldie Lk (Salmo), Evening Ridge Mtn (Nelson), Glacier Nat Pk, Yoho Nat Pk (Paget Peak)
- Pellenes lapponicus* (Sundevall)
Global: Holarctic; in Nearctic - BC to NS south to CO & ME
BC: Apex Mtn, nr Prince George
- Pellenes shoshonensis* Gertsch
Global: Southern BC to ID & WY
BC: Osoyoos
- Phanias albeolus* (Chamberlin & Ivie)
Global: Southwestern BC to west central CA
BC: Comox, Victoria area (E Sooke, Rocky Point, Witty's Lagoon, Beaver Lk, Oak Bay, Sidney), Saturna Is (Narvaez Bay, Warburton Pike)
- * *Phanias concoloratus* (Chamberlin & Gertsch)
Global: Southern BC to CA; primarily coastal
BC: Summerland, Haynes Lease (Osoyoos)
- Phidippus borealis* Banks
Global: AK to QC south to CO & MA
BC: Cathedral Lks Prov Pk (Rim Tr), Terrace, Tetsa R, Ft Nelson, Hwy 29 @ Watson Slough, Hwy 52 SW of Dawson Ck
- Phidippus johnsoni* (Peckham & Peckham)
Global: NU to SK south to northwestern MX & CO
BC: Haida Gwaii (Queen Charlotte Islands), widespread in southern BC
- Phidippus purpuratus* Keyserling
Global: BC to NS south to WY & FL
BC: Nation Mtns, Vernon, Vaseux Lk, Osoyoos, Creston, Rampart grassland (E of Cranbrook), Bummars Flats WA (nr Ft Steele), Findlay Ck (W of Canal Flats), Grasmere-Dorr FSR (nr Lk Koocanusa)
- Phidippus tyrrelli* (Peckham & Peckham)
Global: High elevation from eastern BC to northern MX
BC: "Canadian Rocky Mountains"
- Platycryptus californicus* (Peckham & Peckham)
Global: Southern BC & western MT south to Costa Rica & Galapagos
BC: Widespread in southern BC
- Salticus scenicus* (Clerck)
Global: Palaearctic; introduced to Nearctic - widespread
BC: Widespread in southern BC
- Sassacus papenhoei* Peckham & Peckham
Global: Southern BC south to CA & TN
BC: Ashcroft, Spences Bridge, Walhachin, Summerland, Haynes Lease (Osoyoos)
- Sassacus vitis* (Cockerell)
Global: Southern BC to AB south to MX
BC: Carmanah Valley, Summerland, Osoyoos, Haynes Lease (Osoyoos)
- * *Sitticus ammophilus* (Thorell)
Global: Eastern Palaearctic; introduced to ON, MB, BC, & UT
BC: Kelowna
- Sitticus dorsatus* (Banks)
Global: Western Nearctic (southern BC to CA & TX)
BC: Summerland, Vaseux Lk
- Sitticus fasciger* (Simon)
Global: Palaearctic; introduced to Nearctic - BC to QC south to WI &

- NJ
BC: Johnson Bay (Babine Lk)
- Sitticus finschi* (L. Koch)
Global: Holarctic; in Nearctic - AK to NF south to WY & MN
BC: Cathedral Lks Prov Pk (Rim Tr), Salmon Arm, Terrace, Johnson Bay (Babine Lk), Ripple Ridge (Kootenay Pass), Creston
- Sitticus floricola palustris* (Peckham & Peckham)
Global: BC to New England south to CA
BC: Goldstream Prov Pk, Yoho Nat Pk, Hwy 29 @ Watson Slough
- Sitticus ranieri* (Peckham & Peckham)
Global: Holarctic; in Nearctic - AK to NF south to OR & CO
BC: White Pass, Summit Lk (Alaska Hwy), Kootenay Pass (Cornice Ridge, Ripple Ridge, Bridal Lk), "Darkwoods" NE of Salmo (Swamp Basin Rd), Evening Ridge Mtn (Nelson), Yoho Nat Pk, Glacier Nat Pk, Whitetooth Ridge (nr Golden), Yoho Nat Pk (Lk McArthur Tr, Odaray/Grandview Tr), Kootenay Nat Pk (Stanley Glacier Tr), Mission Ridge (Seton Portage), Whistler (Whistler Peak, Beverley Lk)
- Synageles canadensis* Cutler
Global: BC to NS south to MI
BC: Prince George
- Synageles leechi* Cutler
Global: BC
BC: Oliver
- Synageles occidentalis* Cutler
Global: Southern interior BC to MB south to CA & MI
BC: Christina Lk
- Talavera minuta* (Banks)
Global: Holarctic; in Nearctic - YT to NS south to CA & NY
BC: Gulf Islands Nat Pk (Cabbage Is), Sallas Is (nr Sidney Is), Richmond (Boundary Bay), Apex Mtn, nr Prince George
- Terralonus californicus* (Peckham & Peckham)
Global: Southwestern BC to southern CA
BC: Kyuquot, Victoria
- Tutelina similis* (Banks)
Global: BC to QC south to CA & FL(?)
BC: Victoria, Vernon, Hwy 29 NW of Ft St John

Segestriidae

- Segestria pacifica* Banks
Global: West coastal NA from southwestern BC south at least to southern CA
BC: Kyuquot, Departure Bay (Nanaimo), Victoria, Spences Bridge

Telemidae

- Usofila pacifica* (Banks)
Global: Southern AK to OR(?)
BC: Bramham Is, Bute Inlet, Burnaby, Vancouver (Stanley Pk), Kyuquot, Avatar Grove (Pt Renfrew), Tree Is (nr Chemainus), Mt Arrowsmith, Victoria area (Ayum Ck, Monument Ridge, Veitch Ck, Mt Braden, Matheson Lk, Pearson College, Witty's Lagoon, Goldstream Prov Pk, nr Prospect Lk, Observatory Hill, Beaver Lk Reg Pk, Victoria), N Hawkins Is (nr Saltspring Is), Long Hbr, Saturna Is (nr Money Lk), Denman Is, Galiano Is, Gulf Islands Nat Pk (Big D'Arcy Is, Tumbo Is), Koksilah, Yellow Point, Roberts Ck, Black Tusk microwave, Blowdown Pass (SW of Lillooet), Anarchist Mtn, Cathedral Lks Prov Pk (Rim Tr), Summerland, Deadman Valley FSR (nr Cache Ck), Kamloops, nr Cinema, Idaho Pk (nr New Denver), Evening Ridge Mtn (nr Nelson), Gray Ck Pass (Crawford Bay), "Darkwoods" NE of Salmo (lower Laib Rd, nr Porcupine Lk, Wurttemberg Mtn, nr Devil's Hole Lk, Swamp Basin Rd), Mt Fidelity, Yoho Nat Pk (Yoho Valley Rd, Lk McArthur Tr, Opabin Plateau, Whitetooth Ridge (nr Golden), Graves Lookout Tr (E of Whiteswan Lk), Lakit Peak (Ft Steele), White R. (nr junct of N & E

- White R FSRs), Haida Gwaii (Kiusta, Tow Hill (Graham Is), Deanna/Nina Cks karst (Moresby Is)), Mosquito Ck (nr Nakusp), Edgewood, Kootenay Pass

Tetragnathidae

- Metellina curtisi* (McCook)
Global: Southeastern AK to CA; isolated records from Great Lakes area
BC: Widespread on coastal BC
- Metellina mimetoides* Chamberlin & Ivie
Global: Southeastern AK to MT south to CA & TX
BC: Victoria, Mt Braden (nr Victoria), Vernon
- Metellina segmentata* (Clerck)
Global: Palaearctic; introduced to Nearctic - southwestern BC
BC: Victoria, Vancouver, Stanley Pk (Vancouver)
- Pachygnatha clercki* Sundevall
Global: Holarctic; in Nearctic - AK to northern ON south to BC & VA
BC: Springhouse
- Pachygnatha dorothea* McCook
Global: Southwestern BC to MA south to NM & NY
BC: Victoria
- Tetragnatha caudata* Emerton
Global: Southern BC to PEI south to Central America & Cuba
BC: Victoria, Port Alberni, Chilcotin, Creston, Windermere
- Tetragnatha dearmata* Thorell
Global: NT to PEI south to ID & OK
BC: Summit Lk (Alaska Hwy), Evening Ridge Mtn (Nelson)
- Tetragnatha elongata* Walckenaer
Global: Southwestern BC to NF south to MX & West Indies
BC: Wellington, Salmon Arm
- Tetragnatha extensa* (Linnaeus)
Global: Holarctic; in Nearctic - AK to Greenland south to CO & PA
BC: Widespread in BC
- Tetragnatha laboriosa* Hentz
Global: AK to NF south to Panama & FL
BC: Widespread in BC
- Tetragnatha shoshone* Levi
Global: Holarctic; in Nearctic - NT to ON south to northern CA & IL
BC: Victoria
- Tetragnatha versicolor* Walckenaer
Global: AK to NF south to Nicaragua & Cuba
BC: Widespread in BC

Theridiidae

- Asagena americana* Emerton
Global: Southern BC to ME south to Panama & West Indies; China
BC: Victoria, Vernon, Skaha Lk, Riske Ck
- Canalidion montanum* (Emerton)
Global: Southeastern AK to NF south to NM & VA
BC: Atlin, Hwy 37 @ Needlepoint Mtn, Kinaskan Lk, Tanglechain Lk, Copper R valley (nr Terrace), Terrace, Nitinat, Whistler (Madeley Lk), Manning Prov Pk, Kettle R, Monashee Mtns, Yoho Nat Pk (Paget Pk)
- * *Chrysso nordica* (Chamberlin & Ivie)
Global: Holarctic; in Nearctic - AK to NT & SK south to CA & CO
BC: Hwy 29 NW of Ft St John
- Crustulina sticta* (O. P.-Cambridge)
Global: Holarctic; in Nearctic - AK to NF south to CA & south TX (probably introduced to Palaearctic)
BC: Widespread in BC
- Cryptachaea blattea* (Urquhart)
Global: Cosmopolitan
BC: Victoria (Saxe Pt, 10 Mile Pt, Glanford Ave)

- Cryptachaea canionis* (Chamberlin & Gertsch)
Global: Southeastern BC south to CA & UT
BC: Highline Rd (nr Darcy), Bridge R below Trehorne Dam, Max/Madeline Lk (Penticton), Kilpoola Lk, Nelson (above Grohman Narrows)
- Dipoena malkini* Levi
Global: Southwestern BC south to CA & NM
BC: Mt Cain (N Vancouver Is), Sansum Narrows Reg Pk (nr Genoa Bay)
- Dipoena nigra* (Emerton)
Global: Southern BC to QC south to CA & FL
BC: Widespread in S BC
- Dipoena provalis* Levi
Global: Southeastern BC to northeastern OR and northern UT
BC: Marion Ck benchlands (W of Canal Flats), Sunken Ck Tr (nr Cranbrook), Hwy 29 NE of Hudson's Hope
- Dipoena washougalia* Levi
Global: Southwestern BC & adjacent WA
BC: Victoria area (Pearson College, Francis King Reg Pk, Beaver Lk Reg Pk, Goldstream Prov Pk), Gulf Islands Nat Pk (Big Channel Is, Big Red Is, Brackman Is, Bright Is, Cabbage Is, N. Hawkins Is, Tumbo Is), nr Prevost Is (Glenthorne Is, N & S Acland Is), Sansum Narrows Reg Pk (nr Genoa Bay), Tree Is (nr Chemainus), Burns Bog (Ladner/Delta), Yellow Point
- Enoplognatha intrepida* (Sorensen)
Global: Southern AK to Greenland south to AZ & CT
BC: Mt Arrowsmith, Whistler Peak, Black Tusk microwave, Blowdown Pass (SW of Lillooet), km 15 Highline Rd (N of Darcy), Mission Ridge (Seton Portage), Apex Mtn, Beaconsfield Mtn (Penticton), nr Vanderhoof, Whitetooth Ridge (nr Golden), Lk O'Hara area (Odaray/Grandview Tr, Lk McArthur Tr), Stanley Glacier Tr (Kootenay Nat Pk), Bummers Flats WA (nr Ft Steele), nr Cranbrook (Ramparts grassland, Sunken Ck Tr), Marion Ck benchlands (W of Canal Flats), Mt Hefty
- Enoplognatha joshua* Chamberlin & Ivie
Global: Southern BC and SK south to CA & AZ; also VA & GA
BC: Savary Is, old Pokhaist Village dump (S of Ashcroft), nr Chopaka border crossing
- Enoplognatha latimana* Hippa & Oksala
Global: Palaearctic; introduced to Nearctic - southern BC to QC south to LA & FL
BC: Terrace, Victoria area (Rocky Point, Victoria), Peachland, 10 km S of Donald
- Enoplognatha marmorata* (Hentz)
Global: Southern BC to NS south to CA & FL
BC: Nanaimo (Departure Bay), Canim Lk, Salmon Arm, Summerland, Apex Mtn, White Lk, Osoyoos (Mt Kobau)
- Enoplognatha ovata* (Clerck)
Global: Palaearctic; introduced to Nearctic - west & east coasts of NA, southern BC to northern CA, QC to ME south to NY
BC: Widespread in southern BC
- Enoplognatha thoracica* (Hahn)
Global: Palaearctic; introduced to Nearctic - southwestern BC to OR, also QC
BC: Victoria area (Victoria, Beacon Hill, Saxe Pt, Island View Beach, Sallas Is), Gulf Islands Nat Pk (Big D'Arcy Is, Bright Is), Richmond (Iona Beach), Roberts Ck
- Enoplognatha wyuta* Chamberlin & Ivie
Global: Southern interior BC to SD south to UT
BC: Highline Rd (nr Darcy), Princeton, Old Hedley Rd, Kilpoola Lk, Peachland, Lk Koocanusa, Eager Hills (Cranbrook), Findlay Ck (W of Canal Flats), Columbia Lk Prov Pk
- Euryopis argentea* Emerton
Global: Holarctic (Kamchatka); in Nearctic - s BC, ON, & QC, n USA south to OR & VA
BC: Edgewood, Mosquito Ck (SW of Nakusp), nr Valemount (Dave Henry Ck)
- Euryopis formosa* Banks
Global: Southern BC to western WY south to CA
BC: Langford, Lillooet, Bridge/Yalakom R area, Whistler (Brandywine Prov Pk), Vernon, Apex Mtn (nr Keremeos), Old Hedley Rd, Kaslo, Kootenay Lk
- Euryopis funebris* (Hentz)
Global: Southern BC to QC south to LA & FL
BC: Peachland
- Euryopis scriptipes* Banks
Global: Southern BC to AB south to north central MX
BC: Vernon, Edgewood, Castle Mtn (Christina Lk)
- * *Lasaeola prona* (Menge)
Global: Holarctic; in Nearctic - BC, SK, QC, & NS to CA & NC (widespread but rare)
BC: Cabin Ck FSR (Flathead R drainage)
- Latrodectus hesperus* Chamberlin & Ivie
Global: Southern BC to SK south to northern MX
BC: Widespread in SW and S central BC
- Neottiura bimaculata* (Linnaeus)
Global: Palaearctic; introduced to Nearctic - BC to QC south to ?
BC: Widespread in BC, particularly in S half
- Ohlertidion ohlerti* (Thorell)
Global: Holarctic; in Nearctic - AK to QC south to central CA & NM
BC: Summit Lk (Alaska Hwy), Hyland R, Vancouver, Manning Prov Pk, Coquihalla Lks, Lillooet, Field, Graves Lookout Tr (E of Whiteswan Lk), Lakit Peak (Ft Steele)
- Parasteatoda tepidariorum* (C. L. Koch)
Global: Cosmopolitan
BC: Brentwood Bay, Victoria, Vancouver, Kelowna, Osoyoos, "Darkwoods" NE of Salmo (Tye Camp)
- Phylloneta impressa* (L. Koch)
Global: Holarctic; in Nearctic - AK to NU south to northern BC & AB
BC: Atlin, Mt St Paul, Summit Lk (Alaska Hwy), Hwy 29 @ Halfway R, Ft Nelson, Lemoray, Sparwood, Field (shoreline)
- Platnickina tinctoria* (Walckenaer)
Global: Palaearctic; introduced to Nearctic - southwestern BC, adjacent WA & northern OR
BC: Victoria, Gulf Islands Nat Pk (Big D'Arcy Is), Vancouver, Stanley Pk (Vancouver), Agassiz
- Robertus borealis* (Kaston)
Global: BC to ME south to MI & NY
BC: Falkland
- Robertus fuscus* (Emerton)
Global: Northern BC to LB south to WY & CT
BC: Babine Lk (Johnson Bay), Pinkut Ck, Alaska Hwy (Mi 419, Racing R), nr Prince George, Bull R valley (NW of Elkford), Yoho Nat Pk (jct Yoho & Kicking Horse Rivers)
- Robertus lividus* (Blackwall)
Global: Holarctic; in Nearctic - introduced? AK & BC
BC: Coquitlam (Colony Farm)
- Robertus vigerens* (Chamberlin & Ivie)
Global: AK to MT south to CA & UT
BC: Widespread in BC
- Romphaea fictilium* (Hentz)
Global: BC, MB to NS, south to Argentina
BC: Qualicum Beach, Nanaimo, Wellington, Pender Hbr

- Rugathodes aurantius* (Emerton)
Global: AK to NF south to WY & NH
BC: Liard R Hotsprings, nr Hudson's Hope, Hwy 29 @ Szoo Rd, Hwy 29 @ Halfway Ck, Hwy 97 S of Taylor, Yoho Nat Pk (Boulder Ck Ranger Sta), Terrace, Victoria
- Rugathodes sexpunctatus* (Emerton)
Global: Southern AK to NF south to CA & NC
BC: Widespread in BC
- Simitidion simile* (C. L. Koch)
Global: Palaearctic; introduced to Nearctic - southwestern BC & adjacent WA
BC: Comox, Goldstream Prov Pk, Vancouver
- Steatoda albomaculata* (De Geer)
Global: Holarctic; in Nearctic - NT to NH south to central MX & IL
BC: Widespread in BC
- Steatoda bipunctata* (Linnaeus)
Global: Palaearctic; introduced to Nearctic - northeastern North America and southwestern BC, northwestern WA
BC: Surrey
- Steatoda borealis* (Hentz)
Global: AK to NS south to TX & GA
BC: Meziadin Lk, Johnson Bay (Babine Lk), Prince George, Hudson's Hope, Lynx Ck, Hwy 29 @ Lynx Ck, Hwy 29 @ Watson Slough, Ft St John, Kamloops, Salmon Arm, Vernon, Victoria
- Steatoda grossa* (C. L. Koch)
Global: Cosmopolitan
BC: Widespread in BC
- Steatoda hespera* Chamberlin & Ivie
Global: BC to MT south to CA & CO
BC: Prince George, km 15 Highline Rd (n of Darcy), Marble Canyon, Manning Prov Pk, Nicola, Kamloops, Salmon Arm, Vernon, Summerland, Penticton, Mt Kobau, Kootenay Lk, Granite Mtn (Rossland), Kootenay Pass (Bridle Lk, Ripple Ridge), Creston, Goatfell (E of Creston), Erickson, Beaver Valley (Glacier Nat Pk), Bummers Flats WA (nr Ft Steele), Sunken Ck Tr (nr Cranbrook), Bull R valley (E of Cranbrook), Fernie, Flathead R valley (Kishinena Ck, Flathead Sage FSR, Beryl Ck)
- * *Steatoda washona* Gertsch
Global: S BC to NW MX & AZ
BC: Thompson R ravine below Logan Lk, Throne Eco Res (Osoyoos)
- Theridion agrifoliae* Levi
Global: West coastal NA from Vancouver Is to central CA
BC: Brooks Peninsula, Tofino, Wellington
- Theridion californicum* Banks
Global: West coastal NA from southwestern BC to southern CA
BC: Tofino, Wellington, Parksville, Sidney, Savary Is, Vancouver
- Theridion differens* Emerton
Global: BC to NS south to central CA & FL
BC: Widespread in BC
- Theridion frondeum* Hentz
Global: Southern BC to NS south to CA & LA
BC: Salmon Arm, nr Valemount (Dave Henry Ck)
- Theridion hemerobium* Simon
Global: Holarctic; in Nearctic - southern interior BC to MA south to CA & NJ
BC: Goldstream Prov Pk, Creston
- Theridion lawrencei* Gertsch & Archer
Global: Southwestern BC to ID south to southern CA
BC: Victoria area (Rocky Point), Yellow Point
- Theridion leechi* Gertsch & Archer
Global: Southern BC south to CA & CO
BC: Salmon Arm, Vernon, Trinity Valley (nr Lumby), Kaslo, Ainsworth Hotsprings
- Theridion melanurum* Hahn
Global: Holarctic; in Nearctic - southwestern BC south to CA & UT
BC: Kyuquot, Wellington, Victoria
- Theridion murarium* Emerton
Global: Southern BC to NS south to southern MX & FL
BC: Masset, Terrace, Wellington, Salmon Arm, Kamloops, Kaslo, Revelstoke
- Theridion neomexicanum* Banks
Global: Southern BC to MT south to CA & NM
BC: Widespread in S BC
- Theridion petraeum* L. Koch
Global: Holarctic; in Nearctic - southern interior BC to ME south to central CA & CO
BC: Coquihalla Lks, Cache Ck, Kamloops, Summerland, Haynes Point (Osoyoos), Eager Hills (Cranbrook), Evening Ridge Mtn (Nelson), Hwy 29 NE of Hudsons Hope, Hwy 29 NW of Ft St John, Hwy 52 SW of Dawson Ck
- Theridion pictum* (Walckenaer)
Global: Holarctic; in Nearctic - NU to NS south to UT & CT
BC: Ft Fraser, Jackfish Ck
- Theridion rabuni* Chamberlin & Ivie
Global: Southern interior BC to NJ south to CA & Bahamas
BC: Kilpoola Lk, Mt Kobau, Osoyoos (Desert Centre, Black Sage Rd, nr Mud Lk, others), Oliver (Manuel Flats), Cabin Ck FSR (Flathead R valley)
- Theridion saanichum* Chamberlin & Ivie
Global: West coastal NA from southeastern AK to CA
BC: Alert Bay, Wellington, Victoria area (Sidney, Saanich Inlet, Witty's Lagoon, Metchosin Lagoon), Vancouver
- Theridion varians* Hahn
Global: Holarctic; introduced to Nearctic - southwestern BC & adjacent WA
BC: Mesachie Lk, Victoria, Saanichton, Vancouver, Pitt Meadows, Haney, Lakelse Lk, 10 Mile Lk (Quesnel)
- Theridula emertoni* Levi
Global: BC to NF south to WI & TN
BC: Prince George, Lumby, Kaslo, Burton, Upper Shuswap River Eco Res
- Thymoites camano* (Levi)
Global: Southwestern BC south to CA & UT
BC: Victoria area (Francis King Reg Pk, Durrance Lk, Sugarloaf Mtn, Veitch Ck, E Sooke), Gulf Islands Nat Pk (Cabbage Is), Glenthorne Is (nr Prevost Is), Saturna Is, Nanaimo, Whistler (Brandywine Prov Pk), Waldie Lk (Salmo), nr St. Mary Lk (W of Kimberley), Cabin Ck FSR (Flathead R drainage)
- Thymoites minnesota* Levi
Global: BC to QC south to MN & MI
BC: Yoho Nat Pk
- Thymoites oleatus* (L. Koch)
Global: Holarctic; in Nearctic - YT & BC to NL
BC: Yoho Nat Pk (above Ross Lk), Lk O'Hara area (Lk McArthur Tr)

Thomisidae

- Bassaniana utahensis* (Gertsch)
Global: AK to NS south to MX & FL
BC: Widespread in BC
- Coriarachne brunneipes* Banks
Global: Southeastern AK to northern ON south to CA & AZ
BC: Haida Gwaii, Terrace, Nanoose Bay, Errington, Wellington, Victoria area (Langford, William Head, Victoria)

- Mecaphesa asperata* (Hentz)
Global: Southern BC to MA south to NM & FL
BC: Lillooet, Vernon, Kelowna, Summerland, Vaseux Lk, Oliver, Hudson's Hope
- Mecaphesa celer* (Hentz)
Global: Southern BC to MA south to Central America & FL
BC: Cowichan Lk, Victoria, Fairview, Vernon, Vaseux Lk, Oliver, Osoyoos
- Mecaphesa sierrensis* (Schick)
Global: Southern BC to CA
BC: Errington, Hope, Osoyoos, Creston
- Misumena vatia* (Clerck)
Global: Holarctic; in Nearctic - AK to NF south to MX & FL
BC: Widespread in BC
- Ozyptila arctica* Kulczynski
Global: Holarctic; in Nearctic, AK to NU south to northern BC
BC: Summit Lk (Alaska Hwy)
- Ozyptila conspurcata* Thorell
Global: Southwestern BC to QC south to CA & NM
BC: Mt Maxwell (Saltspring Is), Sansum Narrows Reg Pk (nr Genoa Bay), nr Prospect Lk (Victoria), Bromley Rock (nr Princeton), Old Hedley Rd, nr St Mary Lk (W of Kimberley), Sage Ck (Flathead R valley)
- Ozyptila pacifica* (Banks)
Global: Coastal BC to OR
BC: Masset, Metlakatla, Terrace, Brooks Peninsula, Yellow Point, Errington, Saltspring Is, Long Hbr, Gulf Islands Nat Pk (Cabbage Is, Tumbo Is), Roberts Ck, Mission
- Ozyptila praticola* (C. L. Koch)
Global: Palaearctic; introduced to Nearctic - southern ON & QC, southwestern BC
BC: Vancouver area (Coquitlam, Iona Beach, Reiffel Bird Sanctuary, Richmond Nature Centre, Surrey)
- Ozyptila sincera* Kulczynski
Global: Holarctic; in Nearctic - AK to ON, south to CO and VA
BC: Edgewood, Burton, Mosquito Ck (Nakusp), Bull R valley (NW of Elkford)
- Tmarus angulatus* (Walckenaer)
Global: Southern BC to NS south to CA & FL
BC: Quesnel
- Xysticus benefactor* Keyserling
Global: Southern BC & AB south to CA & NM
BC: Widespread across S BC
- Xysticus californicus* Keyserling
Global: Southwestern BC to northwestern MX
BC: uncertain record
- Xysticus canadensis* Gertsch
Global: YT to NB south to BC & NH
BC: Tanglechain Lk, Babine Lk (Takla Landing, Johnson Bay), Flathead Sage FSR, nr Chopaka border crossing
- Xysticus cristatus* (Clerck)
Global: Palaearctic; introduced in Nearctic - southwestern BC
BC: Victoria area (Sooke, Rocky Point, Goldstream Prov Pk, Island View Beach, Beacon Hill, Christmas Hill), southern Gulf Islands, Vancouver area (Iona Beach, Burnaby, Coquitlam)
- Xysticus cunctator* Thorell
Global: Southern BC to SK south to AZ
BC: Widespread in southern BC
- Xysticus discursans* Keyserling
Global: Southern BC to NF south to northwestern MX & FL
BC: Kamloops, Hedley, Cawston, Okanagan Falls, Edgewood, Yoho Nat Pk
- Xysticus durus* (Sorensen)
Global: NT to Greenland south to northern BC & northern QC
BC: Summit Lk (Alaska Hwy), Lk O'Hara area (Odaray/Grandview Tr)
- Xysticus elegans* Keyserling
Global: Southern BC to NF south to NM & GA
BC: Kispiox Valley, Seton Ck, Fountain Valley, Salmon Arm, Edgewood, Mosquito Ck (SW of Nakusp)
- Xysticus ellipticus* Turnbull, Dondale, & Redner
Global: NT to NB south to CO & TX
BC: Enderby, nr Prince George, Burton
- Xysticus emertoni* Keyserling
Global: AK to NF south to NM & TX
BC: Summit Lk (Alaska Hwy), Hudson's Hope, Liard R Hot Springs, Tumbler Ridge, Pouce Coupe, nr Prince George, Okanagan Falls, Sparwood
- Xysticus ferox* (Hentz)
Global: AK to NS south to TX & GA
BC: Summit Lk (Alaska Hwy), Wells Gray Prov Pk, Salmon Arm, E Arrow, Mosquito Ck (nr Nakusp), Edgewood, Burton, Sparwood, Langford
- Xysticus gertschi* Schick
Global: Southern BC & AB south to CA & NM
BC: Departure Bay, Spences Bridge, Cache Ck, Lytton, Kamloops, Keremeos, Cawston
- Xysticus gosiutus* Gertsch
Global: Southwestern BC south to CA & UT
BC: Wellington, Departure Bay, Langford
- Xysticus gulosus* Keyserling
Global: Southern BC to QC south to northern MX & GA
BC: Widespread in S BC
- Xysticus keyserlingi* Bryant
Global: YT to MB south to NM & NH
BC: Mt St Paul
- Xysticus locuples* Keyserling
Global: Southern BC & CO south to northern MX
BC: Widespread in S BC
- Xysticus luctuosus* (Blackwall)
Global: Holarctic; in Nearctic - NT to NB south to UT & WI
BC: Widespread in BC
- Xysticus montanensis* Keyserling
Global: AK to northern ON south to CA & NM
BC: Widespread in SW BC, nr Prince George, Mosquito Ck (Nakusp), Edgewood, Mt Revelstoke
- Xysticus nigromaculatus* Keyserling
Global: Southern BC to MB south to NM
BC: Cathedral Lks Prov Pk (Rim Tr)
- Xysticus obscurus* Collett
Global: Holarctic; in Nearctic - NT to LB south to northern BC & NH
BC: along Alaska Hwy (Summit Lk, Sikanni Chief R, Liard R Hot Springs)
- Xysticus pretiosus* Gertsch
Global: Southern BC to CA
BC: Terrace, Burton, Beaton, Mosquito Ck, widespread in SW BC
- Xysticus punctatus* Keyserling
Global: BC to NS south to CA & NC
BC: Widespread in BC
- Xysticus rugosus* Buckle & Redner
Global: Southwestern BC to southeastern AB
BC: "Rocky Mountains"
- Xysticus triangulosus* Emerton
Global: AK to LB south to CO & eastern ON
BC: Widespread in BC

Xysticus triguttatus Keyserling

Global: Eastern BC to NF south to CO & FL

BC: Summit Lk (Alaska Hwy), Field

Titanoecidae

Titanoeca nigrella (Chamberlin)

Global: Southern interior BC to AB south to northern MX & LA

BC: Bridge/Yalakom R area, Fraser R (across from Fountain Valley), Thompson R ravine below Logan Lk, Princeton, lower Ashnola R, S of Kilpoola Lk, Summerland, McIntyre Rd bluffs (Vaseux Lk), Osoyoos, Clinton, Vaseux Lk., Vernon, Rattlesnake Point (nr Vernon), Keremeos, Mahoney Lk. (nr Okanagan Falls), White Lk (nr Oliver), Kootenay Pass, "Darkwoods" NE of Salmo (Wurttemberg Mtn), Lk Koochanusa, Cranbrook area (Eager Hills, Lakit Peak, nr St Mary Lk), Findlay Ck (W of Canal Flats), Kishinena FSR (Flathead R valley)

Titanoeca nivalis Simon

Global: Holarctic; in Nearctic - AK to northern AB south to CA & NM

BC: Victoria (Observatory Hill), Masset, Oliver, Summerland, Hwy 29 NW of Ft St John, Hwy 52 SW of Dawson Creek, Peace R Bridge, Alcan Hwy, Mile 392 Alaska Hwy, Summit Lk, Graves Lookout Tr (E of Whiteswan Lk), Paget Pk (nr Field), Rampart Grassland (nr Cranbrook), Flathead Sage FSR (Flathead R valley)

Uloboridae

Hyptiotes gertschi Chamberlin & Ivie

Global: Southeastern AK to NF south to CA & PA

BC: Widespread in W & S BC

* *Uloborus glomosus* (Walckenaer)

Global: BC; widespread in eastern Nearctic

BC: Allendale Rd (S of Okanagan Falls), McIntyre Rd bluffs (Vaseux Lk)

Zodariidae

Zodarion rubidum Simon

Global: Palaearctic; introduced to Nearctic - QC, PA, CO, CA

BC: Coquitlam (Colony Farm)

Zoridae

Zora hespera Corey & Mott

Global: Southern BC to CA & NM

BC: Koksilah R, Mesachie Lk, Victoria area (Highlands, Goldstream Prov Pk, Martindale Flats), Mt Maxwell (Saltspring Is), Sansum Narrows Reg Pk (nr Genoa Bay), Osoyoos